

MA4EXP190H1-1277T



Silicon Double Balanced HMIC Mixer
1700 - 2200 MHz

M/A-COM Products
Rev. V3

Features

- + 33 dBm Typical Input IP3
- 8.3 dB Typical Conversion Loss
- + 17 to + 19 dBm LO Drive
- Fully Balanced Passive Mixer
- NO External Matching Required
- Low Cost Miniature Plastic MLP Package
- RoHS* Compliant with 260 °C. Reflow Capability
- 100% MATTE Tin Plating

Description and Applications

M/A-COM's MA4EXP190H1-1277T is a silicon monolithic 1700-2200 MHz, high barrier, double balanced mixer in a low cost, miniature surface mount FQFP-N 3mm Square, 16 lead plastic package. The die uses M/A-COM's unique HMIC silicon/glass process to realize low loss passive elements while retaining the advantages of high barrier silicon schottky barrier diodes to produce a compact device.

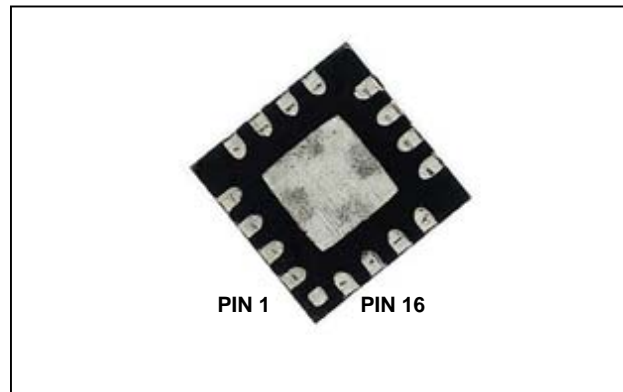
These mixers are well suited for GSM, DCS, PCS, CDMA and UMTS base station applications where small size and high performance are required. Typical applications include frequency conversion, modulation, and demodulation in wireless receivers and transmitters.

Absolute Maximum Ratings ^{1,2}

Parameter	Maximum Ratings
Operating Temperature	-40 °C to +85 °C
Storage Temperature	-65 °C to +150 °C
Incident LO Power	+20 dBm C.W.
Incident RF Power	+20 dBm C.W.
Soldering Temperature	+260 °C

1. Exceeding these limits may cause permanent damage.
2. Please refer to application note M538 for surface mounting instructions.

MLP 3mm Package (Circuit Side View)



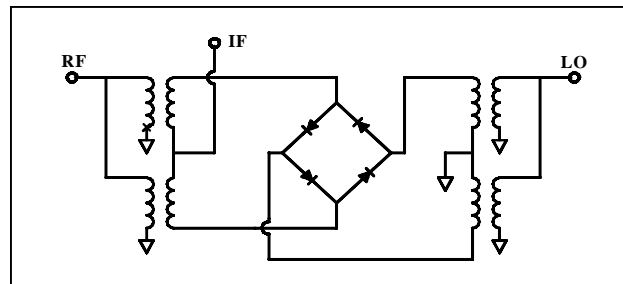
PIN Configuration

PIN	Function	PIN	Function
1	N/C	9	N/C
2	N/C	10	RF
3	LO	11	N/C
4	N/C	12	N/C
5	N/C	13	N/C
6	N/C	14	IF
7	N/C	15	N/C
8	N/C	16	N/C

Ordering Information

Part Number	Package
MA4EXP190H1-1277T	Tape and Reel
MAMX-090190-000SMB	Sample Test Board

Mixer Schematic



* Restrictions on Hazardous Substances, European Union Directive 2002/95/EC.

ADVANCED: Data Sheets contain information regarding a product M/A-COM is considering for development. Performance is based on target specifications, simulated results, and/or prototype measurements. Commitment to develop is not guaranteed.

PRELIMINARY: Data Sheets contain information regarding a product M/A-COM has under development. Performance is based on engineering tests. Specifications are typical. Mechanical outline has been fixed. Engineering samples and/or test data may be available. Commitment to produce in volume is not guaranteed.

• **North America** Tel: 800.366.2266 • **Europe** Tel: +353.21.244.6400
• **India** Tel: +91.80.43537383 • **China** Tel: +86.21.2407.1588
Visit www.macomtech.com for additional data sheets and product information.

M/A-COM Technology Solutions Inc. and its affiliates reserve the right to make changes to the product(s) or information contained herein without notice.

MA4EXP190H1-1277T



Silicon Double Balanced HMIC Mixer
1700 - 2200 MHz

M/A-COM Products
Rev. V3

Electrical Specifications @ +25 °C

Parameter	Frequency Range	Test Conditions	Units	Min.	Avg.	Max.
Conversion Loss	1925 MHz 1700-2200 MHz	LO Drive = +19 dBm RF = -10 dBm, IF = 60 MHz	dB	- -	8.3 8.4	9.5 9.5
L - R Isolation	1925 MHz 1700-2200 MHz	LO Drive = +17 dBm RF Level = -10 dBm	dB	- -	48.0 48.0	- -
L - I Isolation	1925 MHz 1700-2200 MHz	LO Drive = +17 dBm RF Level = -10 dBm	dB	- -	46.0 44.0	- -
R - I Isolation	1925 MHz 1700-2200 MHz	LO Drive = +17 dBm RF Level = -10 dBm	dB	- -	25.0 25.0	- -
RF VSWR	1925 MHz 1700-2200 MHz	LO Drive = +17 dBm RF Level = -10 dBm	Ratio	- -	1.1:1 1.3:1	- -
IF VSWR	DC - 500 MHz	LO Drive = +17 dBm RF Level = -10 dBm	Ratio	- -	1.6:1 -	- -
Input IP3	2025 MHz 1700-2200 MHz	LO Drive = +19 dBm RF = -10 dBm, IF = 60 MHz	dBm	- -	34.0 32.0	- -
Input 1 dB Compression	1925 MHz 1700-2200 MHz	LO Drive = +17 dBm IF = 60 MHz	dBm	- -	11.3 11.2	- -
IF1 dB Bandwidth	DC-400 MHz	LO = 1850 MHz @ +17dBm	MHz	0	-	400

ADVANCED: Data Sheets contain information regarding a product M/A-COM is considering for development. Performance is based on target specifications, simulated results, and/or prototype measurements. Commitment to develop is not guaranteed.

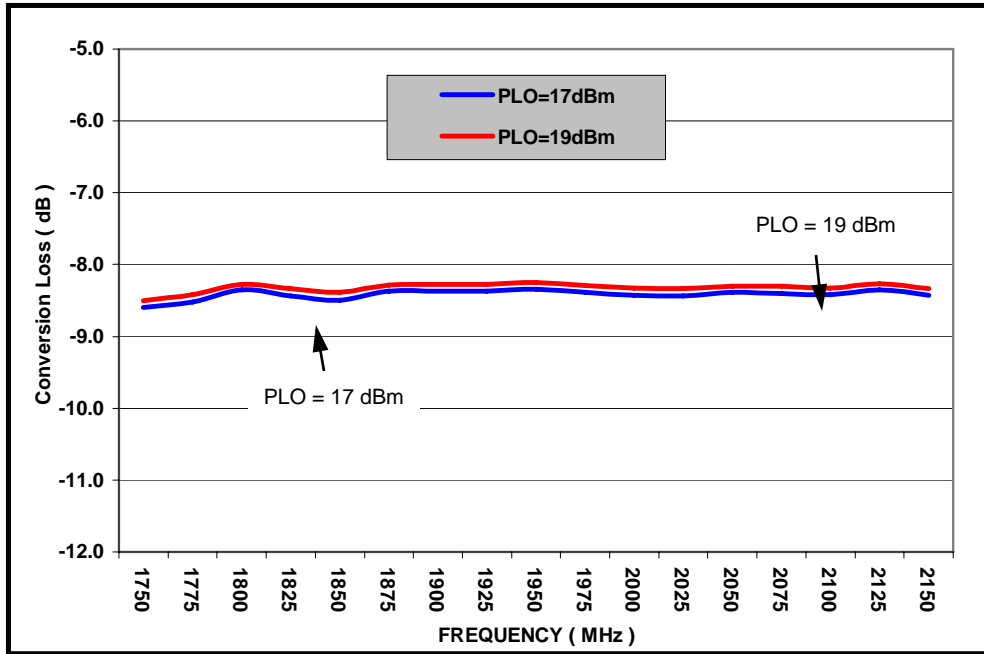
PRELIMINARY: Data Sheets contain information regarding a product M/A-COM has under development. Performance is based on engineering tests. Specifications are typical. Mechanical outline has been fixed. Engineering samples and/or test data may be available. Commitment to produce in volume is not guaranteed.

• **North America** Tel: 800.366.2266 • **Europe** Tel: +353.21.244.6400
• **India** Tel: +91.80.43537383 • **China** Tel: +86.21.2407.1588
Visit www.macomtech.com for additional data sheets and product information.

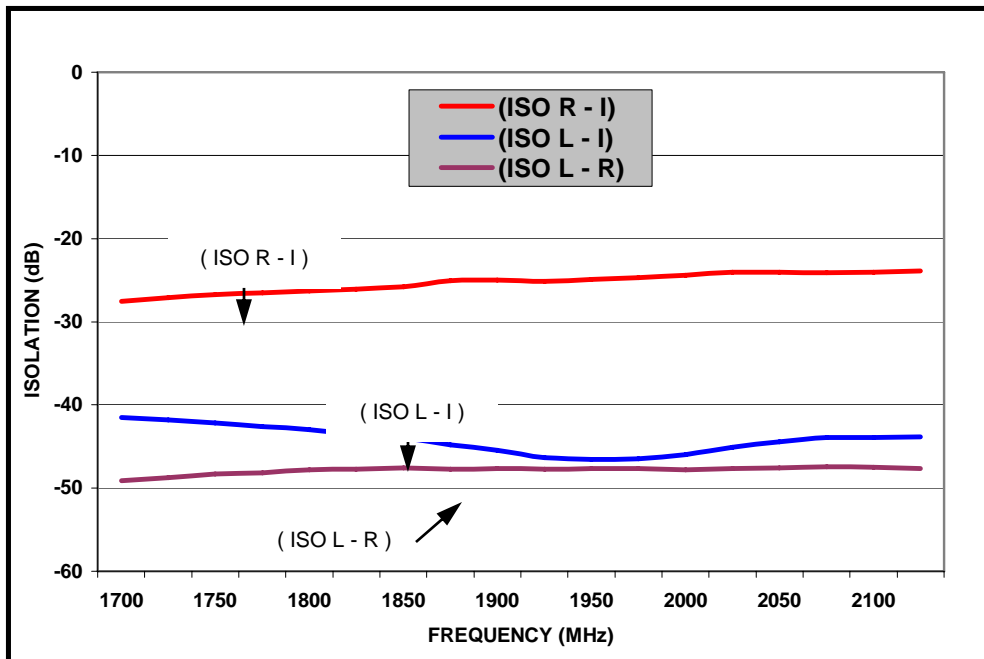
M/A-COM Technology Solutions Inc. and its affiliates reserve the right to make changes to the product(s) or information contained herein without notice.

Typical Performance Curves (LO Drive = +17 dBm, RF = -10 dBm, IF = 60 MHz)

Conversion Loss



Isolation



MA4EXP190H1-1277T

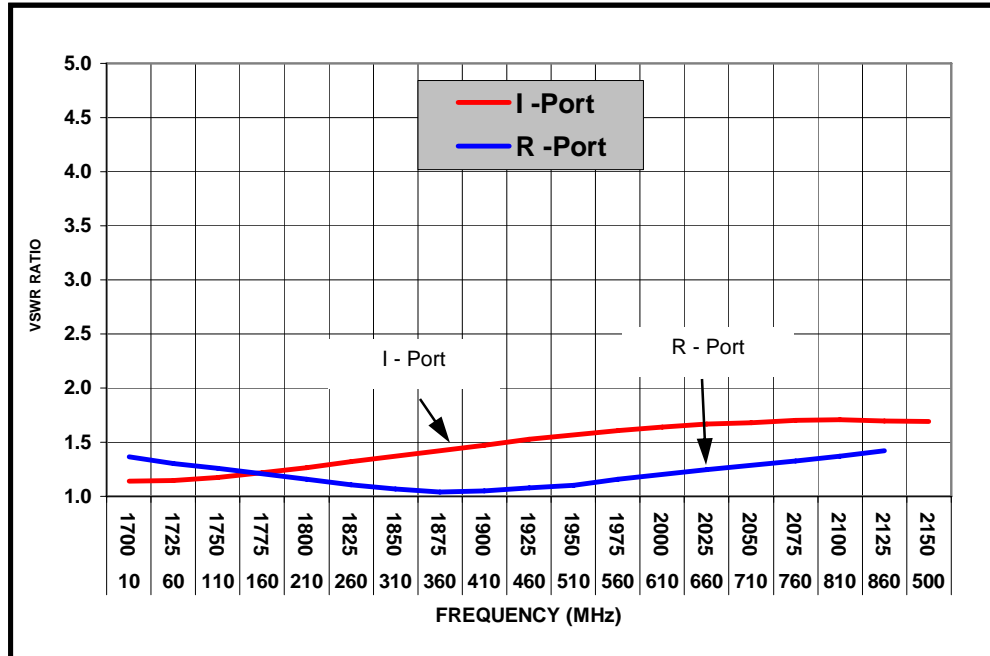


Silicon Double Balanced HMIC Mixer
1700 - 2200 MHz

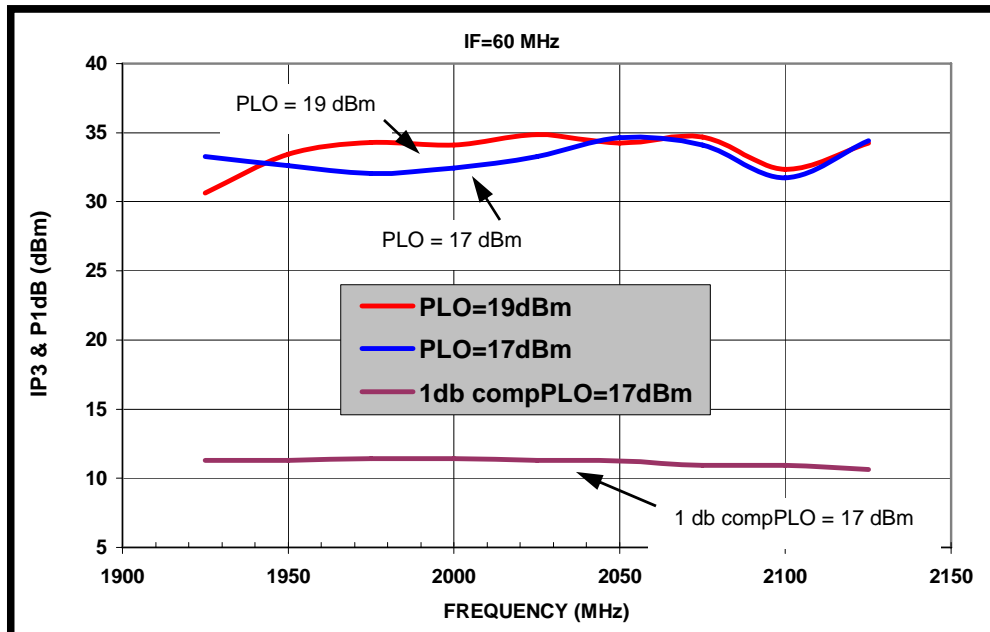
M/A-COM Products
Rev. V3

Typical Performance Curves (LO Drive = +17 dBm, RF = -10 dBm, IF = 60 MHz)

RF & IF VSWR



Input IP3 & 1dB Compression Power



4

ADVANCED: Data Sheets contain information regarding a product M/A-COM is considering for development. Performance is based on target specifications, simulated results, and/or prototype measurements. Commitment to develop is not guaranteed.

PRELIMINARY: Data Sheets contain information regarding a product M/A-COM has under development. Performance is based on engineering tests. Specifications are typical. Mechanical outline has been fixed. Engineering samples and/or test data may be available. Commitment to produce in volume is not guaranteed.

• **North America** Tel: 800.366.2266 • **Europe** Tel: +353.21.244.6400
 • **India** Tel: +91.80.43537383 • **China** Tel: +86.21.2407.1588
 Visit www.macomtech.com for additional data sheets and product information.

M/A-COM Technology Solutions Inc. and its affiliates reserve the right to make changes to the product(s) or information contained herein without notice.

MA4EXP190H1-1277T

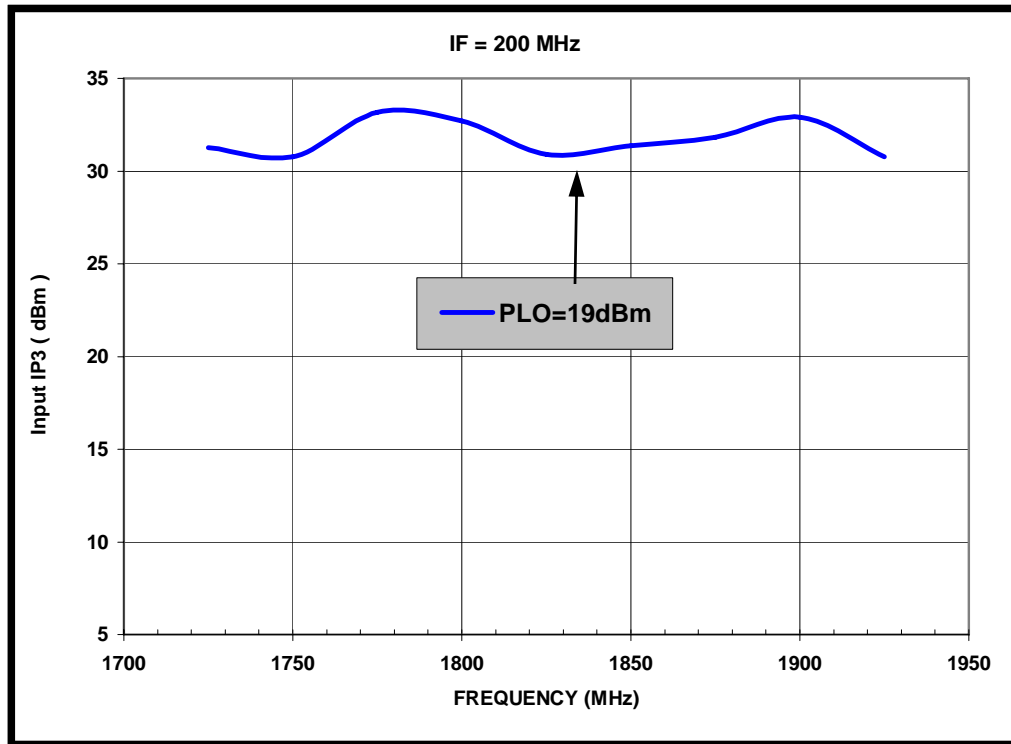


Silicon Double Balanced HMIC Mixer
1700 - 2200 MHz

M/A-COM Products
Rev. V3

Typical Performance Curves (LO Drive = +19 dBm, RF = -10 dBm, IF = 60 MHz)

Input IP3



ADVANCED: Data Sheets contain information regarding a product M/A-COM is considering for development. Performance is based on target specifications, simulated results, and/or prototype measurements. Commitment to develop is not guaranteed.

PRELIMINARY: Data Sheets contain information regarding a product M/A-COM has under development. Performance is based on engineering tests. Specifications are typical. Mechanical outline has been fixed. Engineering samples and/or test data may be available. Commitment to produce in volume is not guaranteed.

- North America Tel: 800.366.2266
- Europe Tel: +353.21.244.6400
- India Tel: +91.80.43537383
- China Tel: +86.21.2407.1588

Visit www.macomtech.com for additional data sheets and product information.

M/A-COM Technology Solutions Inc. and its affiliates reserve the right to make changes to the product(s) or information contained herein without notice.

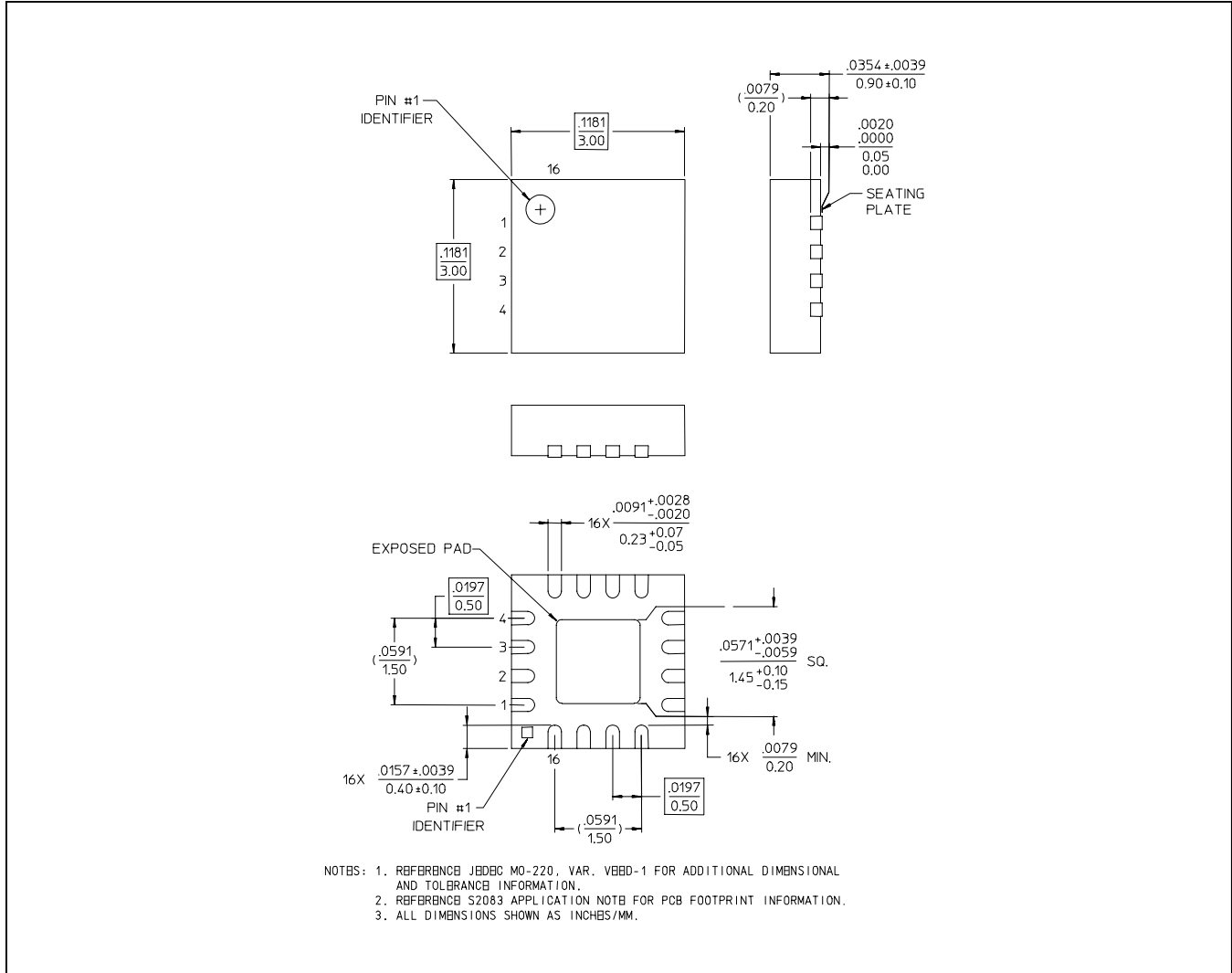
MA4EXP190H1-1277T



Silicon Double Balanced HMIC Mixer
1700 - 2200 MHz

M/A-COM Products
Rev. V3

MA4EXP190H1-1277T Outline - 3mm FQFP-N 16 Lead Saw Singulated



ADVANCED: Data Sheets contain information regarding a product M/A-COM is considering for development. Performance is based on target specifications, simulated results, and/or prototype measurements. Commitment to develop is not guaranteed.

PRELIMINARY: Data Sheets contain information regarding a product M/A-COM has under development. Performance is based on engineering tests. Specifications are typical. Mechanical outline has been fixed. Engineering samples and/or test data may be available. Commitment to produce in volume is not guaranteed.

• **North America** Tel: 800.366.2266 • **Europe** Tel: +353.21.244.6400
• **India** Tel: +91.80.43537383 • **China** Tel: +86.21.2407.1588
Visit www.macomtech.com for additional data sheets and product information.

M/A-COM Technology Solutions Inc. and its affiliates reserve the right to make changes to the product(s) or information contained herein without notice.