

MA4P7418-1072T

SMQ MELF PIN Diode

V3

Features

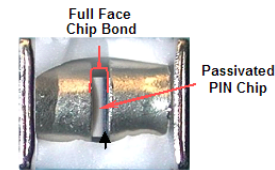
- ◆ RoHS Compliant
- ◆ Rectangular MELF SMQ Ceramic Package
- ◆ Low R_s for Low Series Loss
- ◆ Long τ_L for Low Intermodulation Distortion
- ◆ Low C_j for High Series Isolation
- ◆ High Average Incident Power Handling

Description and Applications

The MA4P7418-10720T is a surface mount PIN diode in a **Metal Electrode Leadless Faced (MELF)** package. The device incorporates M/A-COM Technology Solutions time proven HIPAX technology to produce a low inductance ceramic package with no ribbons or whisker wires. Incorporated in the package is a fully passivated PIN diode chip that is full face bonded on both the cathode and anode to maximize the surface contact area for low electrical and thermal resistance. The MA4P7418-10720T has been comprehensively characterized both electrically and mechanically to ensure repeatable and predictable performance. The diode is well suited for use in low loss, low distortion, high power switching circuits. The low thermal resistance of this device provides excellent high average performance at RF power incident levels up to 200 watts CW. This device is designed to meet the most rigorous electrical and mechanical requirements.



1072



Diode Cross Section

Designed for Automated Assembly

SMQ MELF PIN diodes are designed for high volume tape and reel assembly. The rectangular package design provides a highly efficient means for automatic pick and place assembly techniques. The parallel flat surfaces are suitable for key jaw or vacuum pickup techniques. All solderable surfaces are tin plated and compatible with reflow and vapor phase soldering methods.

Absolute Maximum Ratings¹ @ +25°C

Parameter	Absolute Maximum
Operating Temperature	-65°C to +125°C
Storage Temperature	-65°C to +200°C
Diode Junction Temperature	+175°C
Diode Mounting Temperature	+265°C for 10 seconds
C.W. Thermal Resistance (Θ_{jc}) Using Infinite Heat Sink	13 °C/W
Power Dissipation @ +25°C De-rate linearly by to 0W @ +175C by -76.6 mW/°C Using Infinite Heat Sink	11.5 W
Forward D.C. Current	+150mA
Reverse D.C. Voltage	-1100V

1. Exceeding any of these limits may cause permanent damage.

1

ADVANCED: Data Sheets contain information regarding a product M/A-COM Technology Solutions is considering for development. Performance is based on target specifications, simulated results, and/or prototype measurements. Commitment to develop is not guaranteed.

PRELIMINARY: Data Sheets contain information regarding a product M/A-COM Technology Solutions has under development. Performance is based on engineering tests. Specifications are typical. Mechanical outline has been fixed. Engineering samples and/or test data may be available. Commitment to produce in volume is not guaranteed.

• **North America** Tel: 800.366.2266 • **Europe** Tel: +353.21.244.6400
• **India** Tel: +91.80.43537383 • **China** Tel: +86.21.2407.1588
Visit www.macomtech.com for additional data sheets and product information.

M/A-COM Technology Solutions Inc. and its affiliates reserve the right to make changes to the product(s) or information contained herein without notice.

MA4P7418-1072T

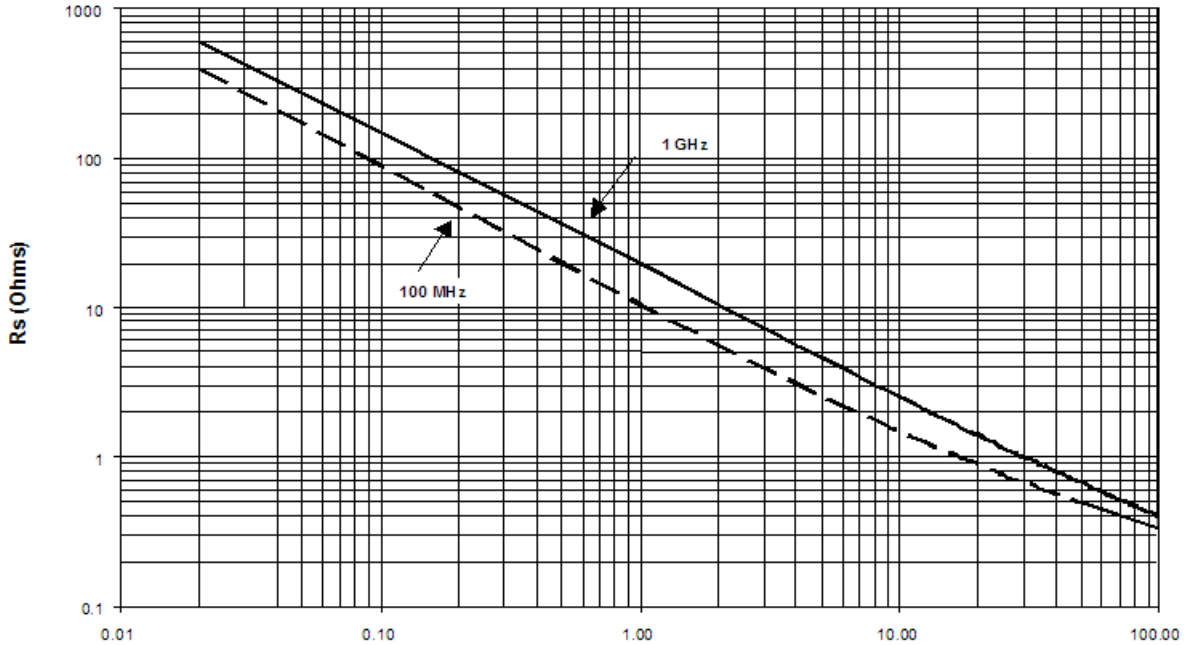


SMO MELF PIN Diode

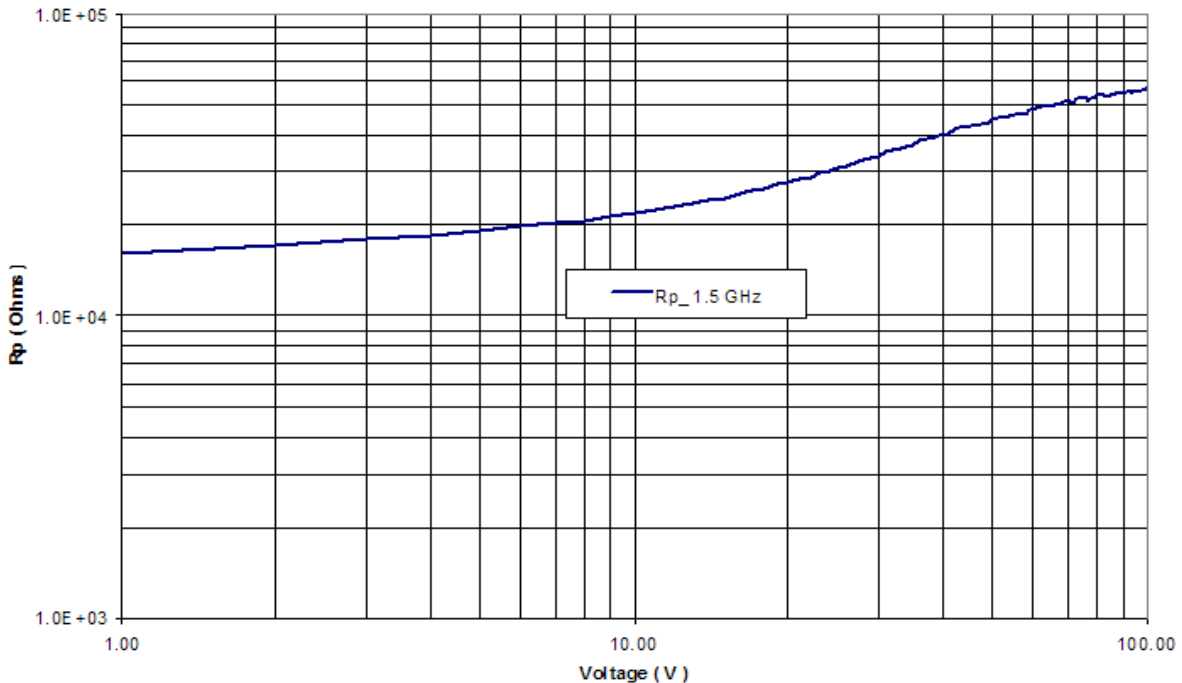
V3

Typical Electrical Performance @ +25°C

MA4P7418-1072T Rs vs I



MA4P7418-1072T Rp vs Voltage



2

ADVANCED: Data Sheets contain information regarding a product M/A-COM Technology Solutions is considering for development. Performance is based on target specifications, simulated results, and/or prototype measurements. Commitment to develop is not guaranteed.
PRELIMINARY: Data Sheets contain information regarding a product M/A-COM Technology Solutions has under development. Performance is based on engineering tests. Specifications are typical. Mechanical outline has been fixed. Engineering samples and/or test data may be available. Commitment to produce in volume is not guaranteed.

• **North America** Tel: 800.366.2266 • **Europe** Tel: +353.21.244.6400
 • **India** Tel: +91.80.43537383 • **China** Tel: +86.21.2407.1588
 Visit www.macomtech.com for additional data sheets and product information.

M/A-COM Technology Solutions Inc. and its affiliates reserve the right to make changes to the product(s) or information contained herein without notice.

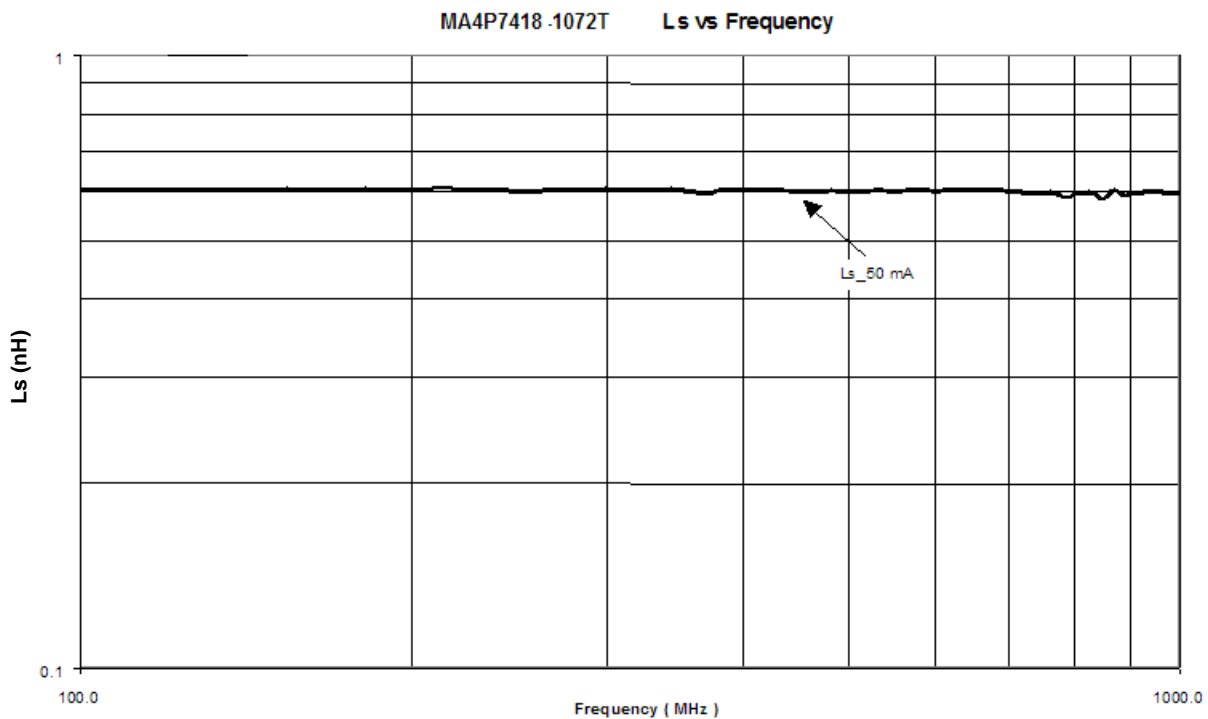
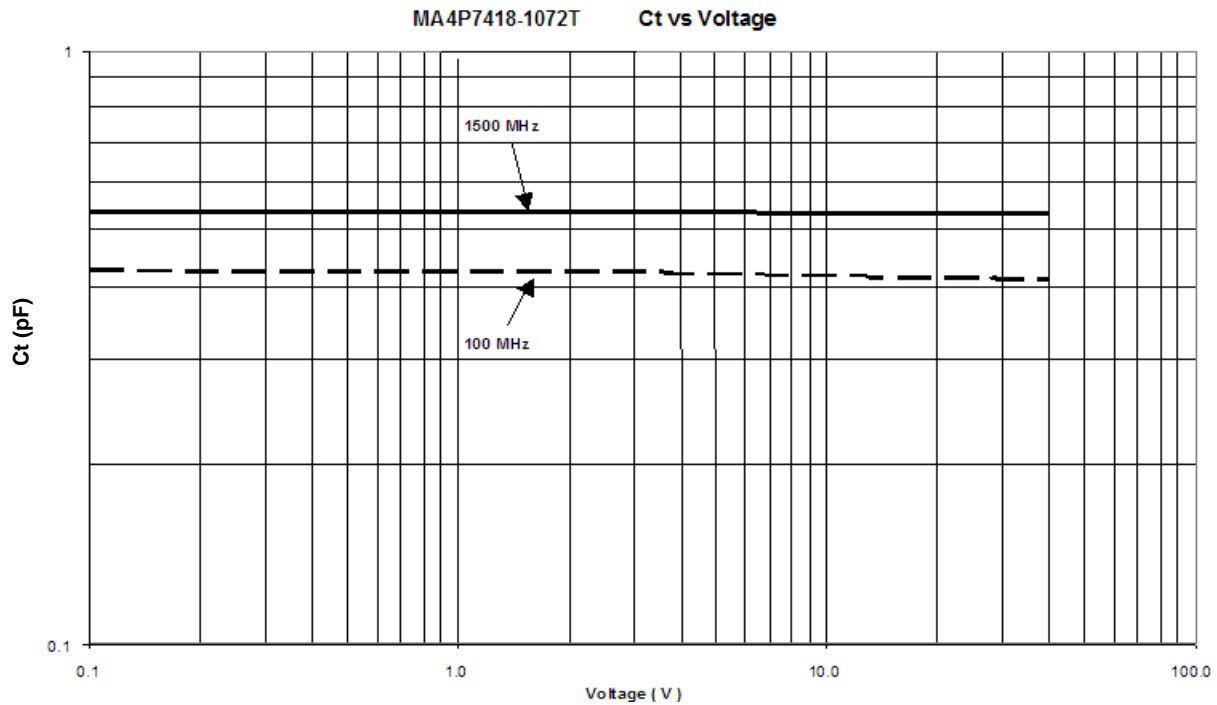
MA4P7418-1072T



SMO MELF PIN Diode

V3

Typical Electrical Performance @ +25°C



3

ADVANCED: Data Sheets contain information regarding a product M/A-COM Technology Solutions is considering for development. Performance is based on target specifications, simulated results, and/or prototype measurements. Commitment to develop is not guaranteed.
PRELIMINARY: Data Sheets contain information regarding a product M/A-COM Technology Solutions has under development. Performance is based on engineering tests. Specifications are typical. Mechanical outline has been fixed. Engineering samples and/or test data may be available. Commitment to produce in volume is not guaranteed.

• **North America** Tel: 800.366.2266 • **Europe** Tel: +353.21.244.6400
• **India** Tel: +91.80.43537383 • **China** Tel: +86.21.2407.1588
Visit www.macomtech.com for additional data sheets and product information.

M/A-COM Technology Solutions Inc. and its affiliates reserve the right to make changes to the product(s) or information contained herein without notice.

www.BDTIC.com/MACOM

MA4P7418-1072T

SMQ MELF PIN Diode

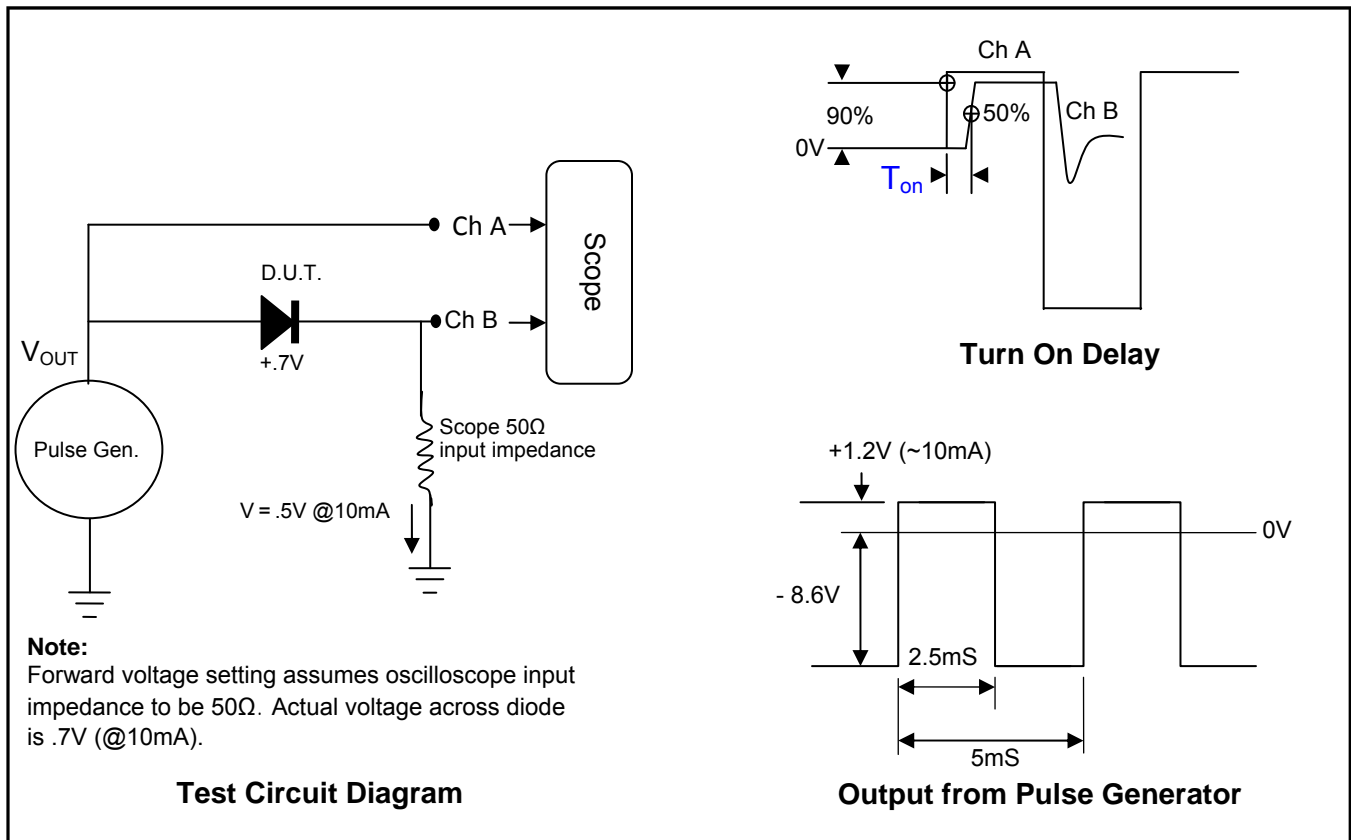
V3

Electrical Specifications @ +25 °C

Parameter	Symbol	Condition	Unit Value
Forward Voltage (Maximum)	V_F	$I_F = +100\text{mA}$	1.0 V_{DC}
Voltage Rating (Minimum) ¹	V_R	$I_r = -10\mu\text{A}$	$ -1100 V_{DC}$
Total Capacitance (Maximum)	C_T	-100V @ 100MHz	0.8pF
Series Resistance (Maximum)	R_S	+100mA @ 100MHz	1.2 Ohms
Parallel Resistance (Minimum)	R_P	-10V @ 100MHz	50K Ω
Carrier Lifetime (Nominal)	τ_L	+6mA / -10mA (50% - 90% Voltage)	7 μs
Turn on Delay, T_{on} (Maximum) ²	T_{ON}	50% Control Voltage - 90% Output Voltage	2.5 μs
I-Region Length (Nominal)	μm	-	140 μm
C.W. Thermal Resistance (Maximum)	θ_{jc}	$I_H = 1\text{A}, I_L = 10\text{mA}, T = 1\text{mS}$	13°C/W
Power Dissipation in Free Air (Maximum)	W	$I_F = +100\text{mA}$	4W
Power Dissipation with IHS (Maximum)	P_D	$I_F = +100\text{mA}$	11.5W

Note:

- V_R (Reverse Voltage) is sourced and the resultant reverse leakage current, I_r , is measured to be $<10\mu\text{A}$.
- See below for turn on delay measurement



4

ADVANCED: Data Sheets contain information regarding a product M/A-COM Technology Solutions is considering for development. Performance is based on target specifications, simulated results, and/or prototype measurements. Commitment to develop is not guaranteed.
PRELIMINARY: Data Sheets contain information regarding a product M/A-COM Technology Solutions has under development. Performance is based on engineering tests. Specifications are typical. Mechanical outline has been fixed. Engineering samples and/or test data may be available. Commitment to produce in volume is not guaranteed.

• **North America** Tel: 800.366.2266 • **Europe** Tel: +353.21.244.6400
 • **India** Tel: +91.80.43537383 • **China** Tel: +86.21.2407.1588
 Visit www.macomtech.com for additional data sheets and product information.

M/A-COM Technology Solutions Inc. and its affiliates reserve the right to make changes to the product(s) or information contained herein without notice.

MA4P7418-1072T



SMQ MELF PIN Diode

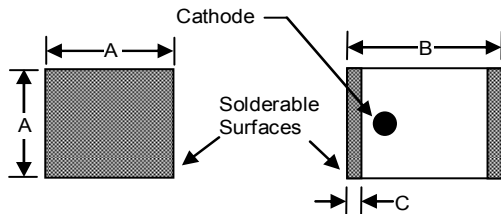
V3

Environmental Capability

MELF devices may be used in industrial or military applications and can be screened to meet the environmental requirements of MIL-STD-750, MIL-STD-202 as well as other military standards. The table below lists some of the MIL-STD 750 tests the device is designed to meet.

MIL-STD-750		
Test	Method	Description
High Temperature Storage	1031	+150°C, for 340 Hours
Temperature Shock	1051	-65°C to +125°C, 20 Cycles
HTRB	1038	80% of rated V_B , +150 °C, for 96 Hours
Moisture Resistance	1021	No Initial Conditioning, 85% RH, +85°C
Gross Leak	1071 Cond. E	Dye Penetrant Visual
Vibration Fatigue	2046	20,000 G's, 60 Hz, x, y, z axis
Solderability	2026	Test Temperature = +245°C

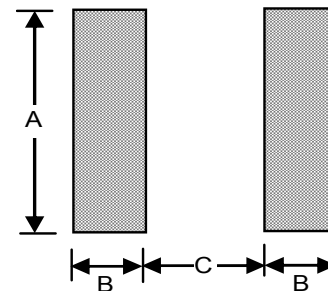
1072 MELF Surface Mount Package



Dimension	INCHES		MM	
	MIN.	MAX.	MIN.	MAX.
A	0.080	0.095	2.032	2.413
B	0.115	0.135	2.921	3.429
C	0.008	0.030	0.203	0.762

Circuit Pad Layout for 1072 MELF

Dimension	inches	mm
A	0.093	2.36
B	0.050	1.27
C	0.060	1.52



Ordering Information

Part Number	Package	Quantity
MA4P7418-1072T	Tape and reel	1500ps

5

ADVANCED: Data Sheets contain information regarding a product M/A-COM Technology Solutions is considering for development. Performance is based on target specifications, simulated results, and/or prototype measurements. Commitment to develop is not guaranteed.
PRELIMINARY: Data Sheets contain information regarding a product M/A-COM Technology Solutions has under development. Performance is based on engineering tests. Specifications are typical. Mechanical outline has been fixed. Engineering samples and/or test data may be available. Commitment to produce in volume is not guaranteed.

• **North America** Tel: 800.366.2266 • **Europe** Tel: +353.21.244.6400
 • **India** Tel: +91.80.43537383 • **China** Tel: +86.21.2407.1588
 Visit www.macomtech.com for additional data sheets and product information.

M/A-COM Technology Solutions Inc. and its affiliates reserve the right to make changes to the product(s) or information contained herein without notice.