



GaN HEMT Power Transistor
100W Peak, 1.2 - 2.0 GHz

Production V1
19 Sept 11

Features

- GaN depletion mode HEMT microwave transistor
- Common source configuration
- Broadband Class AB operation
- Thermally enhanced Cu/Mo/Cu package
- RoHS Compliant
- +50V Typical Operation
- MTTF of 114 years (Channel Temperature < 200°C)

Applications

General purpose for pulsed or CW applications

- Commercial Wireless Infrastructure
 - WCDMA, LTE, WiMAX
- Civilian and Military Radar
- Military and Commercial Communications
- Public Radio
- Industrial, Scientific and Medical
- SATCOM
- Instrumentation
- DTV



Product Description

The MAGX-001220-100L00 is a gold metalized Gallium Nitride (GaN) on Silicon Carbide RF power transistor suitable for a variety of RF power amplifier applications. Using state of the art wafer fabrication processes, these high performance transistors provide high gain, efficiency, bandwidth, ruggedness over multiple octave bandwidths for today's demanding application needs. The MAGX-001220-100L00 is constructed using a thermally enhanced Cu/Mo/Cu flanged ceramic package which provides excellent thermal performance. High breakdown voltages allow for reliable and stable operation in extreme mismatched load conditions unparalleled with older semiconductor technologies.

Typical CW RF Performance

Freq. (MHz)	Pin (W Peak)	Pout (W Peak)	Gain (dB)	Id-Pk (A)	Eff (%)
1200	4	120	14.8	4.0	60
1400	4	120	14.8	4.6	52
1600	4	130	15.1	4.9	53
1800	4	120	14.8	4.4	54
2000	4	120	14.8	4.5	53

Ordering Information

MAGX-001220-100L00 100W GaN Power Transistor
 MAGX-001220-1SB1PPR Evaluation Board

GaN HEMT Power Transistor
100W Peak, 1.2 - 2.0 GHz

Production V1
19 Sept 11

Absolute Maximum Ratings Table (1, 2, 3)

Supply Voltage (V _{dd})	+65V
Supply Voltage (V _{gg})	-8 to 0V
Supply Current (I _{d1})	9A Pk
Input Power (P _{in})	+38 dBm
Absolute Max. Junction/Channel Temp	200 °C
Pulsed Power Dissipation (P _{avg}) at 85 °C	105W
MTTF (T _J <200°C)	114 years
Thermal Resistance, (T _{channel} = 200 °C) V _{DD} = 50V, I _{DQ} = 100mA, P _{out} = 100W 300us Pulse / 10% Duty	0.84 °C/W
Operating Temp	-40 to +95C
Storage Temp	-65 to +150C
ESD Min. - Machine Model (MM)	50 V
ESD Min. - Human Body Model (HBM)	>250 V
MSL Level	MSL1

(1) Operation of this device above any one of these parameters may cause permanent damage.

(2) Channel temperature directly affects a device's MTTF. Channel temperature should be kept as low as possible to maximize lifetime.

(3) For saturated performance it recommended that the sum of (3*V_{dd} + abs(V_{gg})) < 175

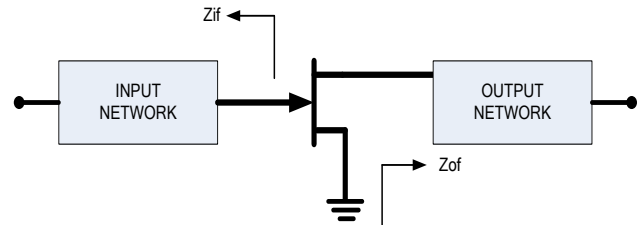
Parameter	Test Conditions	Symbol	Min	Typ	Max	Units
DC CHARACTERISTICS						
Drain-Source Leakage Current	V _{GS} = -8V, V _{DS} = 175V	I _{DS}	-	-	6	mA
Gate Threshold Voltage	V _{DS} = 5V, I _D = 15.0mA	V _{GS(th)}	-5	-3	-2	V
Forward Transconductance	V _{DS} = 5V, I _D = 3.5A	G _M	2.5	-	-	S
DYNAMIC CHARACTERISTICS						
Input Capacitance	Not applicable—Input internally matched	N/A	N/A	N/A	N/A	pF
Output Capacitance	V _{DS} = 50V, V _{GS} = -8V, F = 1MHz	C _{OSS}	-	30.3	35	pF
Feedback Capacitance	V _{DS} = 50V, V _{GS} = -8V, F = 1MHz	C _{RSS}	-	2.8	5.4	pF

Electrical Specifications: $T_C = 25 \pm 5^\circ\text{C}$ (Room Ambient)

Parameter	Test Conditions	Symbol	Min	Typ	Max	Units
RF FUNCTIONAL TESTS $V_{dd}=50V, I_{dq}=500mA$ (pulsed), $F=1.2\text{--}2.0$ GHz, $Pulse=300\mu s$, $Duty=10\%$						
Output Power	Pin = 4W Peak, 0.4W Ave	P_{OUT}	100	110	-	W Peak
Power Gain	Pout = 100W Peak, 10W Ave	G_P	14.0	14.8	-	dB
Drain Efficiency	Pin = 4W Peak, 0.4W Ave	η_D	50	55	-	%
Load Mismatch Stability	Pin = 4W Peak, 0.4W Ave	VSWR-S	5:1	-	-	-
Load Mismatch Tolerance	Pin = 4W Peak, 0.4W Ave	VSWR-T	10:1	-	-	-

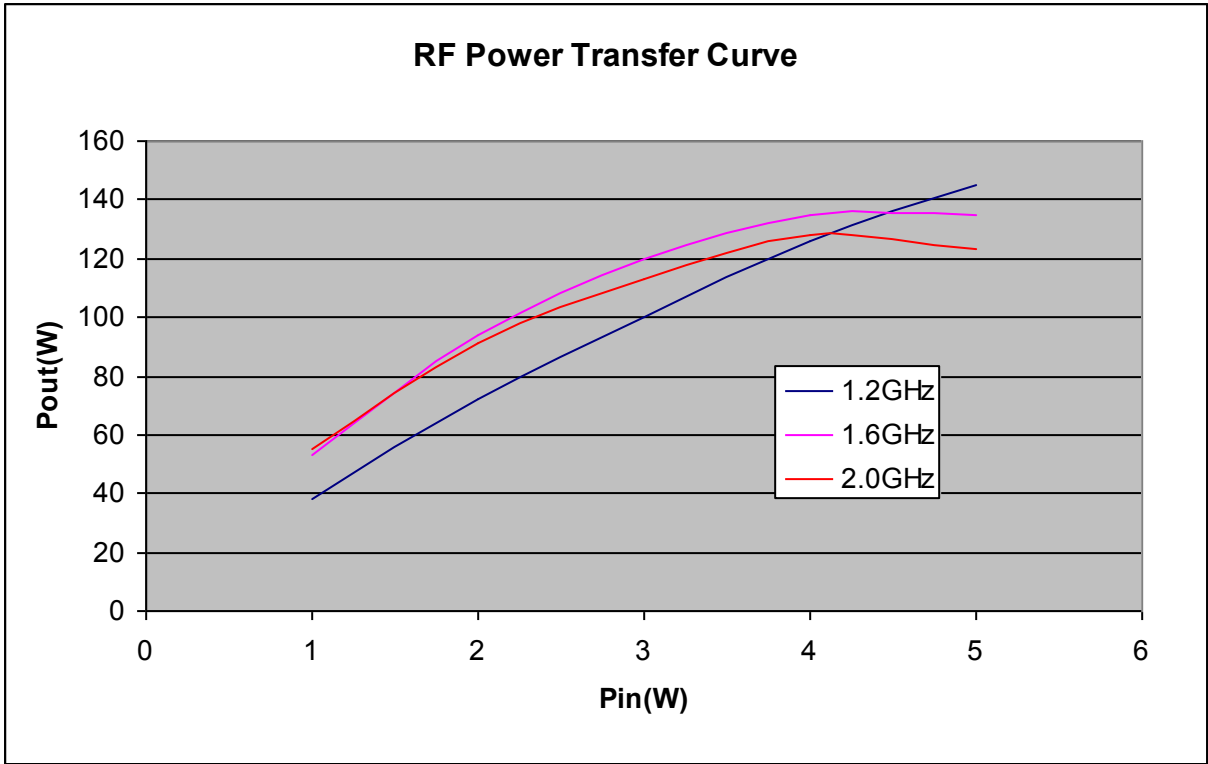
Test Fixture Impedance

F (MHz)	Z_{IF} (Ω)	Z_{OF} (Ω)
1200	3.82 - j2.85	8.6 + j1.1
1400	4.17 - j1.79	6.9 + j0.16
1600	4.69 - j2.15	6.8 + j0.7
1800	3.53 - j2.79	6.1 - j0.6
2000	2.19 - j1.90	3.2 + j0.39



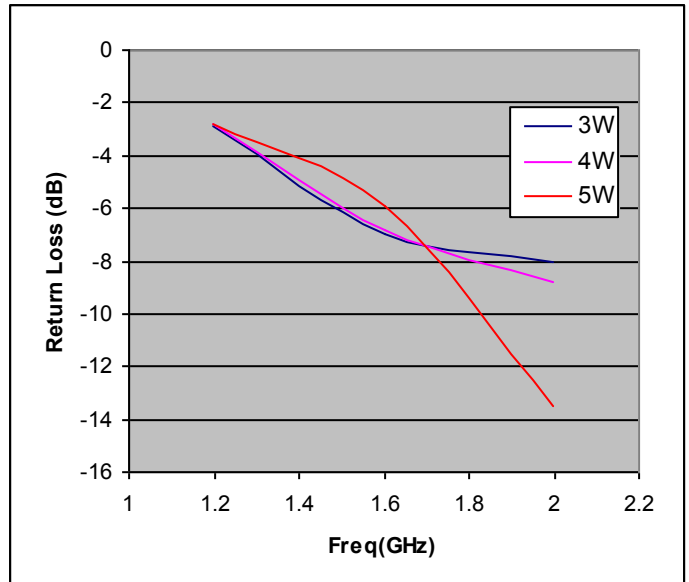
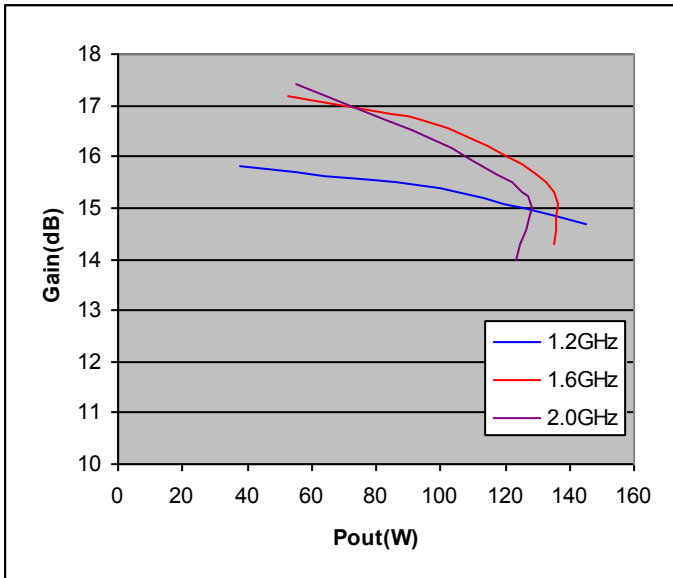
GaN HEMT Power Transistor
100W Peak, 1.2 - 2.0 GHz

Production V1
19 Sept 11



**RF Power Transfer Curve
Power Gain vs. Output Power**

Return Loss vs. Frequency



ADVANCED: Data Sheets contain information regarding a product M/A-COM Technology Solutions is considering for development. Performance is based on target specifications, simulated results, and/or prototype measurements. Commitment to develop is not guaranteed.

PRELIMINARY: Data Sheets contain information regarding a product M/A-COM Technology Solutions has under development. Performance is based on engineering tests. Specifications are typical. Mechanical outline has been fixed. Engineering samples and/or test data may be available. Commitment to produce in volume is not guaranteed.

- **North America** Tel: 800.366.2266 / Fax: 978.366.2266
- **Europe** Tel: 44.1908.574.200 / Fax: 44.1908.574.300
- **Asia/Pacific** Tel: 81.44.844.8296 / Fax: 81.44.844.8298

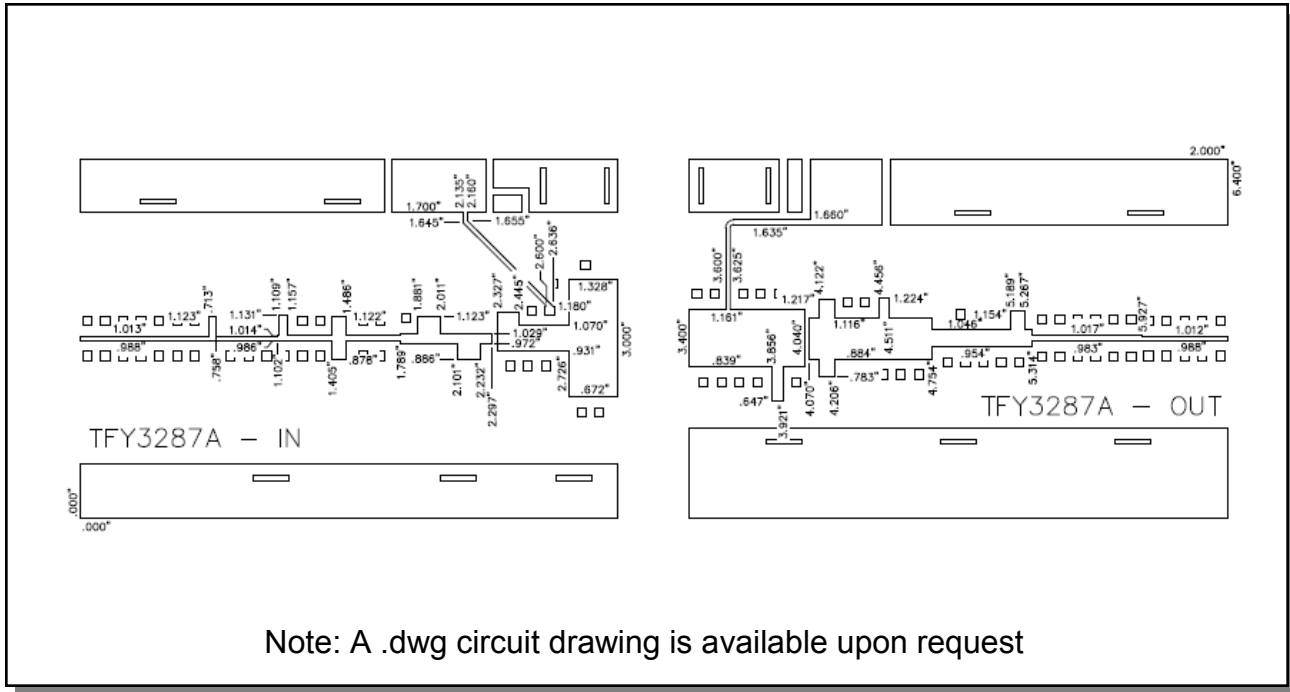
Visit www.macomtech.com for additional data sheets and product information.

M/A-COM Technology Solutions and its affiliates reserve the right to make changes to the product or information contained herein without notice.

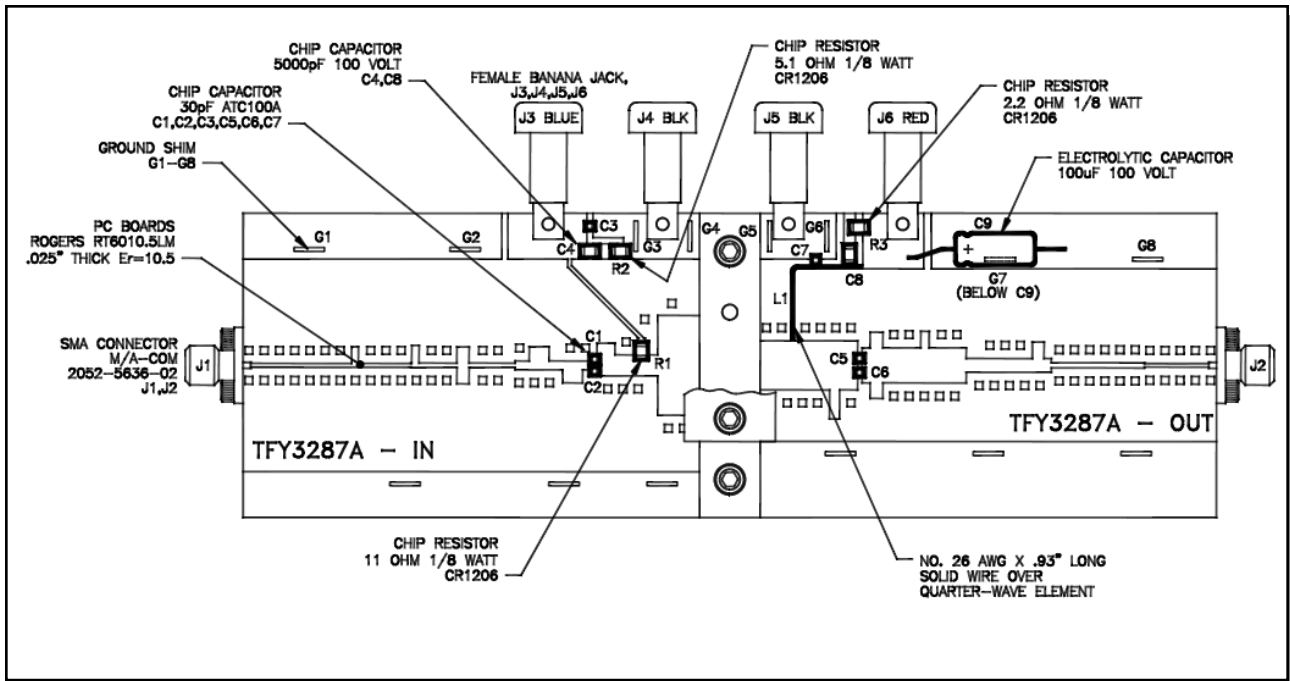
GaN HEMT Power Transistor
100W Peak, 1.2 - 2.0 GHz

Production V1
19 Sept 11

Test Fixture Circuit Dimensions



Test Fixture Assembly



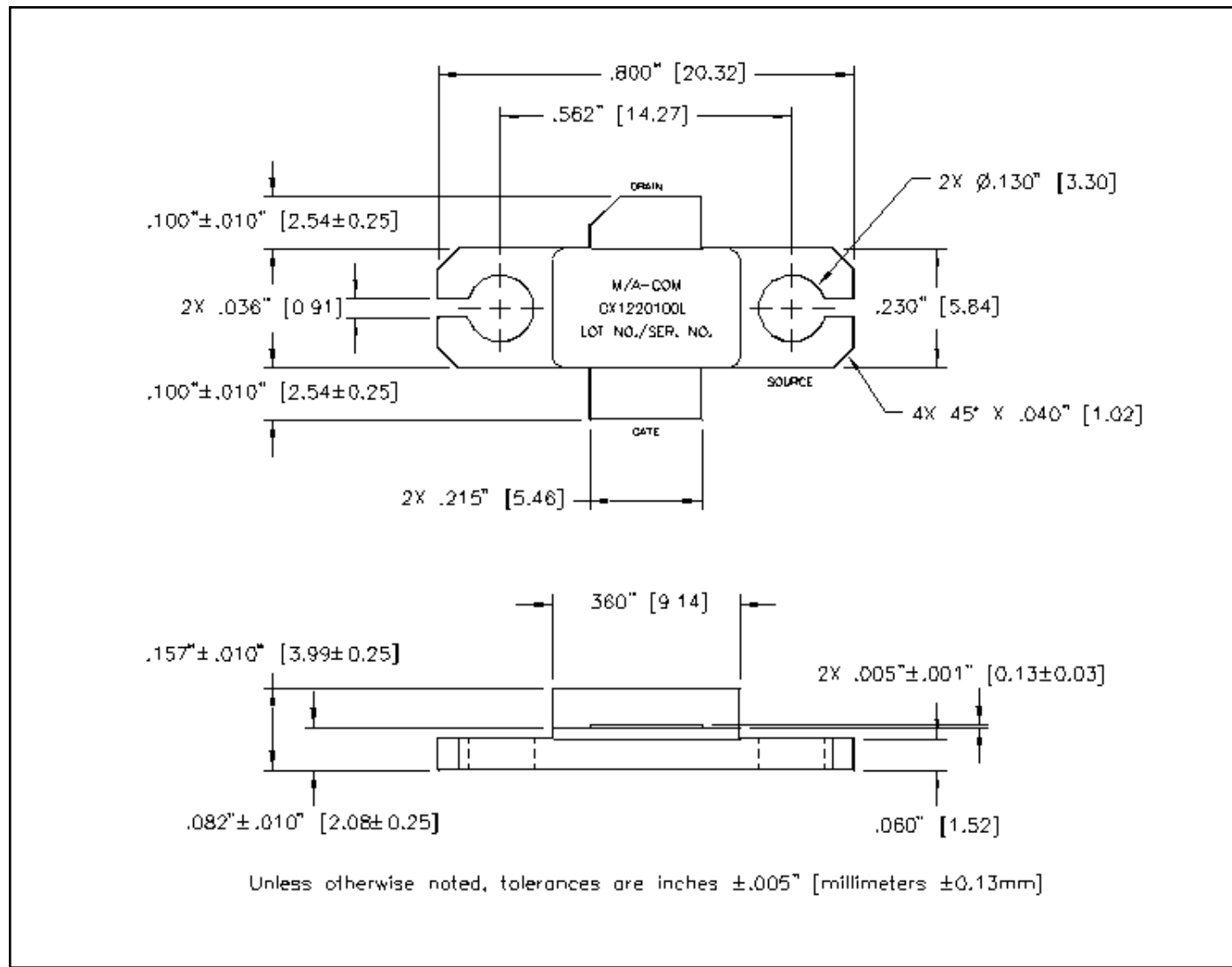
ADVANCED: Data Sheets contain information regarding a product M/A-COM Technology Solutions is considering for development. Performance is based on target specifications, simulated results, and/or prototype measurements. Commitment to develop is not guaranteed.

PRELIMINARY: Data Sheets contain information regarding a product M/A-COM Technology Solutions has under development. Performance is based on engineering tests. Specifications are typical. Mechanical outline has been fixed. Engineering samples and/or test data may be available. Commitment to produce in volume is not guaranteed.

- **North America** Tel: 800.366.2266 / Fax: 978.366.2266
 - **Europe** Tel: 44.1908.574.200 / Fax: 44.1908.574.300
 - **Asia/Pacific** Tel: 81.44.844.8296 / Fax: 81.44.844.8298
- Visit www.macomtech.com for additional data sheets and product information.

M/A-COM Technology Solutions and its affiliates reserve the right to make changes to the products or information contained herein without notice.

Outline Drawings



CORRECT DEVICE BIAS SEQUENCING

TURNING THE DEVICE ON

1. Set V_{GS} to the pinch-off (V_P), typically -5V
2. Turn on V_{DS} to nominal voltage (50V)
3. Increase V_{GS} until the I_{DS} current is reached
4. Apply RF power to desired level

TURNING THE DEVICE OFF

1. Turn the RF power off
2. Decrease V_{GS} down to V_P
3. Decrease V_{DS} down to 0V
4. Turn off V_{GS}