

2N2907A

Small Signal Switching Transistor

PNP Silicon

Features

- MIL-PRF-19500/291 Qualified
- Available as JAN, JANTX, and JANTXV

MAXIMUM RATINGS

Rating	Symbol	Value	Unit
Collector - Emitter Voltage	V_{CEO}	-60	Vdc
Collector - Base Voltage	V_{CBO}	-60	Vdc
Emitter - Base Voltage	V_{EBO}	-5.0	Vdc
Collector Current - Continuous	I_C	-600	mAdc
Total Device Dissipation @ $T_A = 25^\circ\text{C}$	P_T	500	mW
Total Device Dissipation @ $T_C = 25^\circ\text{C}$	P_T	1.0	W
Operating and Storage Junction Temperature Range	T_J, T_{stg}	-65 to +200	$^\circ\text{C}$

THERMAL CHARACTERISTICS

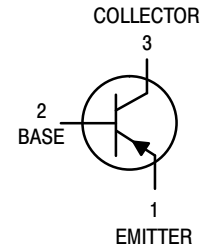
Characteristic	Symbol	Max	Unit
Thermal Resistance, Junction-to-Ambient	$R_{\theta JA}$	325	$^\circ\text{C}/\text{W}$
Thermal Resistance, Junction-to-Case	$R_{\theta JC}$	150	$^\circ\text{C}/\text{W}$

Stresses exceeding Maximum Ratings may damage the device. Maximum Ratings are stress ratings only. Functional operation above the Recommended Operating Conditions is not implied. Extended exposure to stresses above the Recommended Operating Conditions may affect device reliability.



ON Semiconductor®

<http://onsemi.com>



TO-18
CASE 206AA
STYLE 1

ORDERING INFORMATION

Device	Package	Shipping
JAN2N2907A	TO-18	Bulk
JANTX2N2907A		
JANTXV2N2907A		

2N2907A

ELECTRICAL CHARACTERISTICS ($T_A = 25^\circ\text{C}$ unless otherwise noted)

Characteristic	Symbol	Min	Max	Unit
OFF CHARACTERISTICS				
Collector - Emitter Breakdown Voltage ($I_C = -10 \text{ mAdc}$)	$V_{(BR)CEO}$	-60	-	Vdc
Collector - Emitter Cutoff Current ($V_{CE} = -50 \text{ Vdc}$)	I_{CES}	-	-50	nAdc
Collector - Base Cutoff Current ($V_{CB} = -50 \text{ Vdc}, I_E = 0$) ($V_{CB} = -60 \text{ Vdc}, I_E = 0$)	I_{CBO}	- -	-10 -10	nAdc μAdc
Emitter - Base Cutoff Current ($V_{EB} = -4.0 \text{ Vdc}$) ($V_{EB} = -5.0 \text{ Vdc}$)	I_{EBO}	- -	-50 -10	nAdc μAdc

ON CHARACTERISTICS (Note 1)

DC Current Gain ($I_C = -0.1 \text{ mAdc}, V_{CE} = -10 \text{ Vdc}$) ($I_C = -1.0 \text{ mAdc}, V_{CE} = -10 \text{ Vdc}$) ($I_C = -10 \text{ mAdc}, V_{CE} = -10 \text{ Vdc}$) ($I_C = -150 \text{ mAdc}, V_{CE} = -10 \text{ Vdc}$) ($I_C = -500 \text{ mAdc}, V_{CE} = -10 \text{ Vdc}$)	h_{FE}	75 100 100 100 50	- 450 - 300 -	-
Collector - Emitter Saturation Voltage ($I_C = -150 \text{ mAdc}, I_B = -15 \text{ mAdc}$) ($I_C = -500 \text{ mAdc}, I_B = -50 \text{ mAdc}$)	$V_{CE(sat)}$	- -	-0.4 -1.6	Vdc
Base - Emitter Saturation Voltage ($I_C = -150 \text{ mAdc}, I_B = -15 \text{ mAdc}$) ($I_C = -500 \text{ mAdc}, I_B = -50 \text{ mAdc}$)	$V_{BE(sat)}$	-0.6 -	-1.3 -2.6	Vdc

SMALL-SIGNAL CHARACTERISTICS

Magnitude of Small-Signal Current Gain ($I_C = -20 \text{ mAdc}, V_{CE} = -20 \text{ Vdc}, f = 100 \text{ MHz}$)	$ h_{fe} $	2.0	-	-
Small-Signal Current Gain ($I_C = -1.0 \text{ mAdc}, V_{CE} = -10 \text{ Vdc}, f = 1 \text{ kHz}$)	h_{fe}	100	-	-
Output Capacitance ($V_{CB} = -10 \text{ Vdc}, I_E = 0, 100 \text{ kHz} \leq f \leq 1.0 \text{ MHz}$)	C_{obo}	-	8.0	pF
Input Capacitance ($V_{EB} = -2.0 \text{ Vdc}, I_C = 0, 100 \text{ kHz} \leq f \leq 1.0 \text{ MHz}$)	C_{ibo}	-	30	pF

SWITCHING CHARACTERISTICS

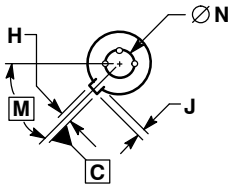
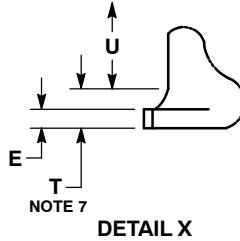
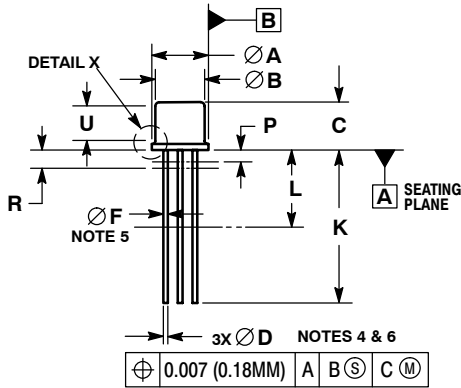
Turn-On Time (Reference Figure in MIL-PRF-19500/291)	t_{on}	-	45	ns
Turn-Off Time (Reference Figure in MIL-PRF-19500/291)	t_{off}	-	300	ns

1. Pulse Test: Pulse Width = 300 μs , Duty Cycle $\leq 2.0\%$.

2N2907A

PACKAGE DIMENSIONS

TO-18 3
CASE 206AA
ISSUE A



NOTES:

1. DIMENSIONING AND TOLERANCING PER ASME Y14.5M, 1994.
2. CONTROLLING DIMENSION: INCHES.
3. DIMENSION J MEASURED FROM DIAMETER A TO EDGE.
4. LEAD TRUE POSITION TO BE DETERMINED AT THE GAUGE PLANE DEFINED BY DIMENSION R.
5. DIMENSION F APPLIES BETWEEN DIMENSION P AND L.
6. DIMENSION D APPLIES BETWEEN DIMENSION L AND K.
7. BODY CONTOUR OPTIONAL WITHIN ZONE DEFINED BY DIMENSIONS A, B, AND T.

DIM	MILLIMETERS		INCHES	
	MIN	MAX	MIN	MAX
A	5.31	5.84	0.209	0.230
B	4.52	4.95	0.178	0.195
C	4.32	5.33	0.170	0.210
D	0.41	0.53	0.016	0.021
E	---	0.76	---	0.030
F	0.41	0.48	0.016	0.019
H	0.91	1.17	0.036	0.046
J	0.71	1.22	0.028	0.048
K	12.70	19.05	0.500	0.750
L	6.35	---	0.250	---
M	45° BSC		45° BSC	
N	2.54 BSC		0.100 BSC	
P	---	1.27	---	0.050
R	1.37 BSC		0.054 BSC	
T	---	0.76	---	0.030
U	2.54	---	0.100	---

STYLE 1:

1. PIN 1. EMITTER
2. BASE
3. COLLECTOR

ON Semiconductor and **ON** are registered trademarks of Semiconductor Components Industries, LLC (SCILLC). SCILLC owns the rights to a number of patents, trademarks, copyrights, trade secrets, and other intellectual property. A listing of SCILLC's product/patent coverage may be accessed at www.onsemi.com/site/pdf/Patent-Marking.pdf. SCILLC reserves the right to make changes without further notice to any products herein. SCILLC makes no warranty, representation or guarantee regarding the suitability of its products for any particular purpose, nor does SCILLC assume any liability arising out of the application or use of any product or circuit, and specifically disclaims any and all liability, including without limitation special, consequential or incidental damages. "Typical" parameters which may be provided in SCILLC data sheets and/or specifications can and do vary in different applications and actual performance may vary over time. All operating parameters, including "Typicals" must be validated for each customer application by customer's technical experts. SCILLC does not convey any license under its patent rights nor the rights of others. SCILLC products are not designed, intended, or authorized for use as components in systems intended for surgical implant into the body, or other applications intended to support or sustain life, or for any other application in which the failure of the SCILLC product could create a situation where personal injury or death may occur. Should Buyer purchase or use SCILLC products for any such unintended or unauthorized application, Buyer shall indemnify and hold SCILLC and its officers, employees, subsidiaries, affiliates, and distributors harmless against all claims, costs, damages, and expenses, and reasonable attorney fees arising out of, directly or indirectly, any claim of personal injury or death associated with such unintended or unauthorized use, even if such claim alleges that SCILLC was negligent regarding the design or manufacture of the part. SCILLC is an Equal Opportunity/Affirmative Action Employer. This literature is subject to all applicable copyright laws and is not for resale in any manner.

PUBLICATION ORDERING INFORMATION

LITERATURE FULFILLMENT:
Literature Distribution Center for ON Semiconductor
P.O. Box 5163, Denver, Colorado 80217 USA
Phone: 303-675-2175 or 800-344-3860 Toll Free USA/Canada
Fax: 303-675-2176 or 800-344-3867 Toll Free USA/Canada
Email: orderlit@onsemi.com

N. American Technical Support: 800-282-9855 Toll Free
USA/Canada
Europe, Middle East and Africa Technical Support:
Phone: 421 33 790 2910
Japan Customer Focus Center
Phone: 81-3-5817-1050

ON Semiconductor Website: www.onsemi.com
Order Literature: <http://www.onsemi.com/orderlit>

For additional information, please contact your local Sales Representative