

# 2N3634, 2N3634L, 2N3635, 2N3635L, 2N3636, 2N3636L, 2N3637, 2N3637L



ON Semiconductor®

<http://onsemi.com>

## Product Preview Low Power Transistors

### PNP Silicon

#### Features

- MIL-PRF-19500/357 Qualified
- Available as JAN, JANTX, JANTXV and JANHC

#### MAXIMUM RATINGS ( $T_A = 25^\circ\text{C}$ unless otherwise noted)

Characteristic	Symbol	2N3634/L 2N3635/L	2N3636/L 2N3637/L	Unit
Collector - Emitter Voltage	$V_{CE0}$	-140	-175	Vdc
Collector - Base Voltage	$V_{CBO}$	-140	-175	Vdc
Emitter - Base Voltage	$V_{EBO}$	-5.0		Vdc
Collector Current - Continuous	$I_C$	1.0		Adc
Total Device Dissipation @ $T_A = 25^\circ\text{C}$	$P_T$	1.0		W
Total Device Dissipation @ $T_C = 25^\circ\text{C}$	$P_T$	5.0		W
Operating and Storage Junction Temperature Range	$T_J, T_{stg}$	-65 to +200		$^\circ\text{C}$

#### THERMAL CHARACTERISTICS

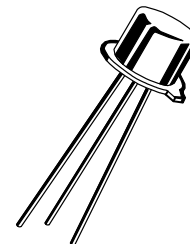
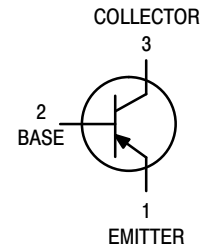
Characteristic	Symbol	Max	Unit
Thermal Resistance, Junction to Ambient	$R_{\theta JA}$	175	$^\circ\text{C}/\text{W}$
Thermal Resistance, Junction to Case	$R_{\theta JC}$	35	$^\circ\text{C}/\text{W}$

Stresses exceeding Maximum Ratings may damage the device. Maximum Ratings are stress ratings only. Functional operation above the Recommended Operating Conditions is not implied. Extended exposure to stresses above the Recommended Operating Conditions may affect device reliability.

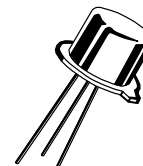
#### ORDERING INFORMATION

Level	Device	Package	Shipping
JAN JANTX JANTXV JANHC	2N3634	TO-39	Bulk
	2N3635		
	2N3636		
	2N3637		
	2N3634L	TO-5	Bulk
	2N3635L		
	2N3636L		
	2N3637L		

This document contains information on a product under development. ON Semiconductor reserves the right to change or discontinue this product without notice.



TO-5  
CASE 205AA  
STYLE 1  
2N3634L  
2N3635L  
2N3636L  
2N3637L



TO-39  
CASE 205AB  
STYLE 1  
2N3634  
2N3635  
2N3636  
2N3637

# 2N3634, 2N3634L, 2N3635, 2N3635L, 2N3636, 2N3636L, 2N3637, 2N3637L

## ELECTRICAL CHARACTERISTICS ( $T_A = 25^\circ\text{C}$ unless otherwise noted)

Characteristic	Symbol	Min	Max	Unit
<b>OFF CHARACTERISTICS</b>				
Collector-Emitter Breakdown Voltage ( $I_C = -10\text{ mA}$ )	$V_{(BR)CEO}$	-140 -175	-	V
Emitter-Base Cutoff Current ( $V_{EB} = -3.0\text{ V}$ ) ( $V_{EB} = -5.0\text{ V}$ )	$I_{EBO}$	-	-50 -10	nA $\mu\text{A}$
Collector-Emitter Cutoff Current ( $V_{CE} = -100\text{ V}$ )	$I_{CEO}$	-	-10	$\mu\text{A}$
Collector-Base Cutoff Current ( $V_{CB} = -100\text{ V}$ ) ( $V_{CB} = -140\text{ V}$ ) ( $V_{CB} = -175\text{ V}$ )	$I_{CBO}$	-	-100 -10 -10	nA $\mu\text{A}$ $\mu\text{A}$

## ON CHARACTERISTICS (Note 1)

DC Current Gain ( $I_C = -0.1\text{ mA}$ , $V_{CE} = -10\text{ V}$ ) ( $I_C = -1.0\text{ mA}$ , $V_{CE} = -10\text{ V}$ ) ( $I_C = -10\text{ mA}$ , $V_{CE} = -10\text{ V}$ ) ( $I_C = -50\text{ mA}$ , $V_{CE} = -10\text{ V}$ ) ( $I_C = -150\text{ mA}$ , $V_{CE} = -10\text{ V}$ )	2N3634, 2N3636	$h_{FE}$	25 45 50 50 30	-	-
DC Current Gain ( $I_C = -0.1\text{ mA}$ , $V_{CE} = -10\text{ V}$ ) ( $I_C = -1.0\text{ mA}$ , $V_{CE} = -10\text{ V}$ ) ( $I_C = -10\text{ mA}$ , $V_{CE} = -10\text{ V}$ ) ( $I_C = -50\text{ mA}$ , $V_{CE} = -10\text{ V}$ ) ( $I_C = -150\text{ mA}$ , $V_{CE} = -10\text{ V}$ )	2N3635, 2N3637	$h_{FE}$	55 90 100 100 60	-	-
Collector-Emitter Saturation Voltage ( $I_C = -10\text{ mA}$ , $I_B = -1.0\text{ mA}$ ) ( $I_C = -50\text{ mA}$ , $I_B = -5.0\text{ mA}$ )		$V_{CE(sat)}$	-	-0.3 -0.6	V
Base-Emitter Saturation Voltage ( $I_C = -10\text{ mA}$ , $I_B = -1.0\text{ mA}$ ) ( $I_C = -50\text{ mA}$ , $I_B = -5.0\text{ mA}$ )		$V_{BE(sat)}$	-	-0.8 -0.9	V

## SMALL-SIGNAL CHARACTERISTICS

Magnitude of Small-Signal Current Gain ( $I_C = -30\text{ mA}$ , $V_{CE} = -30\text{ V}$ , $f = 100\text{ MHz}$ )	2N3634, 2N3636 2N3635, 2N3637	$ h_{fe} $	1.5 2.0	8.0 8.5	-
Small-Signal Current Gain ( $I_C = -10\text{ mA}$ , $V_{CE} = -10\text{ V}$ , $f = 1\text{ kHz}$ )	2N3634, 2N3636 2N3635, 2N3637	$h_{fe}$	40 80	160 320	-
Output Capacitance ( $V_{CB} = -20\text{ V}$ , $I_E = 0\text{ A}$ , $100\text{ kHz} \leq f \leq 1.0\text{ MHz}$ )		$C_{obo}$	-	10	pF
Input Capacitance ( $V_{EB} = -1.0\text{ V}$ , $I_C = 0\text{ A}$ , $100\text{ kHz} \leq f \leq 1.0\text{ MHz}$ )		$C_{ibo}$	-	75	pF
Noise Figure ( $V_{CE} = -10\text{ V}$ , $I_C = -0.5\text{ mA}$ , $R_g = 1\text{ k}\Omega$ , $f = 100\text{ Hz}$ ) ( $V_{CE} = -10\text{ V}$ , $I_C = -0.5\text{ mA}$ , $R_g = 1\text{ k}\Omega$ , $f = 1.0\text{ kHz}$ ) ( $V_{CE} = -10\text{ V}$ , $I_C = -0.5\text{ mA}$ , $R_g = 1\text{ k}\Omega$ , $f = 10\text{ kHz}$ )		NF	-	5.0 3.0 3.0	dB

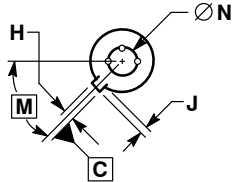
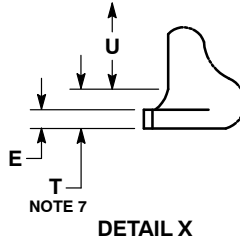
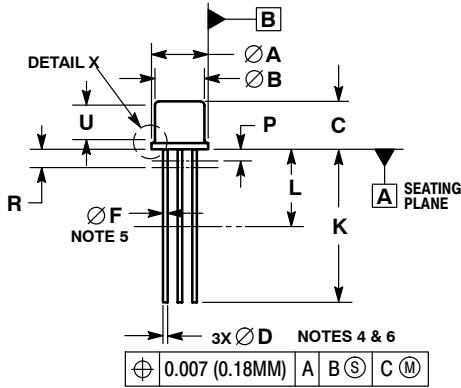
## SWITCHING CHARACTERISTICS

Delay Time (Reference Figure 11 in MIL-PRF-19500/357)	$t_d$	-	100	ns
Rise Time (Reference Figure 11 in MIL-PRF-19500/357)	$t_r$	-	100	ns
Storage Time (Reference Figure 11 in MIL-PRF-19500/357)	$t_s$	-	500	ns
Fall Time (Reference Figure 11 in MIL-PRF-19500/357)	$t_f$	-	150	ns
Turn-Off Time (Reference Figure 11 in MIL-PRF-19500/357)	$t_{off}$	-	600	ns

1. Pulse Test: Pulse Width = 300  $\mu\text{s}$ , Duty Cycle  $\leq 2.0\%$ .

PACKAGE DIMENSIONS

TO-5 3-Lead  
CASE 205AA  
ISSUE B



NOTES:

1. DIMENSIONING AND TOLERANCING PER ASME Y14.5M, 1994.
2. CONTROLLING DIMENSION: INCHES.
3. DIMENSION J MEASURED FROM DIAMETER A TO EDGE.
4. LEAD TRUE POSITION TO BE DETERMINED AT THE GAUGE PLANE DEFINED BY DIMENSION R.
5. DIMENSION F APPLIES BETWEEN DIMENSION P AND L.
6. DIMENSION D APPLIES BETWEEN DIMENSION L AND K.
7. BODY CONTOUR OPTIONAL WITHIN ZONE DEFINED BY DIMENSIONS A, B, AND T.
8. DIMENSION B SHALL NOT VARY MORE THAN 0.010 IN ZONE P.

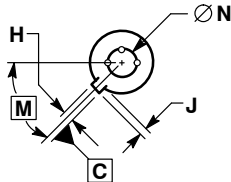
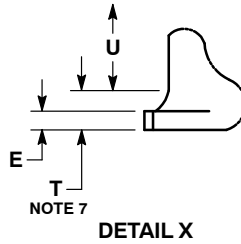
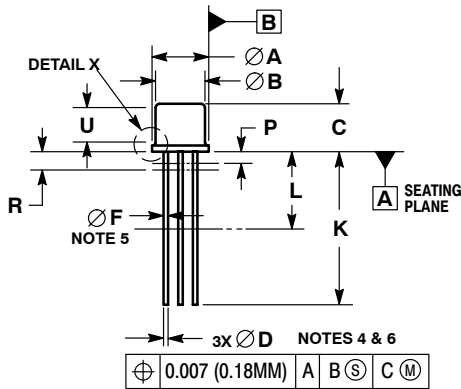
DIM	MILLIMETERS		INCHES	
	MIN	MAX	MIN	MAX
A	8.89	9.40	0.350	0.370
B	8.00	8.51	0.315	0.335
C	6.10	6.60	0.240	0.260
D	0.41	0.53	0.016	0.021
E	0.23	3.18	0.009	0.125
F	0.41	0.48	0.016	0.019
H	0.71	0.86	0.028	0.034
J	0.73	1.02	0.029	0.040
K	38.10	44.45	1.500	1.750
L	6.35	---	0.250	---
M	45° BSC		45° BSC	
N	5.08 BSC		0.200 BSC	
P	---	1.27	---	0.050
R	1.37 BSC		0.054 BSC	
T	---	0.76	---	0.030
U	2.54	---	0.100	---

STYLE 1:

1. EMITTER
2. BASE
3. COLLECTOR

PACKAGE DIMENSIONS

TO-39 3-Lead  
CASE 205AB  
ISSUE A



NOTES:

1. DIMENSIONING AND TOLERANCING PER ASME Y14.5M, 1994.
2. CONTROLLING DIMENSION: INCHES.
3. DIMENSION J MEASURED FROM DIAMETER A TO EDGE.
4. LEAD TRUE POSITION TO BE DETERMINED AT THE GAUGE PLANE DEFINED BY DIMENSION R.
5. DIMENSION F APPLIES BETWEEN DIMENSION P AND L.
6. DIMENSION D APPLIES BETWEEN DIMENSION L AND K.
7. BODY CONTOUR OPTIONAL WITHIN ZONE DEFINED BY DIMENSIONS A, B, AND T.
8. DIMENSION B SHALL NOT VARY MORE THAN 0.010 IN ZONE P.

DIM	MILLIMETERS		INCHES	
	MIN	MAX	MIN	MAX
A	8.89	9.40	0.350	0.370
B	8.00	8.51	0.315	0.335
C	6.10	6.60	0.240	0.260
D	0.41	0.48	0.016	0.019
E	0.23	3.18	0.009	0.125
F	0.41	0.48	0.016	0.019
H	0.71	0.86	0.028	0.034
J	0.73	1.02	0.029	0.040
K	12.70	14.73	0.500	0.580
L	6.35	---	0.250	---
M	---	---	45° BSC	45° BSC
N	---	---	5.08 BSC	0.200 BSC
P	---	1.27	---	0.050
R	---	1.37 BSC	---	0.054 BSC
T	---	0.76	---	0.030
U	2.54	---	0.100	---

STYLE 1:

1. PIN 1. EMITTER
2. BASE
3. COLLECTOR

**ON Semiconductor** and **ON** are registered trademarks of Semiconductor Components Industries, LLC (SCILLC). SCILLC owns the rights to a number of patents, trademarks, copyrights, trade secrets, and other intellectual property. A listing of SCILLC's product/patent coverage may be accessed at [www.onsemi.com/site/pdf/Patent-Marking.pdf](http://www.onsemi.com/site/pdf/Patent-Marking.pdf). SCILLC reserves the right to make changes without further notice to any products herein. SCILLC makes no warranty, representation or guarantee regarding the suitability of its products for any particular purpose, nor does SCILLC assume any liability arising out of the application or use of any product or circuit, and specifically disclaims any and all liability, including without limitation special, consequential or incidental damages. "Typical" parameters which may be provided in SCILLC data sheets and/or specifications can and do vary in different applications and actual performance may vary over time. All operating parameters, including "Typicals" must be validated for each customer application by customer's technical experts. SCILLC does not convey any license under its patent rights nor the rights of others. SCILLC products are not designed, intended, or authorized for use as components in systems intended for surgical implant into the body, or other applications intended to support or sustain life, or for any other application in which the failure of the SCILLC product could create a situation where personal injury or death may occur. Should Buyer purchase or use SCILLC products for any such unintended or unauthorized application, Buyer shall indemnify and hold SCILLC and its officers, employees, subsidiaries, affiliates, and distributors harmless against all claims, costs, damages, and expenses, and reasonable attorney fees arising out of, directly or indirectly, any claim of personal injury or death associated with such unintended or unauthorized use, even if such claim alleges that SCILLC was negligent regarding the design or manufacture of the part. SCILLC is an Equal Opportunity/Affirmative Action Employer. This literature is subject to all applicable copyright laws and is not for resale in any manner.

PUBLICATION ORDERING INFORMATION

**LITERATURE FULFILLMENT:**  
Literature Distribution Center for ON Semiconductor  
P.O. Box 5163, Denver, Colorado 80217 USA  
**Phone:** 303-675-2175 or 800-344-3860 Toll Free USA/Canada  
**Fax:** 303-675-2176 or 800-344-3867 Toll Free USA/Canada  
**Email:** [orderlit@onsemi.com](mailto:orderlit@onsemi.com)

**N. American Technical Support:** 800-282-9855 Toll Free  
USA/Canada  
**Europe, Middle East and Africa Technical Support:**  
Phone: 421 33 790 2910  
**Japan Customer Focus Center**  
Phone: 81-3-5817-1050

**ON Semiconductor Website:** [www.onsemi.com](http://www.onsemi.com)  
**Order Literature:** <http://www.onsemi.com/orderlit>  
For additional information, please contact your local Sales Representative