

0.05 $\mu\text{V}/^\circ\text{C}$ MAX, SINGLE-SUPPLY CMOS OPERATIONAL AMPLIFIER ZERO-DRIFT SERIES

FEATURES

- **Low Offset Voltage:** 5 μV (max)
- **Zero Drift:** 0.02 $\mu\text{V}/^\circ\text{C}$ (typ)
- **Quiescent Current:** 570 μA
- **Single-Supply Operation**
- **Ceramic DIP Package**

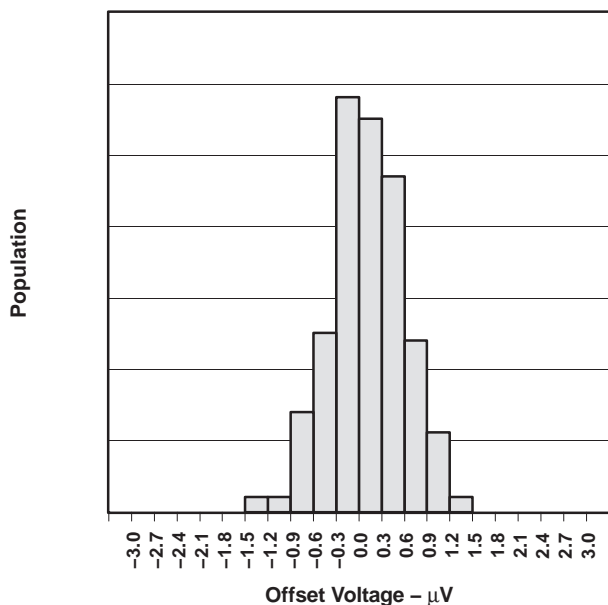
APPLICATIONS

- **Transducer Applications**
- **Temperature Measurement**
- **Electronic Scales**
- **Medical Instrumentation**
- **Battery-Powered Instruments**
- **Handheld Test Equipment**

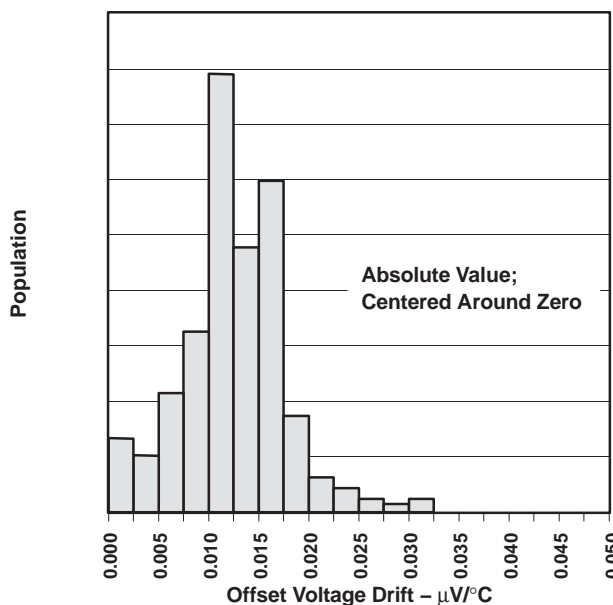
DESCRIPTION

The OPA2335 CMOS operational amplifier uses auto-zeroing techniques to simultaneously provide very low offset voltage (5 μV max), and near-zero drift over time and temperature. This high-precision, low quiescent current amplifier offers high input impedance and rail-to-rail output swing. Single or dual supplies as low as 2.7 V (± 1.35 V) and up to 5.5 V (± 2.75 V) may be used. This op amp is optimized for low-voltage, single-supply operation.

The OPA2335 is available in a CDIP-8 package and is specified for operation from -55°C to 125°C .



G001



G002



Please be aware that an important notice concerning availability, standard warranty, and use in critical applications of Texas Instruments semiconductor products and disclaimers thereto appears at the end of this data sheet.



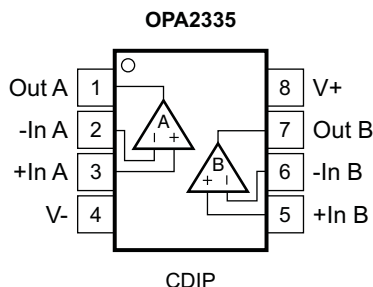
This integrated circuit can be damaged by ESD. Texas Instruments recommends that all integrated circuits be handled with appropriate precautions. Failure to observe proper handling and installation procedures can cause damage.

ESD damage can range from subtle performance degradation to complete device failure. Precision integrated circuits may be more susceptible to damage because very small parametric changes could cause the device not to meet its published specifications.

PACKAGE/ORDERING INFORMATION

PRODUCT	PACKAGE LEAD	PACKAGE DESIGNATOR	SPECIFIED TEMPERATURE RANGE	PACKAGE MARKING	ORDERING NUMBER
OPA2335	CDIP-8	JG	–55°C to 125°C	OPA2335AMJG	OPA2335AMJG

PIN CONFIGURATIONS



P0037-01

ABSOLUTE MAXIMUM RATINGS⁽¹⁾

over operating free-air temperature range (unless otherwise noted)

	VALUE	UNIT
Supply voltage	7 V	
Signal input terminals	Voltage ⁽²⁾	–0.5 to (V+) + 0.5
	Current ⁽²⁾	±10
Output short circuit ⁽³⁾	Continuous	
Operating temperature T _A	–55 to 150	°C
Storage temperature T _A	–65 to 150	°C
Junction temperature	150	°C
Lead temperature (soldering, 10s)	300	°C

- (1) Stresses above these ratings may cause permanent damage. Exposure to absolute maximum conditions for extended periods may degrade device reliability. These are stress ratings only, and functional operation of the device at these, or any other conditions beyond those specified, is not implied.
- (2) Input terminals are diode-clamped to the power-supply rails. Input signals that can swing more than 0.5 V beyond the supply rails should be current-limited to 10 mA or less.
- (3) Short-circuit to ground, one amplifier per package

ELECTRICAL CHARACTERISTICS

At T_A = 25°C, V_S = +5 V, R_L = 10 kΩ connected to V_S/2, and V_{OUT} = V_S/2 (unless otherwise noted)

PARAMETER	TEST CONDITIONS		MIN	TYP	MAX	UNIT
OFFSET VOLTAGE						
Input offset voltage	V _{OS}	V _{CM} = V _S /2	T _A = 25°C	1	5	μV
				T _A = Full range		
vs Temperature	dV _{OS} /dT			±0.02		μV/°C

ELECTRICAL CHARACTERISTICS (continued)

At $T_A = 25^\circ\text{C}$, $V_S = +5\text{ V}$, $R_L = 10\text{ k}\Omega$ connected to $V_S/2$, and $V_{OUT} = V_S/2$ (unless otherwise noted)

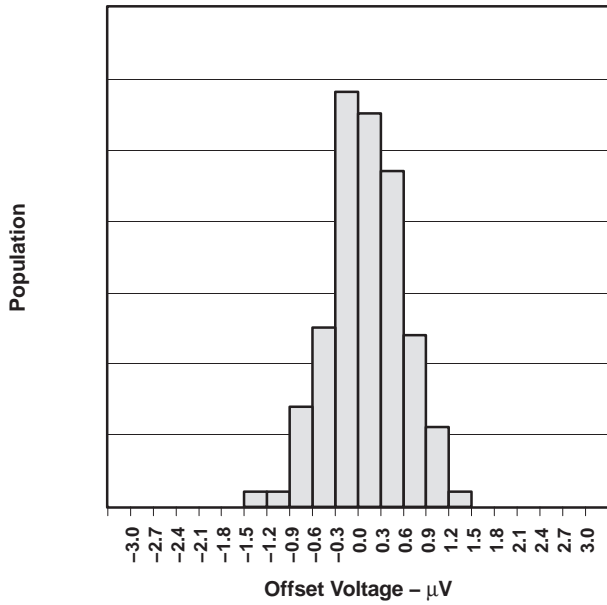
PARAMETER		TEST CONDITIONS		MIN	TYP	MAX	UNIT
vs Power supply	PSSR	$V_S = 2.7\text{ V to }5.5\text{ V}$	$T_A = \text{Full range}$		± 1	± 2	$\mu\text{V/V}$
Long-term stability				See Note (1)			
Channel separation, dc					0.1		$\mu\text{V/V}$
INPUT BIAS CURRENT							
Input bias current	I_B	$V_{CM} = V_S/2$	$T_A = 25^\circ\text{C}$		± 70	± 200	μA
			$T_A = \text{Full range}$		1		nA
Input offset current	I_{OS}				± 120	± 400	μA
NOISE							
Input voltage noise	e_n	$f = 0.01\text{ Hz to }10\text{ Hz}$			1.4		μVpp
Input current noise density	i_n	$f = 10\text{ Hz}$			20		$\text{fA}/\sqrt{\text{Hz}}$
INPUT VOLTAGE RANGE							
Common-mode voltage range	V_{CM}			$(V_-) - 0.1$		$(V_+) - 1.5$	V
Common-mode rejection ratio	CMRR	$(V_-) - 0.1\text{ V} < V_{CM} < (V_+) - 1.5\text{ V}$	$T_A = 25^\circ\text{C}$	110	130		dB
		$(V_-) < V_{CM} < (V_+) - 1.5\text{ V}$	$T_A = \text{Full range}$	110	130		dB
INPUT CAPACITANCE							
Differential					1		pF
Common-mode					5		pF
OPEN-LOOP GAIN							
Open-loop voltage gain	A_{OL}	$50\text{ mV} < V_O < (V_+) - 50\text{ mV}$, $R_L = 100\text{ k}\Omega$, $V_{CM} = V_S/2$	$T_A = \text{Full range}$	110	130		dB
		$100\text{ mV} < V_O < (V_+) - 100\text{ mV}$, $R_L = 10\text{ k}\Omega$, $V_{CM} = V_S/2$	$T_A = \text{Full range}$	110	130		dB
FREQUENCY RESPONSE							
Gain-Bandwidth Product	GBW				2		MHz
Slew Rate	SR	$G = +1$			1.6		$\text{V}/\mu\text{s}$
OUTPUT							
Voltage output swing from rail		$R_L = 10\text{ k}\Omega$	$T_A = \text{Full range}$		15	100	mV
		$R_L = 100\text{ k}\Omega$	$T_A = \text{Full range}$		1	50	mV
Short-circuit current	I_{SC}				± 50		mA
Capacitive load drive	C_{LOAD}			See Typical Characteristics			
POWER SUPPLY							
Operating voltage range				2.7		5.5	V
Quiescent current (total-2 amplifiers)	I_Q	$I_O = 0$, $V_S = +5\text{ V}$	$T_A = 25^\circ\text{C}$		570	700	μA
			$T_A = \text{Full range}$			900	μA
TEMPERATURE RANGE							
Operating range	T_A			-55		125	$^\circ\text{C}$
Storage range				-65		150	$^\circ\text{C}$
Thermal resistance	θ_{JA}				119		$^\circ\text{C}/\text{W}$

(1) 500-hour life test at 150°C demonstrated randomly distributed variation approximately equal to measurement repeatability of $1\ \mu\text{V}$.

TYPICAL CHARACTERISTICS

At $T_A = 25^\circ\text{C}$, $V_S = +5\text{ V}$, $R_L = 10\text{ k}\Omega$ connected to $V_S/2$ and $V_{OUT} = V_S/2$ (unless otherwise noted)

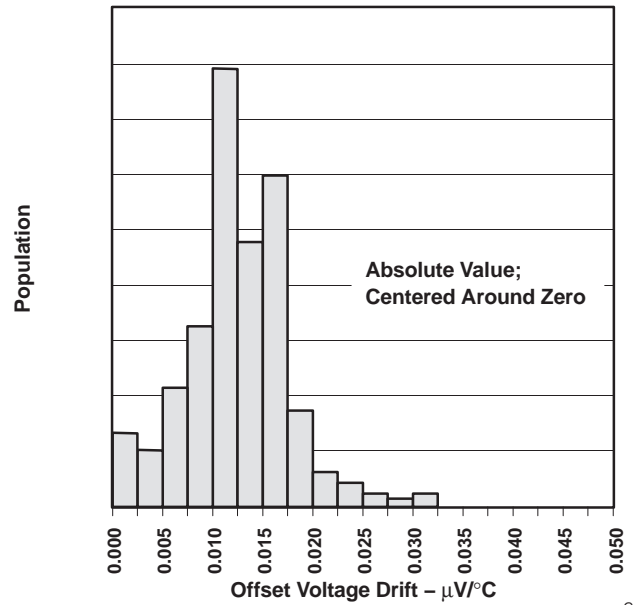
OFFSET VOLTAGE PRODUCTION DISTRIBUTION



G001

Figure 1.

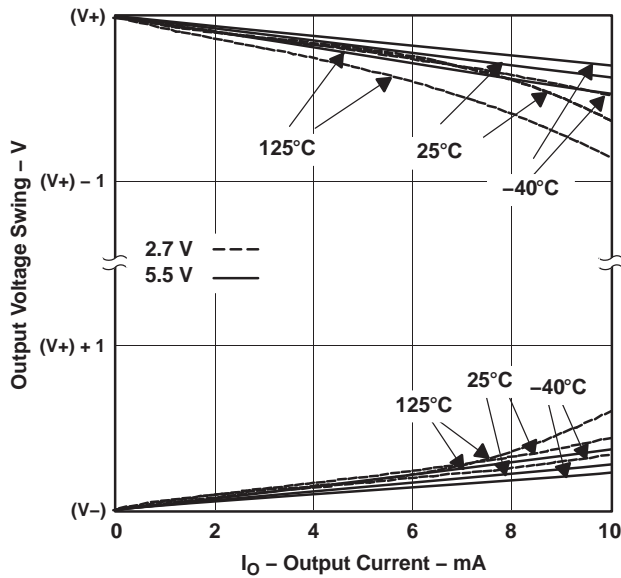
OFFSET VOLTAGE DRIFT PRODUCTION DISTRIBUTION



G002

Figure 2.

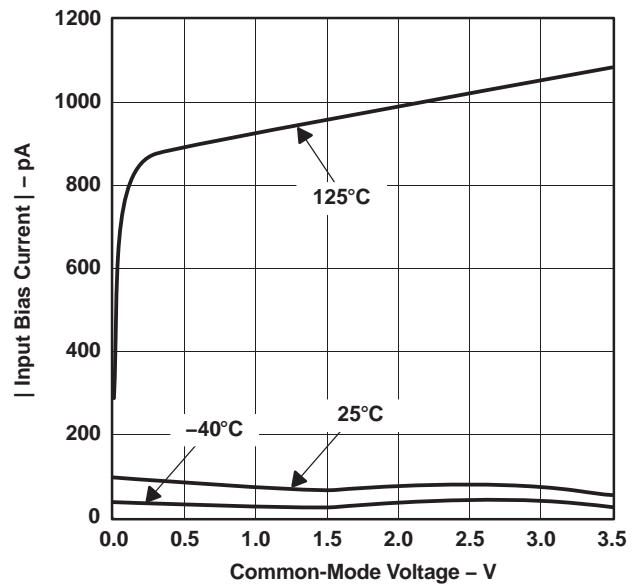
**OFFSET VOLTAGE SWING
vs
OUTPUT CURRENT**



G003

Figure 3.

**INPUT BIAS CURRENT
vs
COMMON-MODE VOLTAGE**



G004

Figure 4.

TYPICAL CHARACTERISTICS (continued)

At $T_A = 25^\circ\text{C}$, $V_S = +5\text{ V}$, $R_L = 10\text{ k}\Omega$ connected to $V_S/2$ and $V_{OUT} = V_S/2$ (unless otherwise noted)

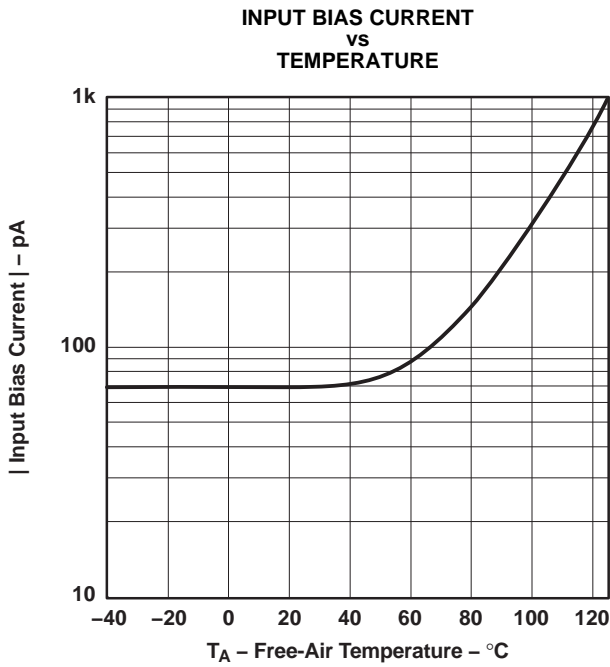


Figure 5.

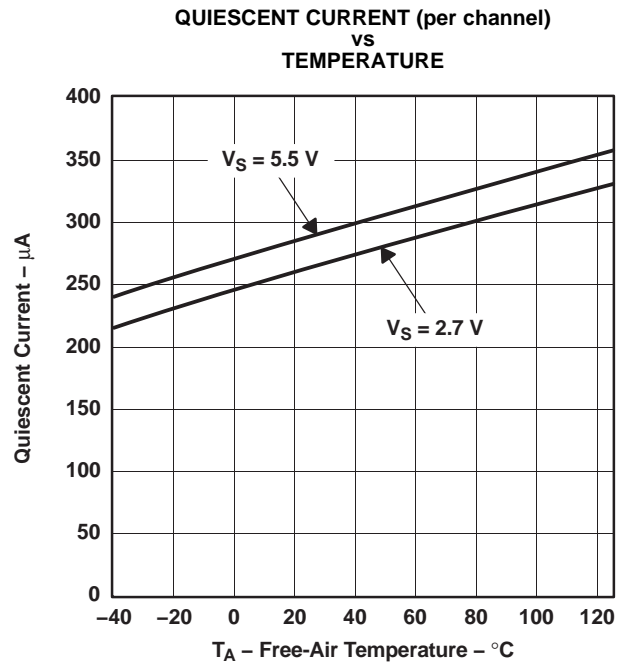


Figure 6.

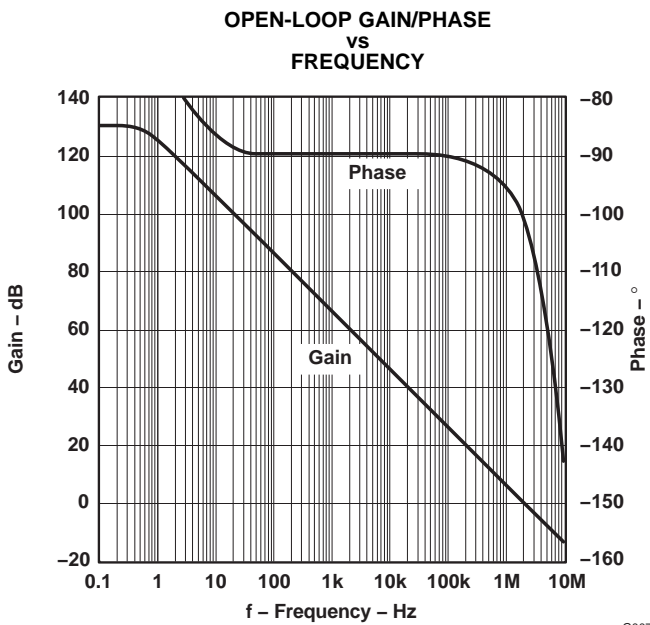


Figure 7.

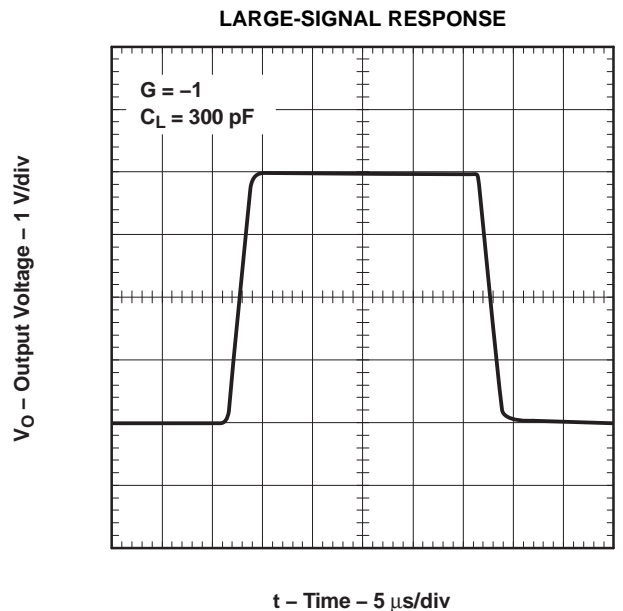


Figure 8.

TYPICAL CHARACTERISTICS (continued)

At $T_A = 25^\circ\text{C}$, $V_S = +5\text{ V}$, $R_L = 10\text{ k}\Omega$ connected to $V_S/2$ and $V_{OUT} = V_S/2$ (unless otherwise noted)

SMALL-SIGNAL RESPONSE

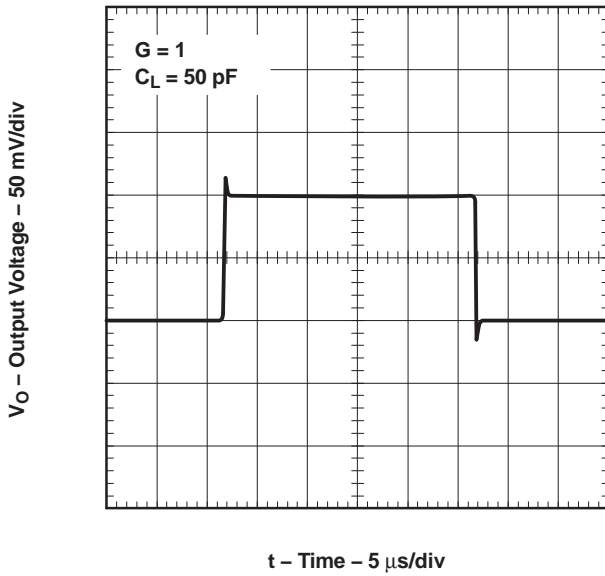


Figure 9.

G009

POSITIVE OVER-VOLTAGE RECOVERY

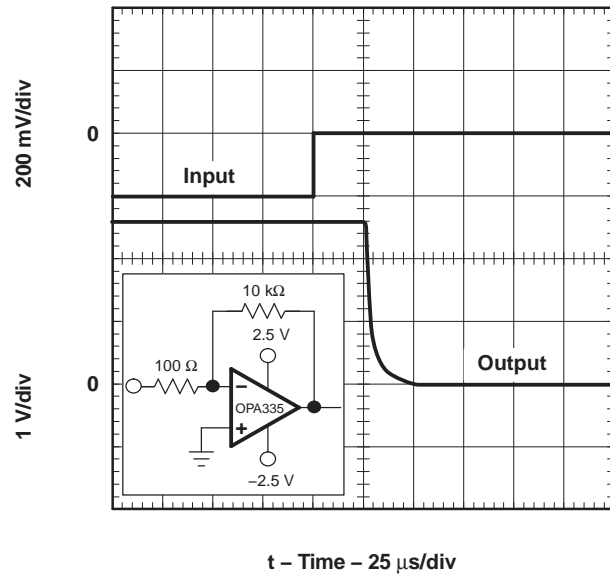


Figure 10.

G010

NEGATIVE OVER-VOLTAGE RECOVERY

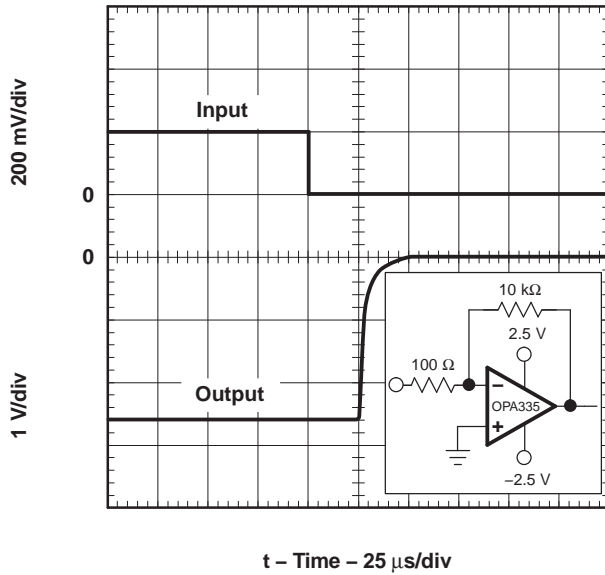


Figure 11.

G011

**COMMON-MODE REJECTION
VS
FREQUENCY**

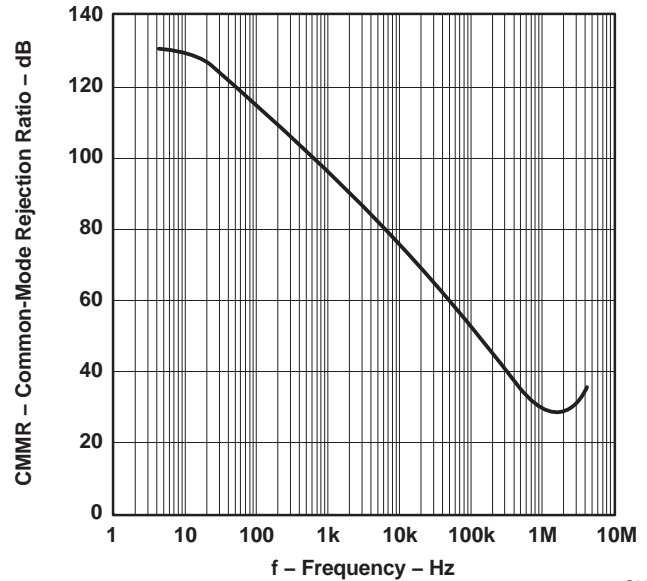


Figure 12.

G012

TYPICAL CHARACTERISTICS (continued)

At $T_A = 25^\circ\text{C}$, $V_S = +5\text{ V}$, $R_L = 10\text{ k}\Omega$ connected to $V_S/2$ and $V_{OUT} = V_S/2$ (unless otherwise noted)

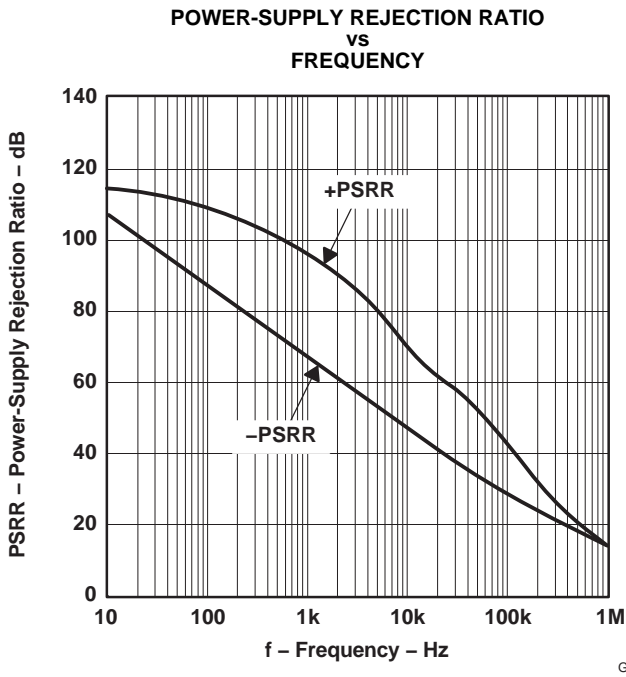


Figure 13.

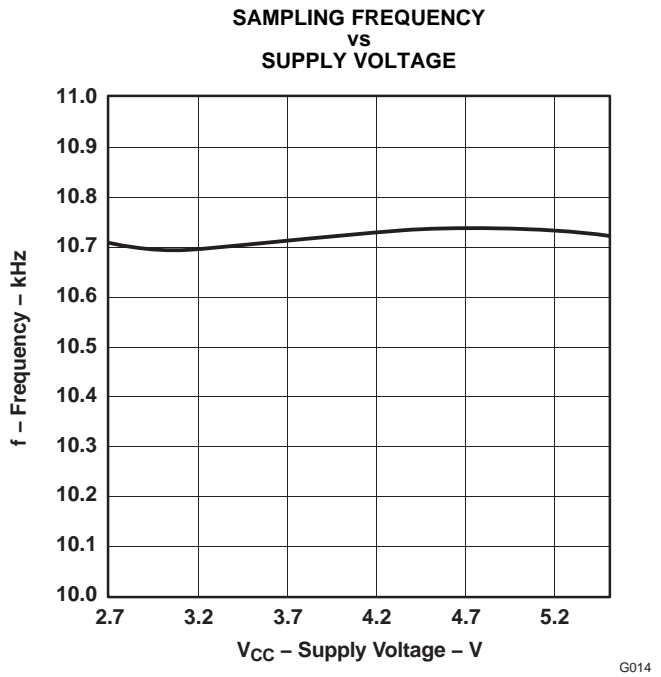


Figure 14.

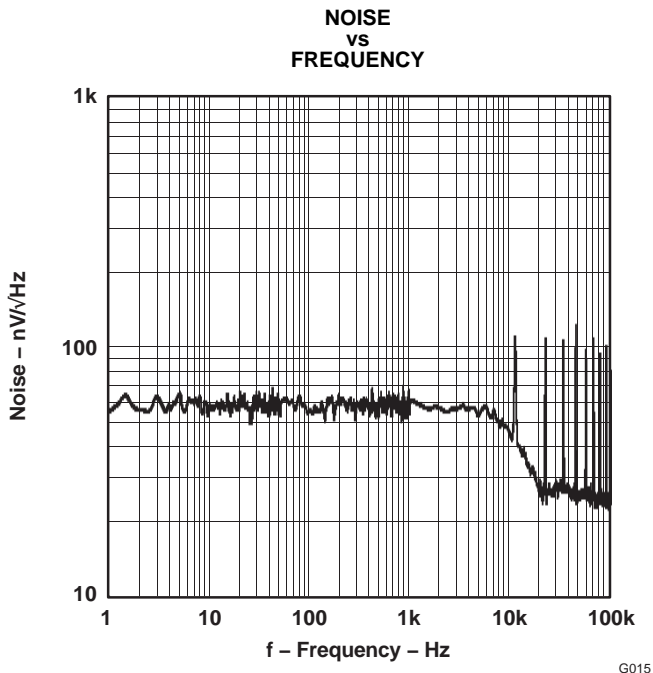


Figure 15.

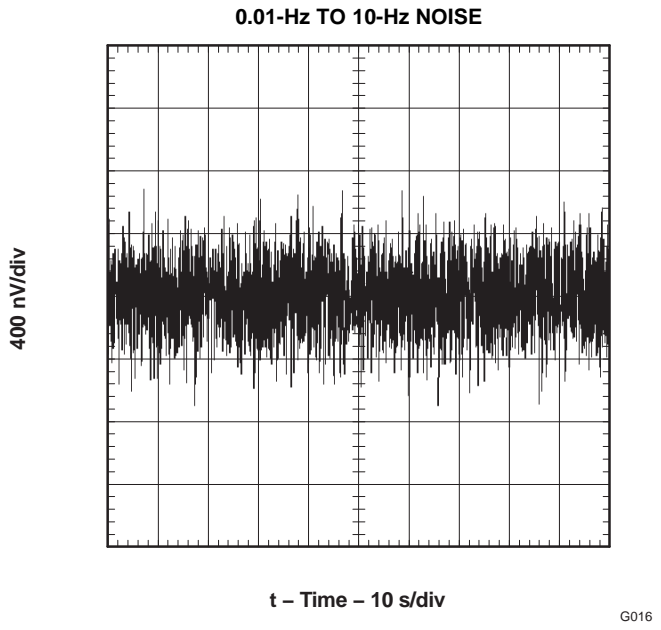


Figure 16.

TYPICAL CHARACTERISTICS (continued)

At $T_A = 25^\circ\text{C}$, $V_S = +5\text{ V}$, $R_L = 10\text{ k}\Omega$ connected to $V_S/2$ and $V_{OUT} = V_S/2$ (unless otherwise noted)

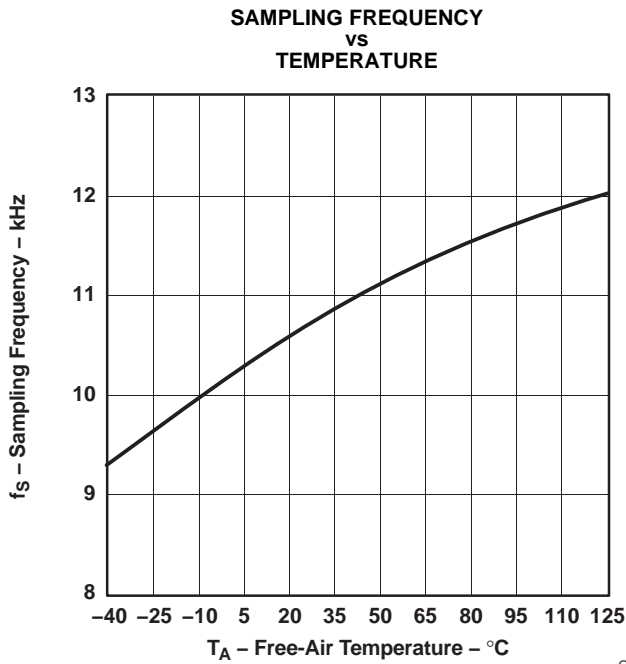


Figure 17.

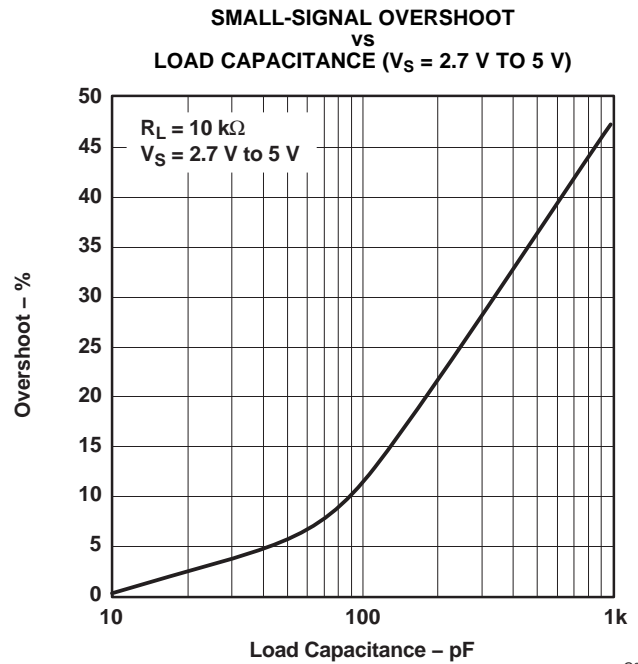


Figure 18.

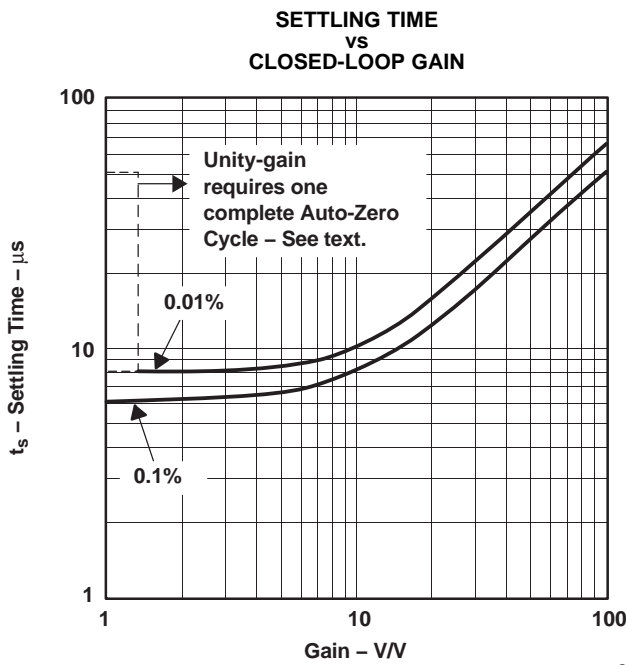


Figure 19.

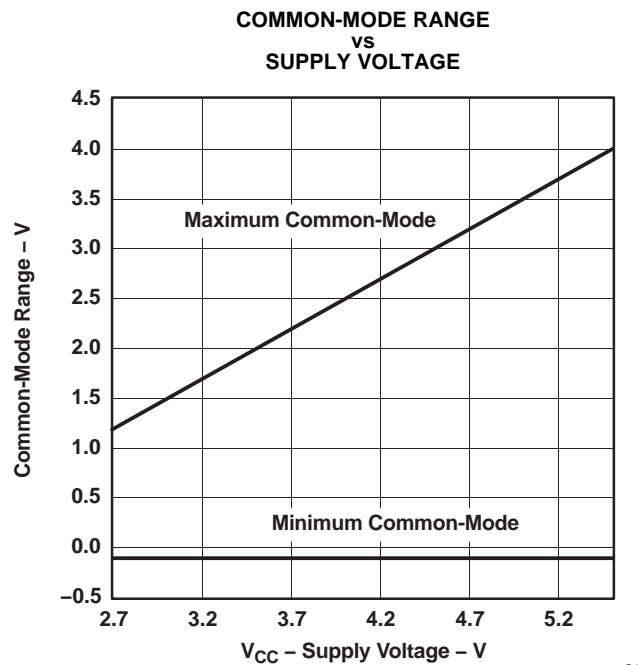


Figure 20.

APPLICATION INFORMATION

The OPA2335 op amp is unity-gain stable and free from unexpected output phase reversal. It uses auto-zeroing techniques to provide low offset voltage and very low drift over time and temperature.

Good layout practice mandates use of a 0.1- μ F capacitor placed closely across the supply pins.

For lowest offset voltage and precision performance, circuit layout and mechanical conditions should be optimized. Avoid temperature gradients that create thermoelectric (Seebeck) effects in thermocouple junctions formed from connecting dissimilar conductors. These thermally-generated potentials can be made to cancel by assuring that they are equal on both input terminals.

- Use low thermoelectric-coefficient connections (avoid dissimilar metals).
- Thermally isolate components from power supplies or other heat-sources.
- Shield op amp and input circuitry from air currents, such as cooling fans.

Following these guidelines will reduce the likelihood of junctions being at different temperatures, which can cause thermoelectric voltages of 0.1 μ V/ $^{\circ}$ C or higher, depending on materials used.

OPERATING VOLTAGE

The OPA2335 op amp operates over a power-supply range of 2.7 V to 5.5 V (± 1.35 V to ± 2.75 V). Supply voltages higher than 7 V (absolute maximum) can permanently damage the amplifier. Parameters that vary over supply voltage or temperature are shown in the Typical Characteristics section of this data sheet.

INPUT VOLTAGE

The input common-mode range extends from $(V-) - 0.1$ V to $(V+) - 1.5$ V. For normal operation, the inputs must be limited to this range. The common-mode rejection ratio is only valid within the valid input common-mode range. A lower supply voltage results in lower input common-mode range; therefore, attention to these values must be given when selecting the input bias voltage. For example, when operating on a single 3-V power supply, common-mode range is from 0.1 V below ground to half the power-supply voltage.

Normally, input bias current is approximately 70 pA; however, input voltages exceeding the power supplies can cause excessive current to flow in or out of the input pins. Momentary voltages greater than the power supply can be tolerated if the input current is limited to 10 mA. This is easily accomplished with an input resistor, as shown in Figure 21.

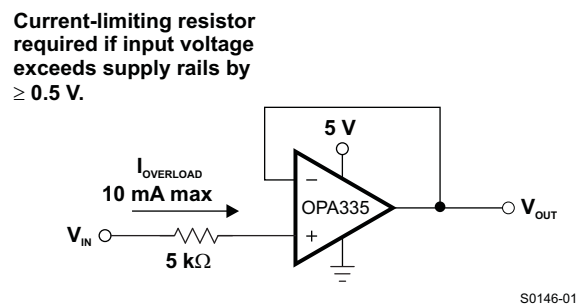


Figure 21. Input Current Protection

INTERNAL OFFSET CORRECTION

The OPA2335 op amp uses an auto-zero topology with a time-continuous 2-MHz op amp in the signal path. This amplifier is zero-corrected every 100 μ s using a proprietary technique. Upon power-up, the amplifier requires one full auto-zero cycle of approximately 100 μ s to achieve specified V_{OS} accuracy. Prior to this time, the amplifier functions properly, but with unspecified offset voltage.

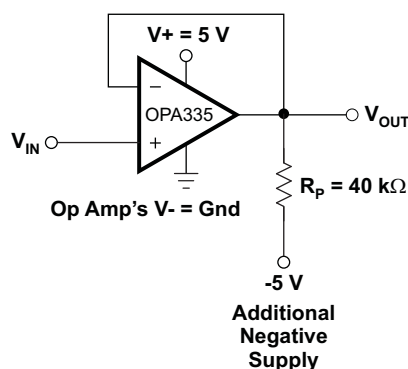
This design has remarkably little aliasing and noise. Zero correction occurs at a 10-kHz rate, but there is virtually no fundamental noise energy present at that frequency. For all practical purposes, any glitches have energy at 20 MHz or higher and are easily filtered, if required. Most applications are not sensitive to such high-frequency noise, and no filtering is required.

APPLICATION INFORMATION (continued)

Unity-gain operation demands that the auto-zero circuitry correct for common-mode rejection errors of the main amplifier. Because these errors can be larger than 0.01% of a full-scale input step change, one calibration cycle (100 μ s) can be required to achieve full accuracy. This behavior is shown in the typical characteristic section, see *Settling Time vs Closed-Loop Gain*.

ACHIEVING OUTPUT SWING TO THE OP AMP'S NEGATIVE RAIL

Some applications require output voltage swing from 0 V to a positive full-scale voltage (such as 2.5 V) with excellent accuracy. With most single-supply op amps, problems arise when the output signal approaches 0 V, near the lower output swing limit of a single-supply op amp. A good single-supply op amp may swing close to single-supply ground, but will not reach ground. The output of the OPA2335 can be made to swing to ground, or slightly below, on a single-supply power source. To do so requires use of another resistor and an additional, more negative, power supply than the op amp's negative supply. A pull-down resistor may be connected between the output and the additional negative supply to pull the output down below the value that the output would otherwise achieve, as shown in [Figure 22](#).



S0147-01

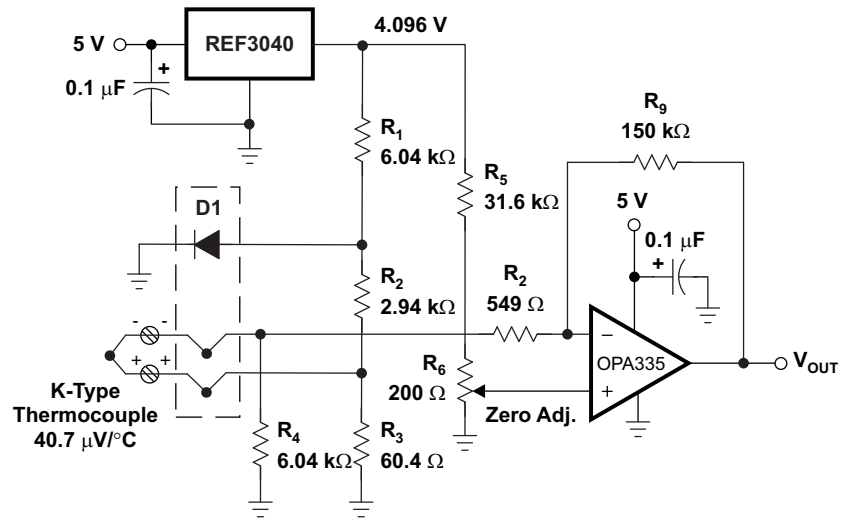
Figure 22. Op Amp With Pull-Down Resistor to Achieve $V_{OUT} = \text{Ground}$

The OPA2335 has an output stage that allows the output voltage to be pulled to its negative supply rail, or slightly below using the above technique. This technique only works with some types of output stages. The OPA2335 has been characterized to perform well with this technique. Accuracy is excellent down to 0 V and as low as -2 mV. Limiting and non-linearity occurs below -2 mV, but excellent accuracy returns as the output is again driven above -2 mV. Lowering the resistance of the pull-down resistor allows the op amp to swing even further below the negative rail. Resistances as low as 10 k Ω can be used to achieve excellent accuracy, down to -10 mV.

LAYOUT GUIDELINES

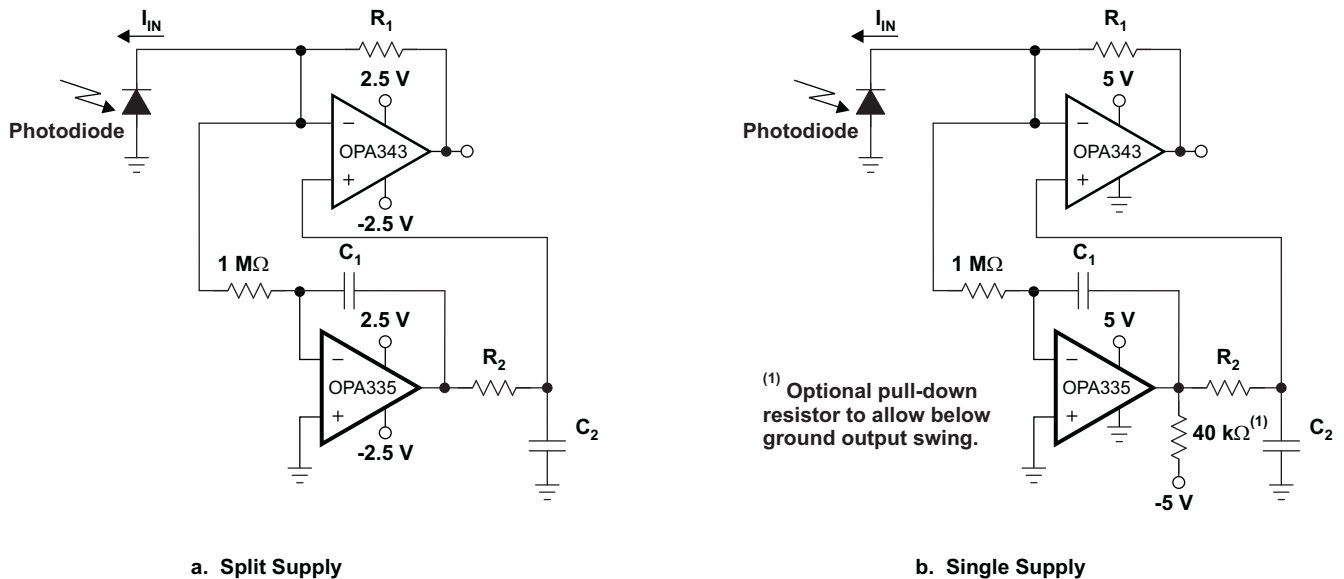
Attention to good layout practices is always recommended. Keep traces short. When possible, use a PCB ground plane with surface-mount components placed as close to the device pins as possible. Place a 0.1- μ F capacitor closely across the supply pins. These guidelines should be applied throughout the analog circuit to improve performance and provide benefits, such as reducing the EMI (electromagnetic-interference) susceptibility.

APPLICATION INFORMATION (continued)



S0148-01

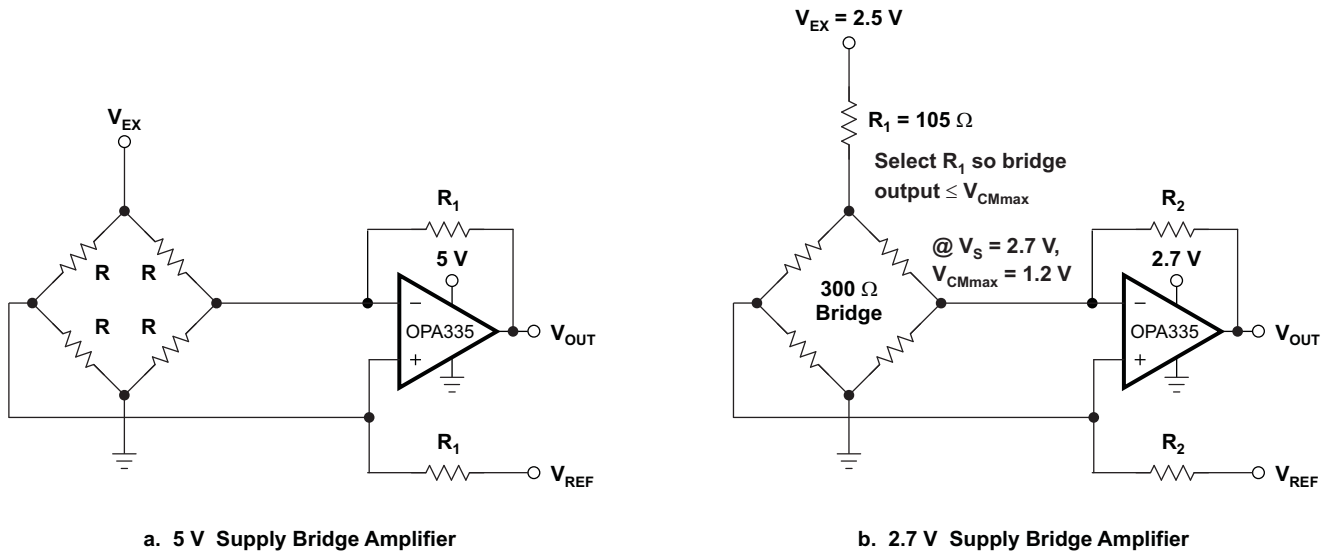
Figure 23. Temperature Measurement Circuit



S0149-01

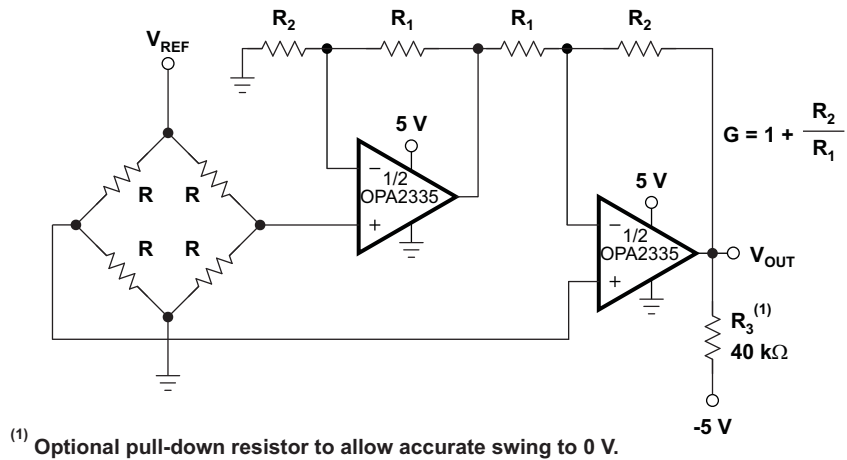
Figure 24. Auto-Zeroed Transimpedance Amplifier

APPLICATION INFORMATION (continued)



S0150-01

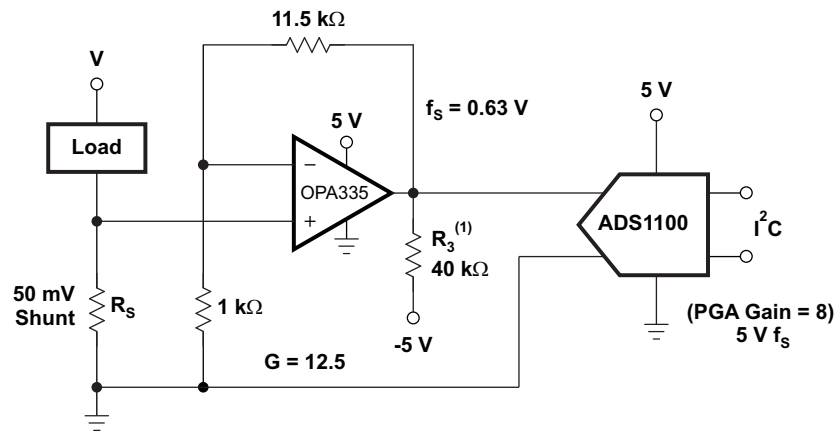
Figure 25. Single Op-Amp Bridge Amplifier Circuits



S0151-01

Figure 26. Dual Op-Amp IA Bridge Amplifier

APPLICATION INFORMATION (continued)

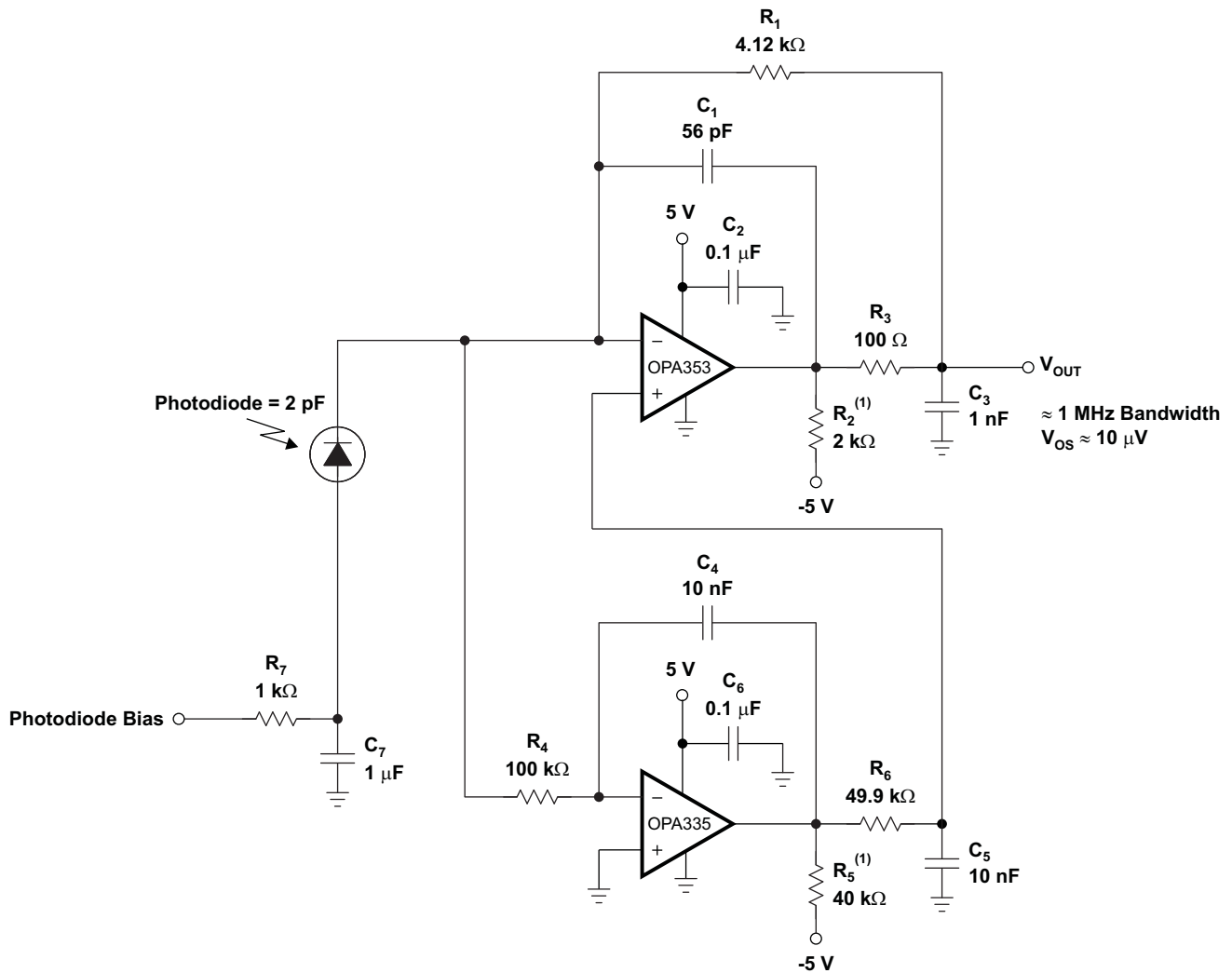


⁽¹⁾ Pull-down resistor to allow accurate swing to 0 V.

S0152-01

Figure 27. Low-Side Current Measurement

APPLICATION INFORMATION (continued)



≈ 1 MHz Bandwidth
V_{OS} ≈ 10 μV

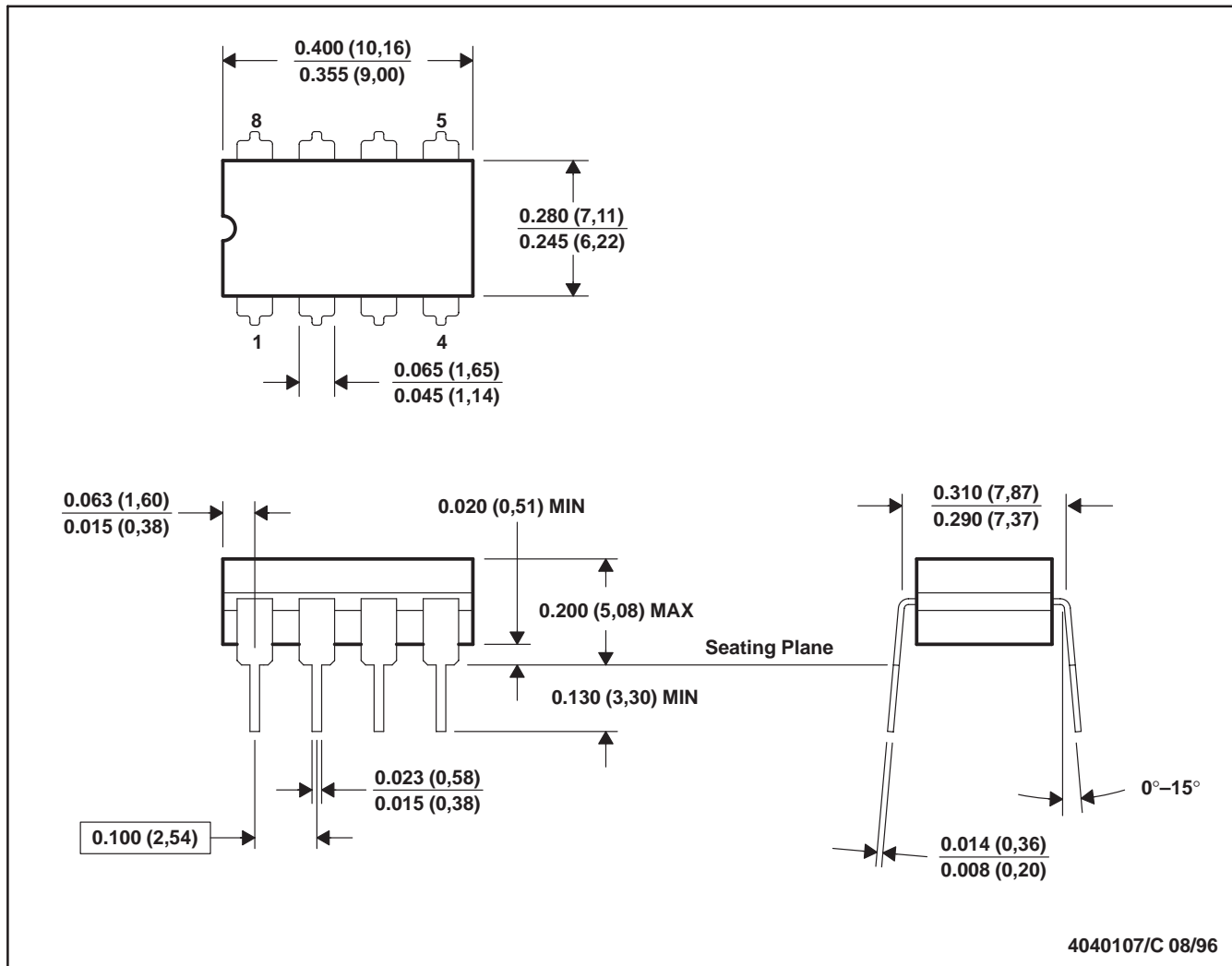
⁽¹⁾ Pull-down resistors to allow accurate swing to 0 V.

S0153-01

Figure 28. High Dynamic-Range Transimpedance Amplifier

JG (R-GDIP-T8)

CERAMIC DUAL-IN-LINE



- NOTES: A. All linear dimensions are in inches (millimeters).
 B. This drawing is subject to change without notice.
 C. This package can be hermetically sealed with a ceramic lid using glass frit.
 D. Index point is provided on cap for terminal identification.
 E. Falls within MIL STD 1835 GDIP1-T8

IMPORTANT NOTICE

Texas Instruments Incorporated and its subsidiaries (TI) reserve the right to make corrections, modifications, enhancements, improvements, and other changes to its products and services at any time and to discontinue any product or service without notice. Customers should obtain the latest relevant information before placing orders and should verify that such information is current and complete. All products are sold subject to TI's terms and conditions of sale supplied at the time of order acknowledgment.

TI warrants performance of its hardware products to the specifications applicable at the time of sale in accordance with TI's standard warranty. Testing and other quality control techniques are used to the extent TI deems necessary to support this warranty. Except where mandated by government requirements, testing of all parameters of each product is not necessarily performed.

TI assumes no liability for applications assistance or customer product design. Customers are responsible for their products and applications using TI components. To minimize the risks associated with customer products and applications, customers should provide adequate design and operating safeguards.

TI does not warrant or represent that any license, either express or implied, is granted under any TI patent right, copyright, mask work right, or other TI intellectual property right relating to any combination, machine, or process in which TI products or services are used. Information published by TI regarding third-party products or services does not constitute a license from TI to use such products or services or a warranty or endorsement thereof. Use of such information may require a license from a third party under the patents or other intellectual property of the third party, or a license from TI under the patents or other intellectual property of TI.

Reproduction of TI information in TI data books or data sheets is permissible only if reproduction is without alteration and is accompanied by all associated warranties, conditions, limitations, and notices. Reproduction of this information with alteration is an unfair and deceptive business practice. TI is not responsible or liable for such altered documentation. Information of third parties may be subject to additional restrictions.

Resale of TI products or services with statements different from or beyond the parameters stated by TI for that product or service voids all express and any implied warranties for the associated TI product or service and is an unfair and deceptive business practice. TI is not responsible or liable for any such statements.

TI products are not authorized for use in safety-critical applications (such as life support) where a failure of the TI product would reasonably be expected to cause severe personal injury or death, unless officers of the parties have executed an agreement specifically governing such use. Buyers represent that they have all necessary expertise in the safety and regulatory ramifications of their applications, and acknowledge and agree that they are solely responsible for all legal, regulatory and safety-related requirements concerning their products and any use of TI products in such safety-critical applications, notwithstanding any applications-related information or support that may be provided by TI. Further, Buyers must fully indemnify TI and its representatives against any damages arising out of the use of TI products in such safety-critical applications.

TI products are neither designed nor intended for use in military/aerospace applications or environments unless the TI products are specifically designated by TI as military-grade or "enhanced plastic." Only products designated by TI as military-grade meet military specifications. Buyers acknowledge and agree that any such use of TI products which TI has not designated as military-grade is solely at the Buyer's risk, and that they are solely responsible for compliance with all legal and regulatory requirements in connection with such use.

TI products are neither designed nor intended for use in automotive applications or environments unless the specific TI products are designated by TI as compliant with ISO/TS 16949 requirements. Buyers acknowledge and agree that, if they use any non-designated products in automotive applications, TI will not be responsible for any failure to meet such requirements.

Following are URLs where you can obtain information on other Texas Instruments products and application solutions:

Products

Amplifiers	amplifier.ti.com
Data Converters	dataconverter.ti.com
DSP	dsp.ti.com
Clocks and Timers	www.ti.com/clocks
Interface	interface.ti.com
Logic	logic.ti.com
Power Mgmt	power.ti.com
Microcontrollers	microcontroller.ti.com
RFID	www.ti-rfid.com
RF/IF and ZigBee® Solutions	www.ti.com/lprf

Applications

Audio	www.ti.com/audio
Automotive	www.ti.com/automotive
Broadband	www.ti.com/broadband
Digital Control	www.ti.com/digitalcontrol
Medical	www.ti.com/medical
Military	www.ti.com/military
Optical Networking	www.ti.com/opticalnetwork
Security	www.ti.com/security
Telephony	www.ti.com/telephony
Video & Imaging	www.ti.com/video
Wireless	www.ti.com/wireless

Mailing Address: Texas Instruments, Post Office Box 655303, Dallas, Texas 75265
Copyright © 2008, Texas Instruments Incorporated

www.BDTIC.com/TI