
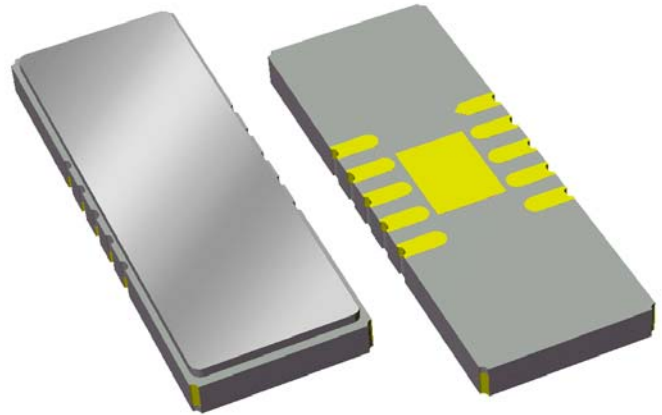


Data Sheet

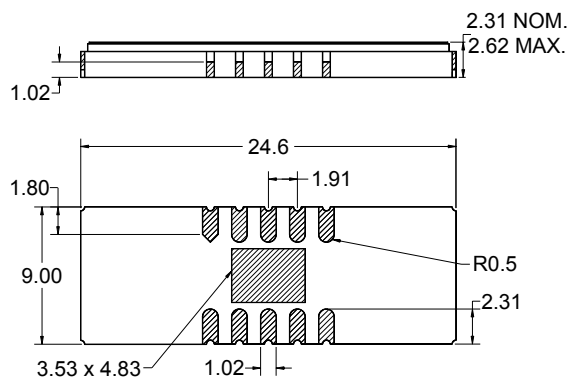
Features

- For broadband applications
- Typical 3dB bandwidth of 1 MHz
- High attenuation
- Single-ended operation
- Ceramic Surface Mount Package (SMP)
- Replaces Sawtek P/N 851545 (BW 3dB=1.5 MHz)
- Hermetic
- RoHS compliant (2002/95/EC), Pb-free 



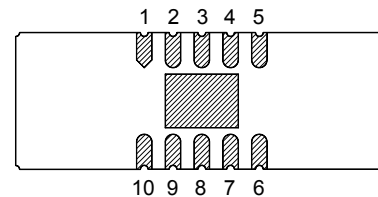
Package

Surface Mount 24.60 x 9.00 x 2.31 mm



Pin Configuration

Bottom View



Pin No.	Description
5	Output
10	Input
1,2,3,4	Case Ground
6,7,8,9	Case Ground

Dimensions shown are nominal in millimeters
All tolerances are ± 0.15 mm except overall
length ± 0.20 mm and width $+0.13/-0.20$ mm

Body: Al_2O_3 ceramic
Lid: Kovar, Ni plated
Terminations: Au plating 0.5 - 1.0 μ m,
over a 2 - 6 μ m Ni plating

Data Sheet

Electrical Specifications ⁽¹⁾

Operating Temperature Range: ⁽²⁾ 0 to +70 °C

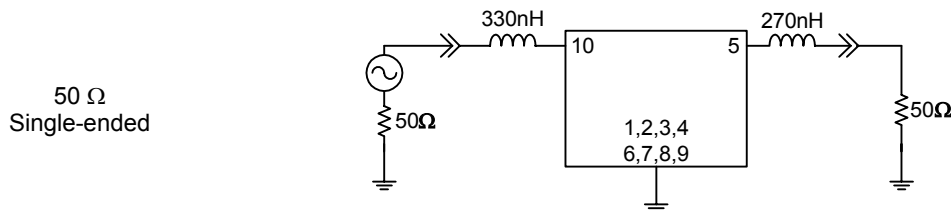
Parameter ⁽³⁾	Minimum	Typical	Maximum	Unit
Center Frequency	-	70	-	MHz
Minimum Insertion Loss	-	21.6	23	dB
Lower 1 dB Bandedge ⁽⁴⁾	-	69.30	69.35	MHz
Upper 1 dB Bandedge	70.65	70.70	-	MHz
Lower 3 dB Bandedge ⁽⁴⁾	-	69.18	69.22	MHz
Upper 3 dB Bandedge	70.78	70.81	-	MHz
Lower 40 dB Bandedge ⁽⁴⁾	68.71	68.74	-	MHz
Upper 40 dB Bandedge	-	71.26	71.29	MHz
Amplitude Variation 69.35 - 70.65 MHz	-	0.64	1	dB p-p
Phase Linearity 69.35 - 70.65 MHz	-	2.4	5	deg p-p
Group Delay Variation 69.35 - 70.65 MHz	-	97	200	nsec
Relative Attenuation ⁽⁴⁾				
10 - 68 MHz	50	64	-	dB
72 - 110 MHz	50	60	-	dB
110 - 118 MHz	30	35	-	dB
118 - 124 MHz	50	66	-	dB
124 - 133 MHz	30	37	-	dB
133 - 200 MHz	50	66	-	dB
Source Impedance ⁽⁵⁾	-	50	-	Ω
Load Impedance ⁽⁵⁾	-	50	-	Ω
Substrate Material	-	Quartz	-	-

Notes:

1. All specifications are based on the test circuit shown below
2. In production, devices will be tested at room temperature to a guardbanded specification to ensure electrical compliance over temperature
3. Electrical margin has been built into the design to account for the variations due to temperature drift and manufacturing tolerances
4. All attenuation measurements are measured relative to minimum insertion loss
5. This is the optimum impedance in order to achieve the performance shown

Test Circuit:

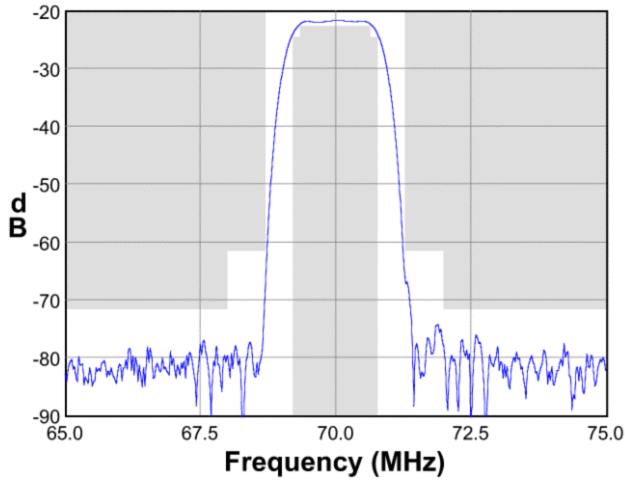
Actual matching values may vary due to PCB layout and parasitics



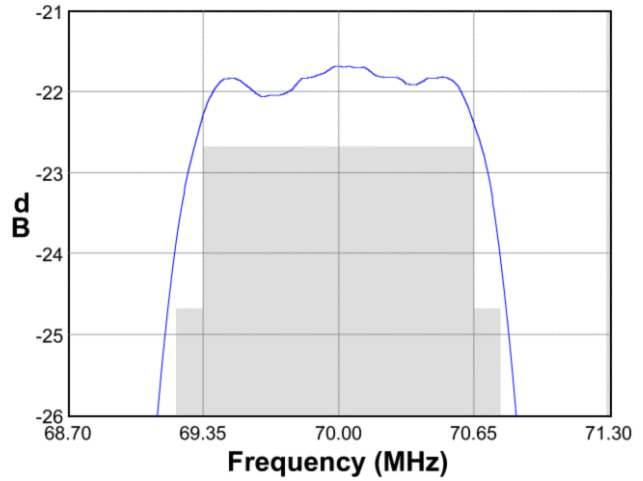
Data Sheet

Typical Performance (at +25°C)

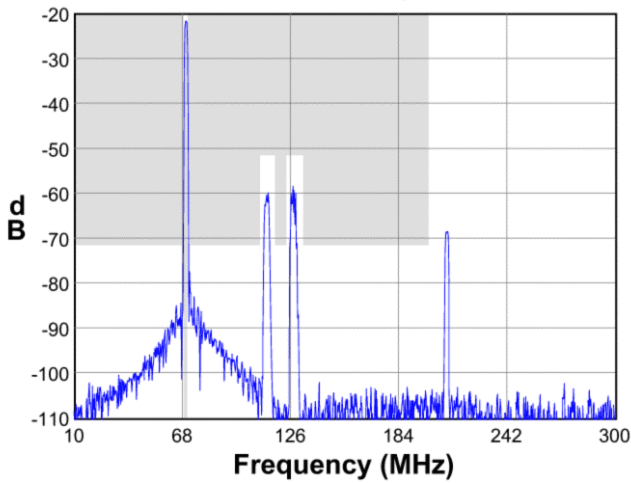
Frequency Response



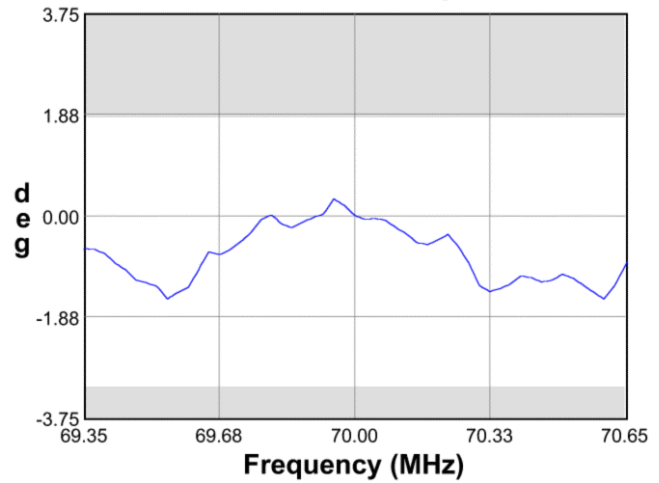
Passband Response



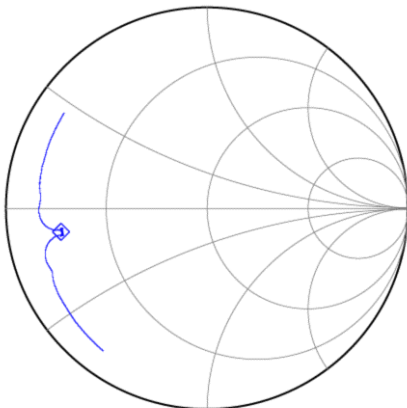
Wideband Response



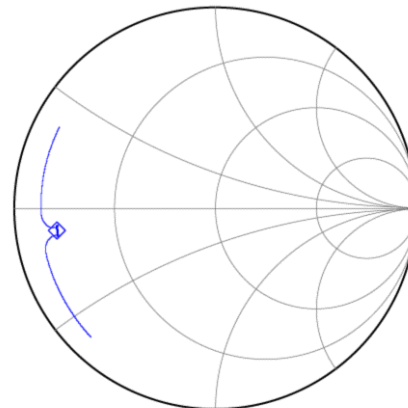
Phase Linearity



Input Smith Chart

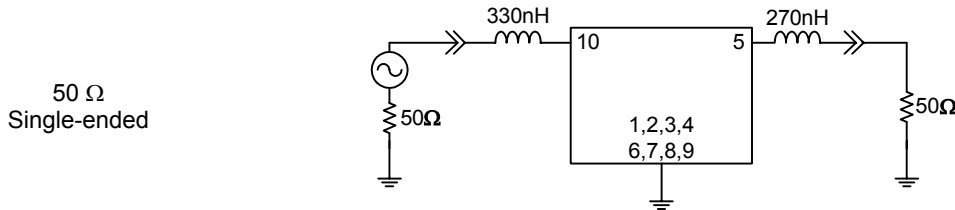


Output Smith Chart

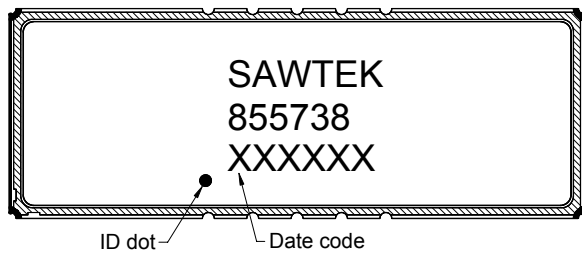


Data Sheet

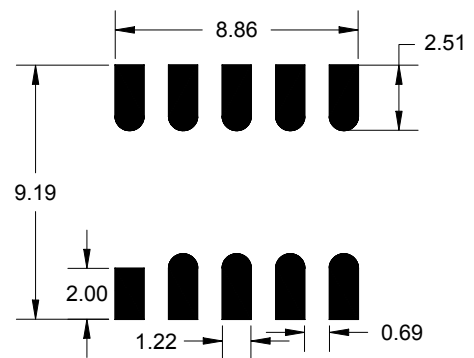
Matching Schematics



Marking



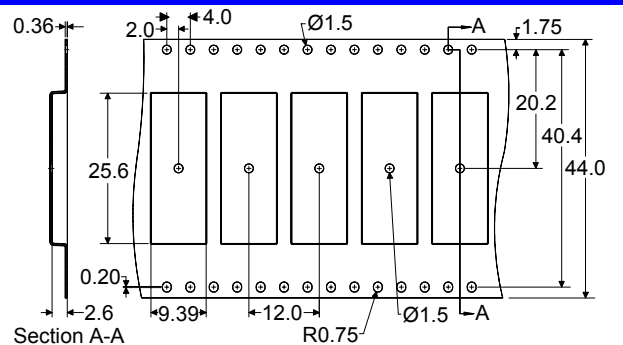
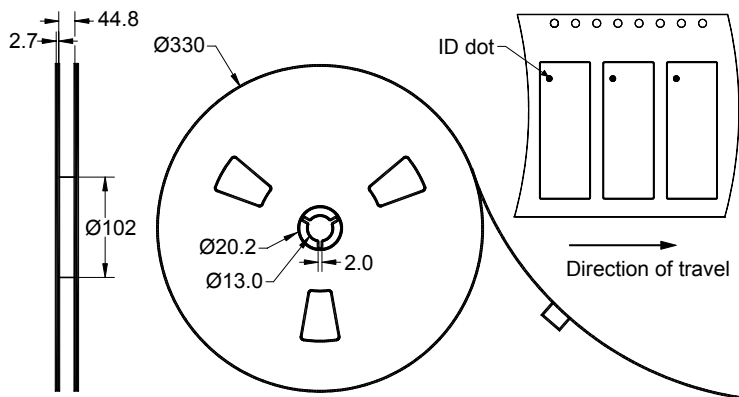
PCB Footprint



Date code is the day of the current year in Julian format, last digit of the year, and hour of the day

This footprint represents a recommendation only
Dimensions shown are nominal in millimeters

Tape and Reel



Dimensions shown are nominal in millimeters
Packaging quantity: 1000 units/reel


Data Sheet

Maximum Ratings


Parameter	Symbol	Minimum	Maximum	Unit
Operating Temperature Range	T	0	+70	°C
Storage Temperature Range	T _{stg}	-40	+85	°C

Important Notes

Warnings

- Electrostatic Sensitive Device (ESD) 
- Avoid ultrasonic exposure

RoHS Compliance

- This product complies with EU directive 2002/95/EC (RoHS) 

Solderability

- Compatible with JEDEC J-STD-020C **Pb**-free process, **260°C** peak reflow temperature ([see soldering profile](#))

Links to Additional Technical Information

[PCB Layout Tips](#)
[Qualification Flowchart](#)
[Soldering Profile](#)
[S-Parameters](#)
[RoHS Information](#)
[Other Technical Information](#)

Sawtek's liability is limited only to the Surface Acoustic Wave (SAW) component(s) described in this data sheet. Sawtek does not accept any liability for applications, processes, circuits or assemblies, which are implemented using any Sawtek component described in this data sheet.

Contact Information



PO Box 609501
Orlando, FL 32860-9501
USA

Phone: +1 (407) 886-8860
Fax: +1 (407) 886-7061
Email: custservice@sawtek.com
Web: www.sawtek.com

Or contact one of our worldwide
Network of [sales offices](#),
[representatives or distributors](#)