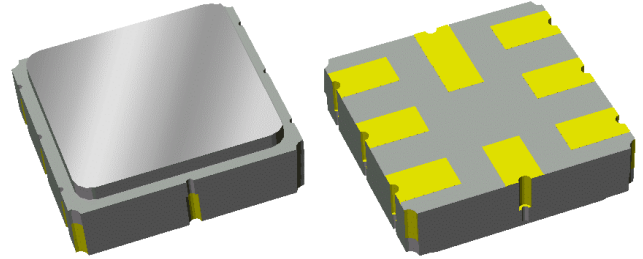


Preliminary Data Sheet

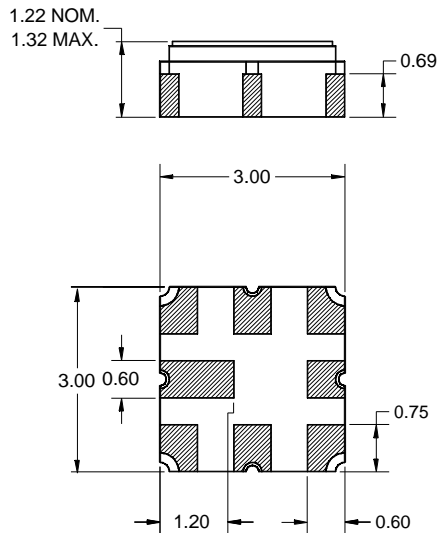
Features

- For WLAN applications
- Usable bandwidth 16 MHz
- Low loss
- High attenuation
- No impedance matching required for operation at 100 Ω
- Balanced operation
- Ceramic Surface Mount Package (SMP)
- Small size



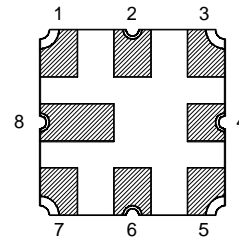
Package

Surface Mount 3.00 x 3.00 x 1.32 mm



Pin Configuration

Bottom View



| Pin No. | Description |
|---------|-------------|
| 1 | Input |
| 2 | Bal Input |
| 6 | Output |
| 5 | Bal Output |
| 3,4,7,8 | Ground |

Preliminary Data Sheet

Electrical Specifications ⁽¹⁾

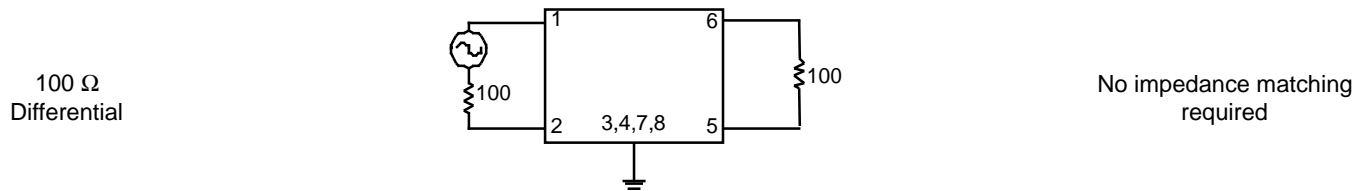
Operating Temperature Range: -10 to +85 °C

| Parameter | Minimum | Typical | Maximum | Unit |
|---------------------------------------|---------|---------|---------|----------|
| Center Frequency | - | 1150 | - | MHz |
| Lower 1 dB Point | - | - | 1145 | MHz |
| Upper 1 dB Point | 1155 | - | - | MHz |
| Lower 2 dB Point | - | - | 1142 | MHz |
| Upper 2 dB Point | 1158 | - | - | MHz |
| Minimum Insertion Loss | - | 4.4 | 5.5 | dB |
| Absolute Group Delay at 1150 MHz | - | 55 | 80 | nsec |
| Group Delay Variation 1142 – 1158 MHz | - | 14 | 90 | nsec p-p |
| Relative Attenuation | | | | |
| 500 – 1118 MHz | 35 | 52 | - | dB |
| 1118 – 1128 MHz | 4 | 12 | - | dB |
| 1170 – 1182 MHz | 20 | 27 | - | dB |
| 1182 – 1600 MHz | 35 | 44 | - | dB |

Notes:

- All specifications are based on the test circuit shown below

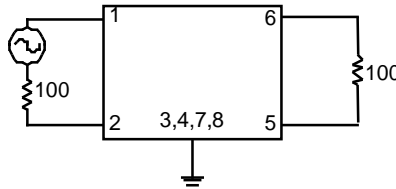
Test Circuit:



Preliminary Data Sheet

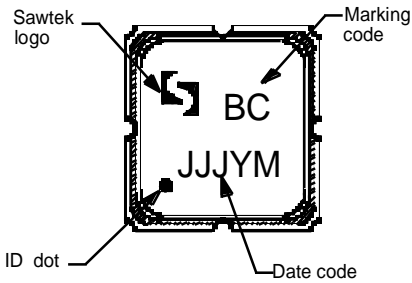
Matching Schematics

100 Ω
Differential

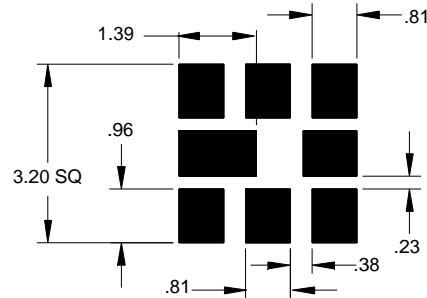


No impedance matching
required

Marking

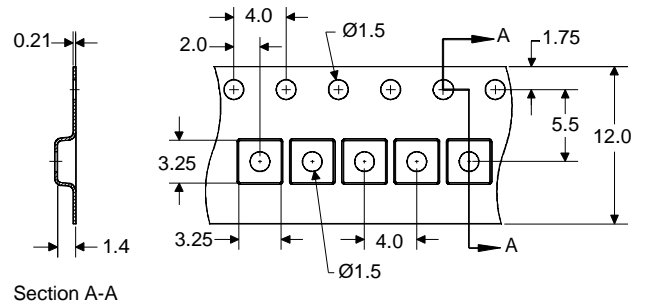
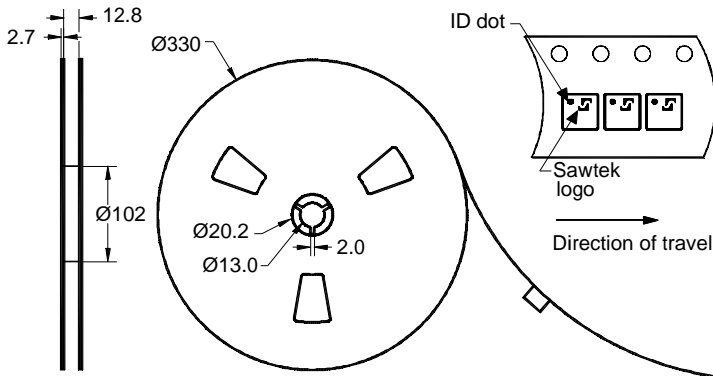


PCB Footprint



This footprint represents a recommendation only
Dimensions shown are nominal in millimeters

Tape and Reel



Dimensions shown are nominal in millimeters
Packaging quantity: 5000 units/reel