


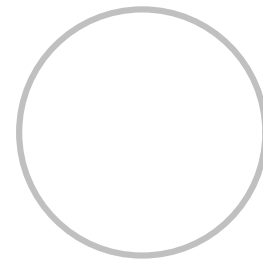
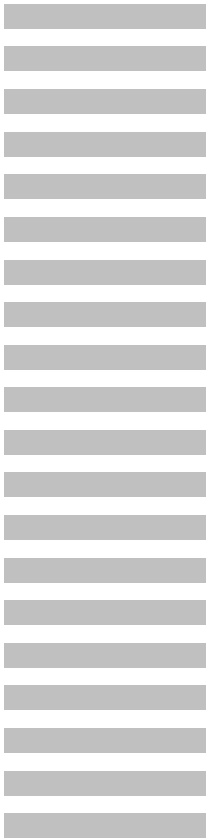
**Product number/revision**  
**Serial number**

ATMEL Norway	*			
Vestre Rosten 79	*			
N-7075 TILLER	*			
NORWAY				
Date:	02.10.2009	12:25:44	PAGE:	1 of 1
Document number:	*		Revision:	3
TITLE: QTouch Xplained				
Touch_Xplained.SchDoc				

# QTouch™ Xplained

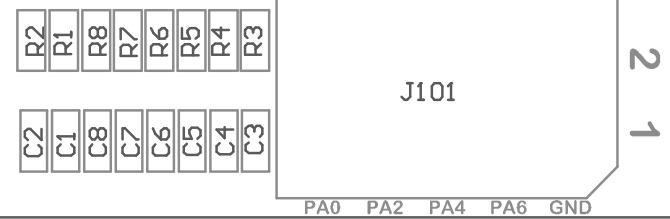
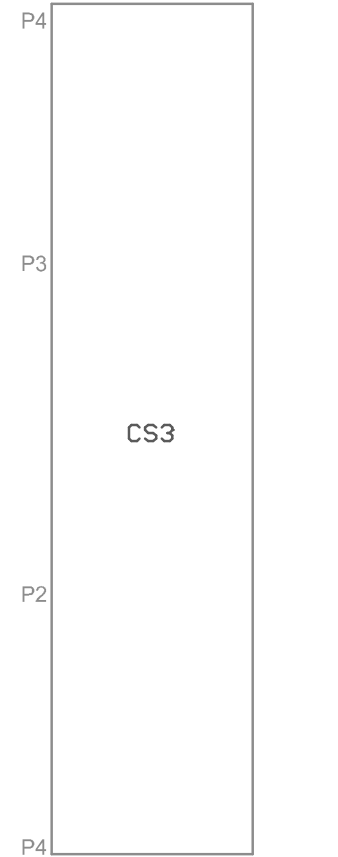
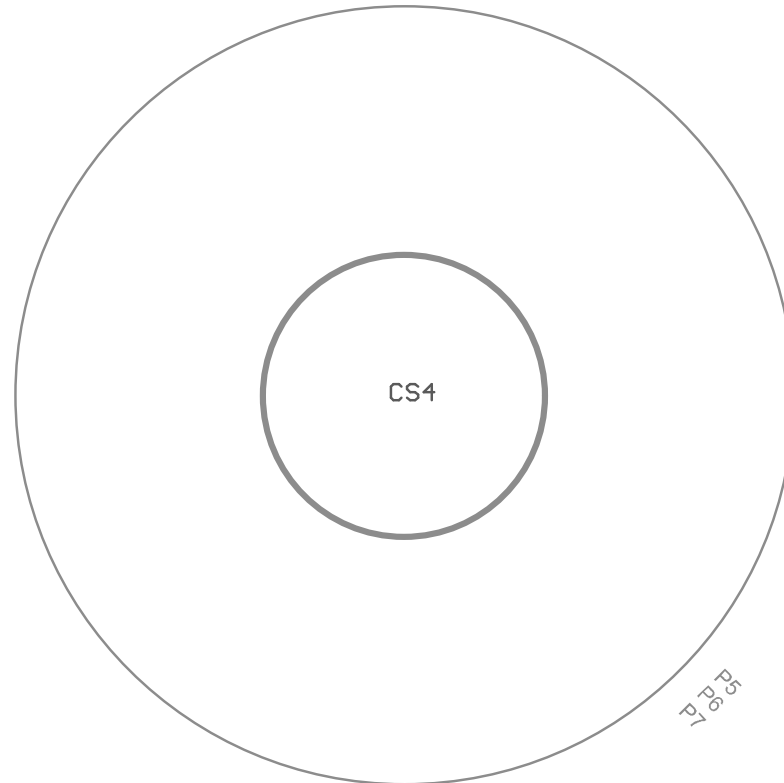
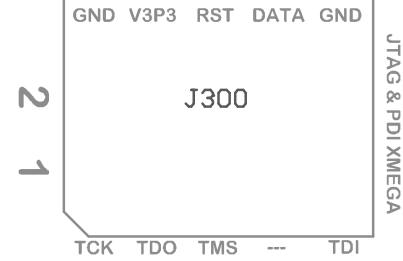
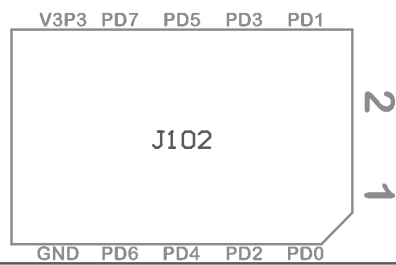
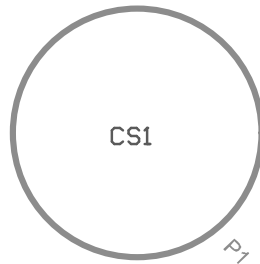
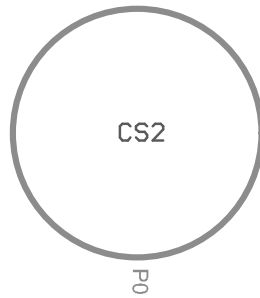
GND

GND

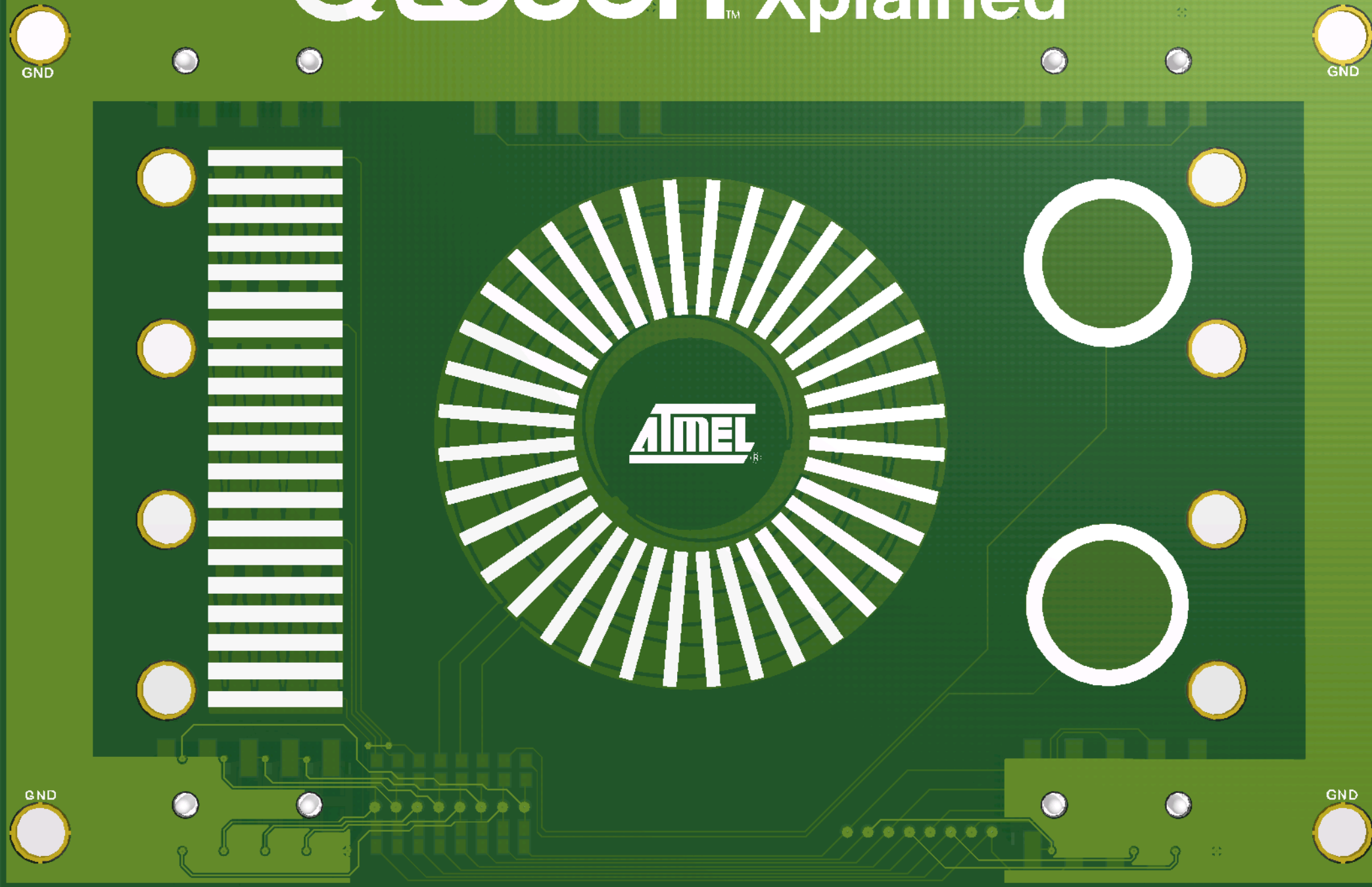


GND

GND

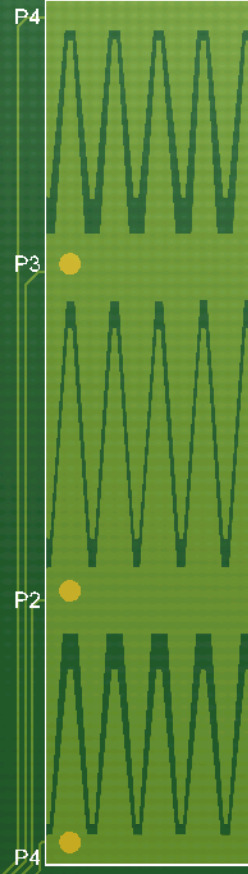
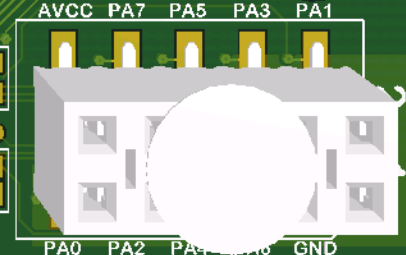
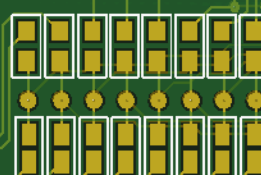
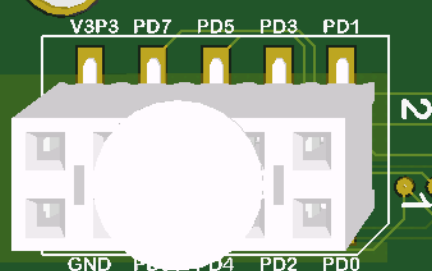
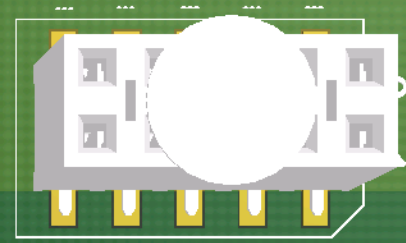
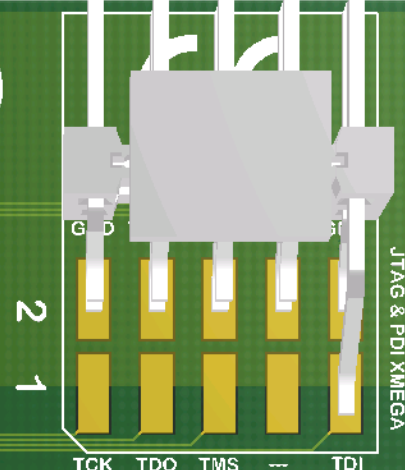
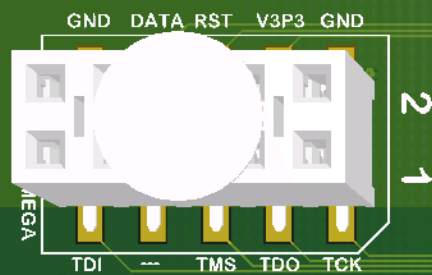


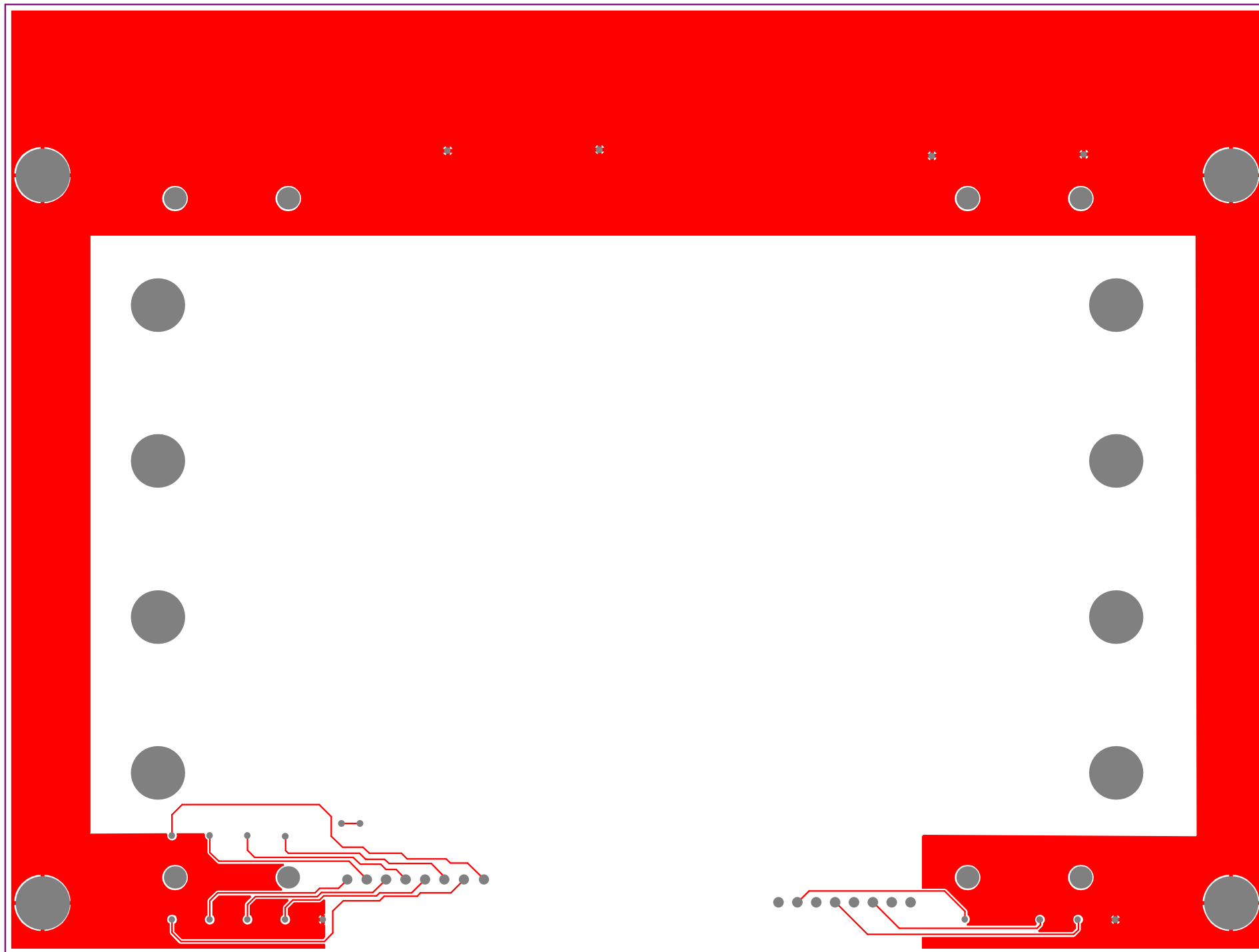
# QTouch™ Xplained

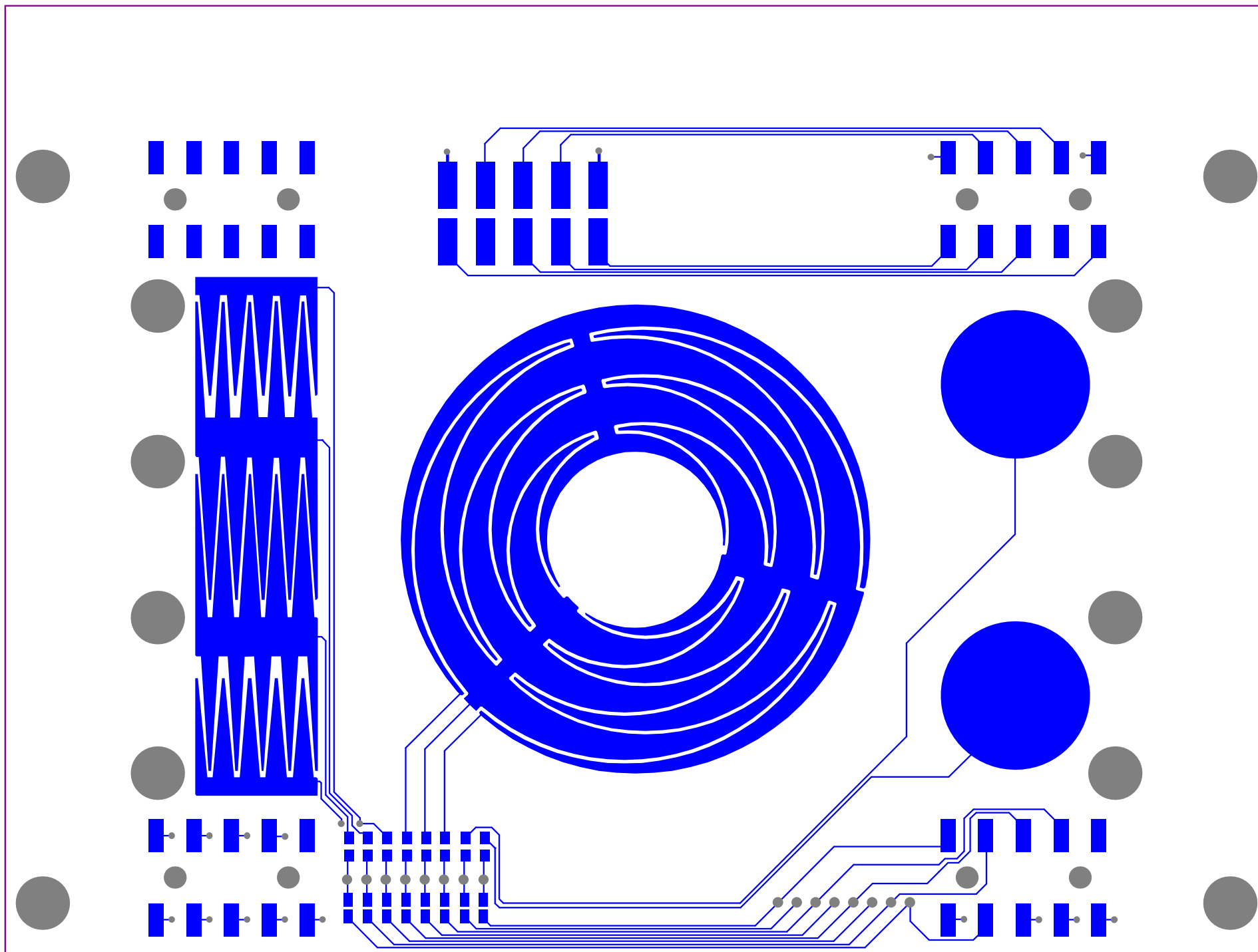




PCBA LABEL



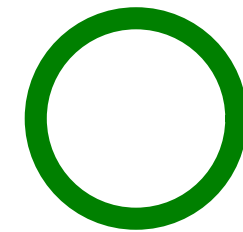
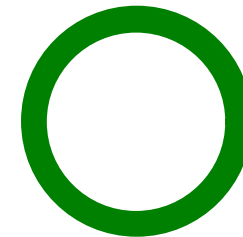
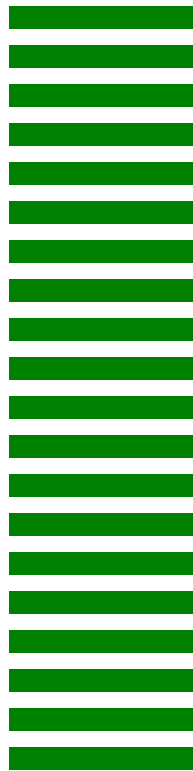




# QTouch™ Xplained

GND

GND



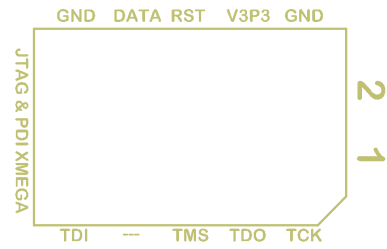
GND

GND

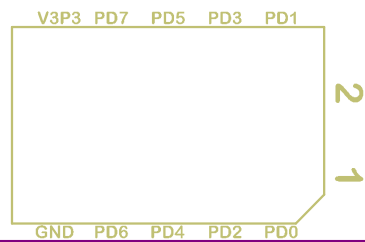
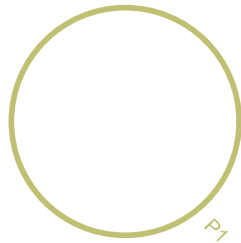
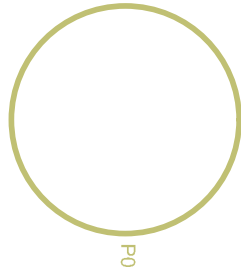
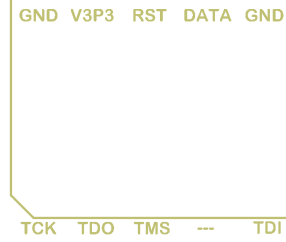




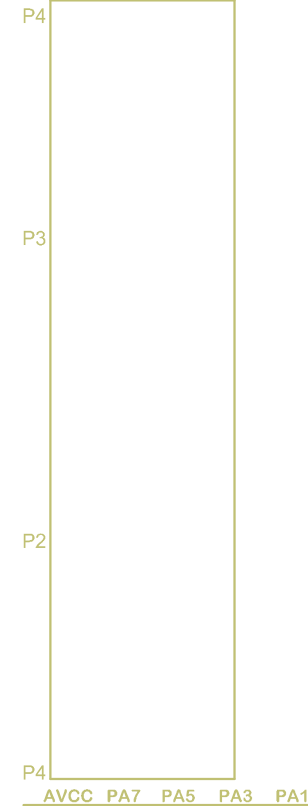
PCBA LABEL

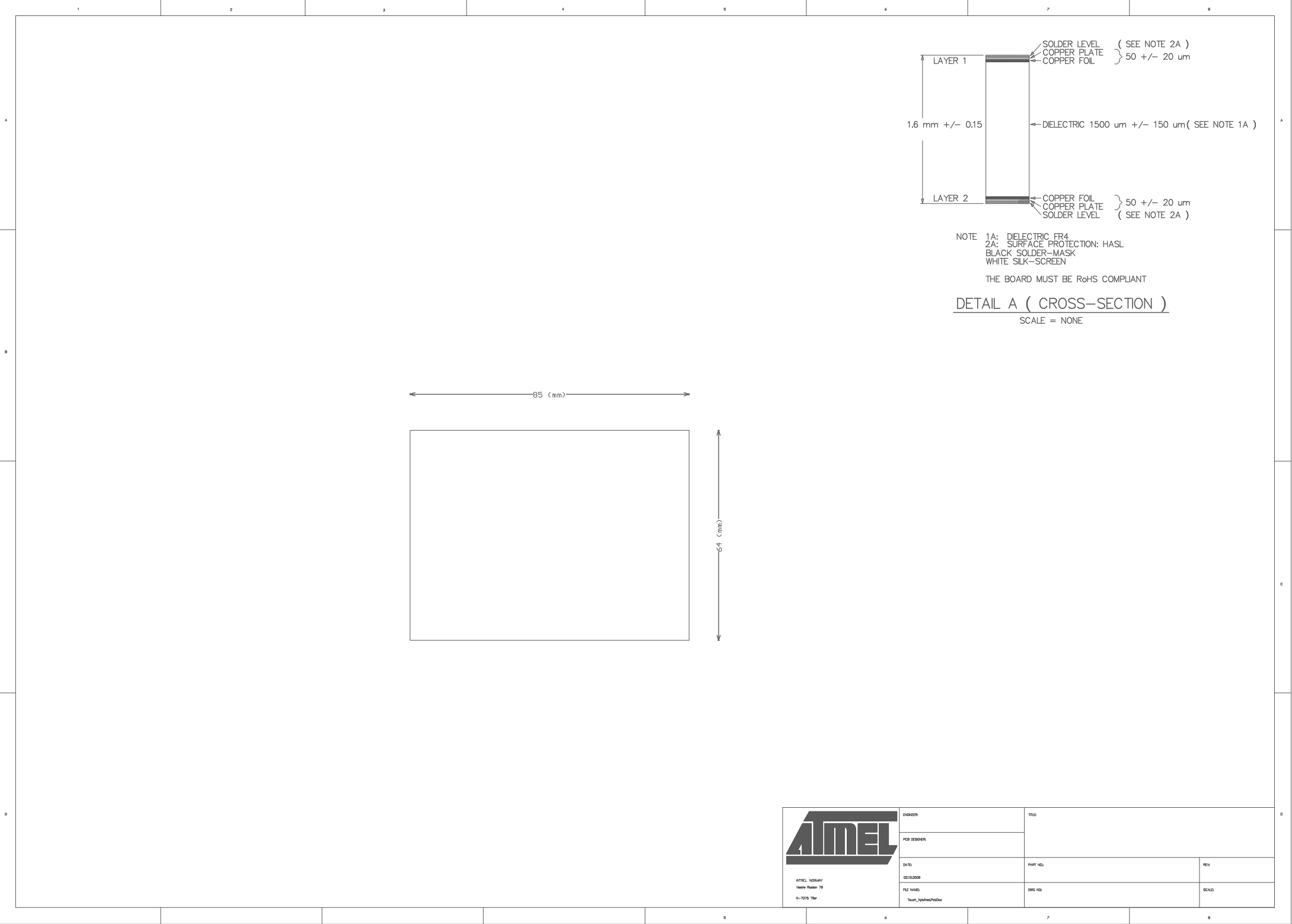


JTAG &amp; PDI XMEGA

2  
1

JTAG &amp; PDI XMEGA

2  
12  
1



NOTE 1A: DIELECTRIC FR4  
2A: SURFACE PROTECTION: HASL  
BLACK SOLDER-MASK  
WHITE SILK-SCREEN  
THE BOARD MUST BE RoHS COMPLIANT  
DETAIL A ( CROSS-SECTION )  
SCALE = NONE



ATMEL NORWAY  
Vestre Rosten 79  
N-7075 Tiller

ENGINEER		TITLE	
PCB DESIGNER			
DATE	02.10.2008	PART NO.	REV.
FILE NAME	Touch_Keyboard_PcbDoc	DWG NO.	SCALE

# Component list

QTouch Xplained

Source Data From:

Project: Touch\_Xplained.PrjPcb

Variant: None



Report Date: 02.10.2009 12:25:57

Print Date: 02-Oct-09 12:26:02 PM

#	Designator	Quantity	MPN	Manufacturer	Value	Description	AN
1	C1, C2	2	12n	Multicomp	12n	Ceramic capacitor, SMD 0402, X7R, 16V, +/-10%	A01-0319
2	C3, C4, C5, C6, C7, C8	6			22n	Ceramic capacitor, SMD 0402, X7R, 25V, +/-10%	A01-0293
3	J100, J101, J102, J200	4	SSM-105-L-DV	SAMTEC	2x5 Socket SMD	2x5 Female Socket SMD Samtec SSM	A08-0172
4	J300	1	TSM-105-01-T-DH-K-TR	SAMTEC	TSM-105-01-T-DH-K-TR	2x5 pin header, Right angle, 2.54mm pitch, Solderable	A08-0392
5	LABEL1	1	505462	ACT Logimark AS	Label PCBA	PCBA identification label PP Top White Gloss	A09-0611
6	PCB1	1	A08-0645		A08-0645	Touch Xplained printed circuit board PCB, 2-layer	A08-0645
7	R1, R2, R3, R4, R5, R6, R7, R8	8			1k	Thick film resistor, SMD 0402, 1/16W, 1%	A02-0212

Approved

23

Notes