

Test Procedure for the NCP1392LCDTV demo boards

ON Semiconductor®



08/28/2008

The following steps detail the test procedure for all these boards:

Necessary Equipment:

- 1 Current limited 90 ÷ 265Vrms AC source (current limited to avoid board destruction in case of a defective part) (e.g. AGILENT 6811)
- 1 AC Volt-Meter able to measure up to 300V AC. (e.g. KEITHLEY 2000)
- 1 AC Amp-Meter able to measure up to 3A AC. (e.g. KEITHLEY 2000)
- 4 DC Volt-Meter able to measure up to 50V DC. (e.g. KEITHLEY 2000)
- 4 DC Amp-Meter able to measure up to 5A DC. (e.g. KEITHLEY 2000)
- 4 DC Electronic Load 0 - 60A (e.g. AGILENT 6060B)

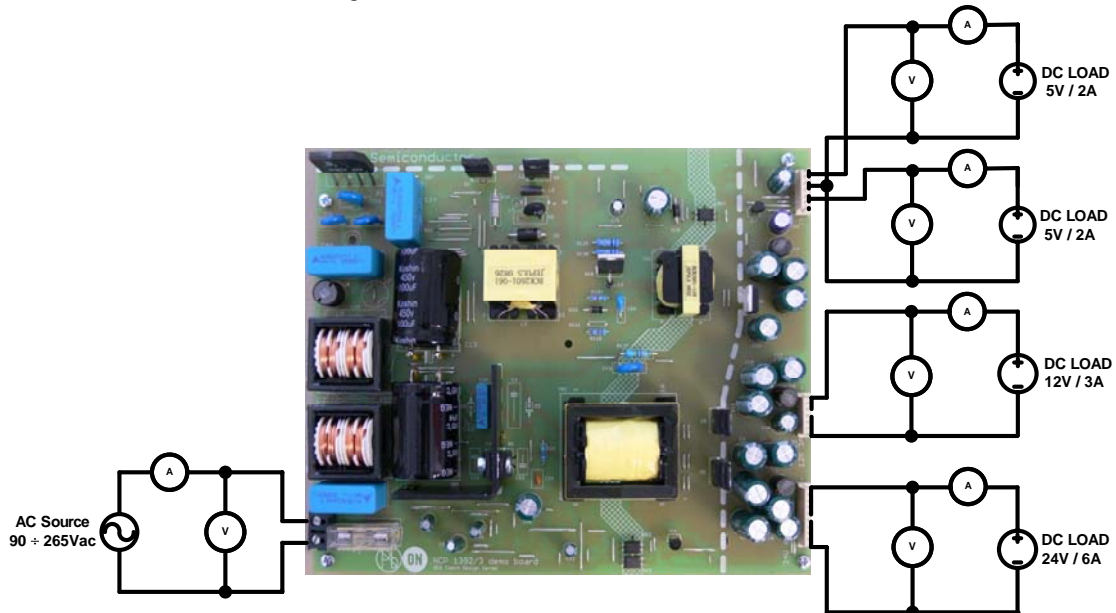


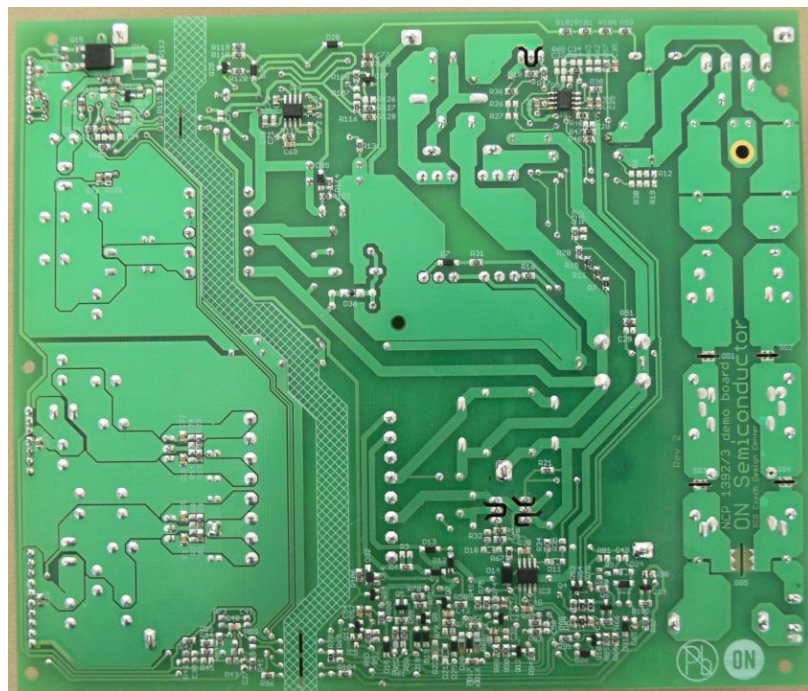
Figure 1: Test Setup

Test Procedure:


1. Connect the test setup as shown in Figure 1.
2. Apply an input voltage, $U_{in} = 90 - 265V_{ac}$
3. Apply $I_{out}(\text{load}) = 0A$
4. Check that U_{out} is 24; 12V; 5V; 5V
5. Increase $I_{out}(\text{load})$ load to: 24V/6A; 12V/3A; 5V/2A; 5V/2A
6. Check that U_{out} is 24; 12V; 5V; 5V
7. Power down the load
8. Power down U_{in}
9. End of test



Top view of both TV220W demo boards



Bottom view of both TV220W demo boards

 Be careful when manipulating the boards in operation, lethal voltages up to 425V are present on the primary side. An isolation transformer is also recommended for safer manipulations.