

Test Procedure for the NCP3163 Boost Evaluation Board

ON Semiconductor®



04/20/2006

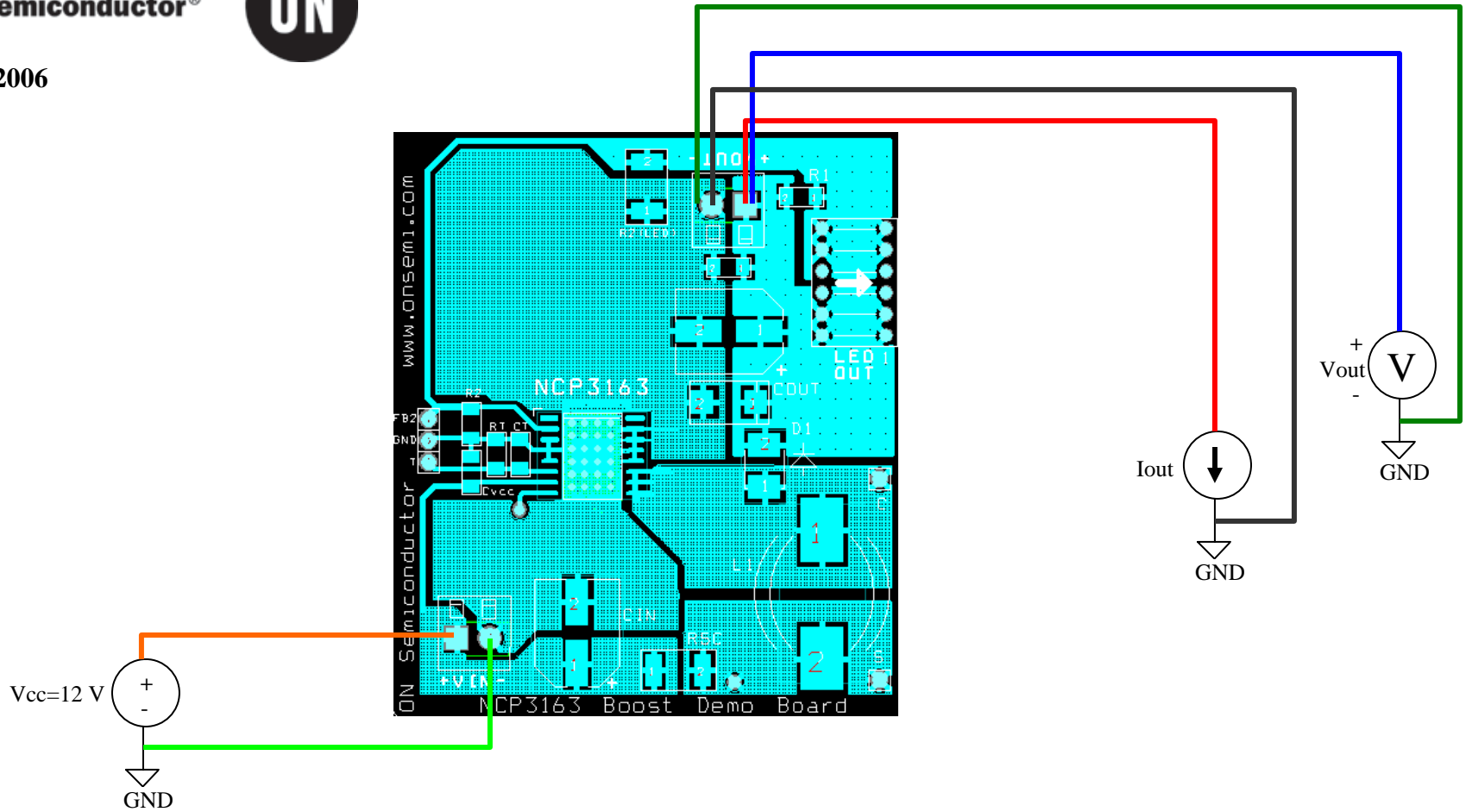


Figure 1: Test Setup

Table 1: Required Equipment

Voltage Supply (12 V, 3 A)	Voltage Meter	Electronic Load or Current Source
----------------------------	---------------	-----------------------------------

Test Procedure:

1. Connect the test setup as shown in Figure 1.
2. Apply an input voltage, $V_{CC} = 12.0 \text{ V}$.
3. Apply $I_{OUT} = 0 \text{ mA}$ load.
4. Check that V_{OUT} is 24 V (24.7 V - 25.3 V).
5. Increase I_{OUT} load to 700 mA.
6. Check that V_{OUT} is 24 V (24.5 V - 25.3 V).
7. Power down the load.
8. Power down V_{CC} .