

Test Procedure for the NCP362GEVB Evaluation Board

Check no short circuit between each pins.

Check no short circuit between each pins and exposed pad (except pins 2, 5 and 8)

Check Body diode is present between:

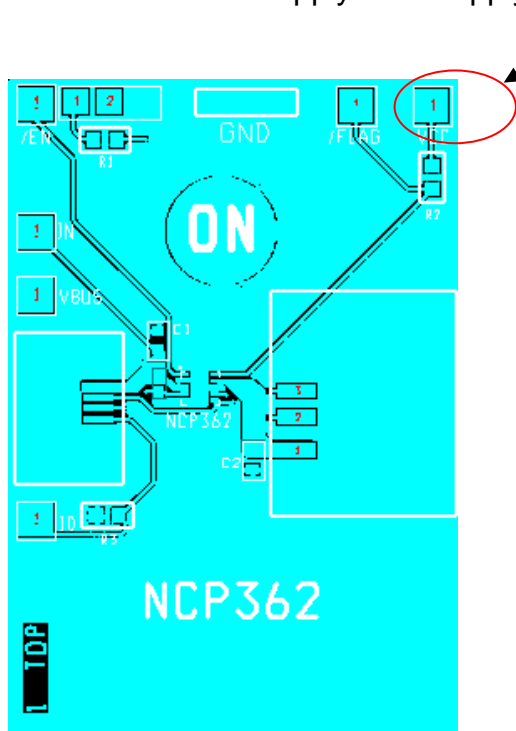
- 1 and GND
- 3 and GND
- 4 and GND
- 6 and GND
- 7 and GND
- 9 and GND
- 10 and GND

Check between USB IN and OUT connectors:

- USB IN Pin 2 = USB OUT pin2
- USB IN Pin 3 = USB OUT pin3
- USB IN Pin 5 = USB OUT pin4 = GND

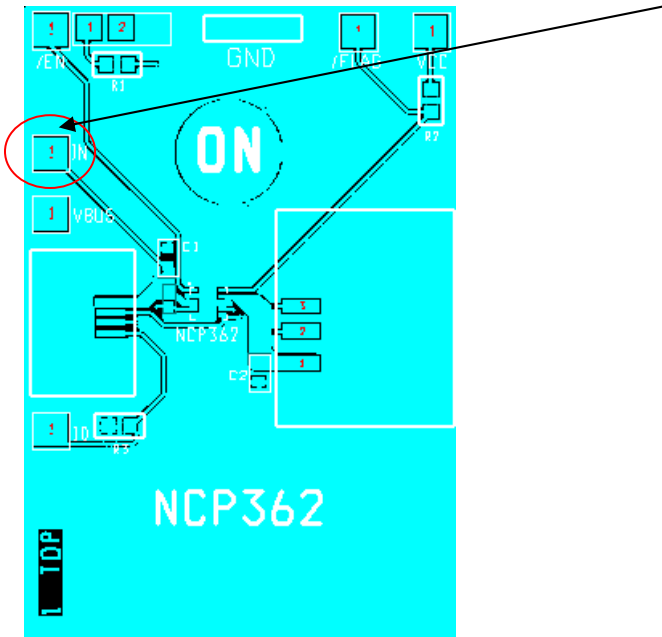
Turn On procedure.

1. Connect a supply 4.2V supply on VCC test point.

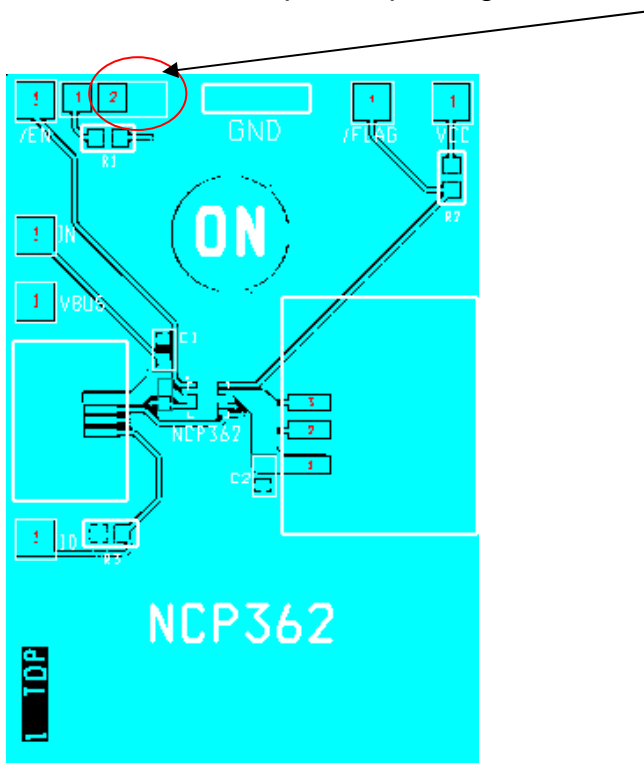




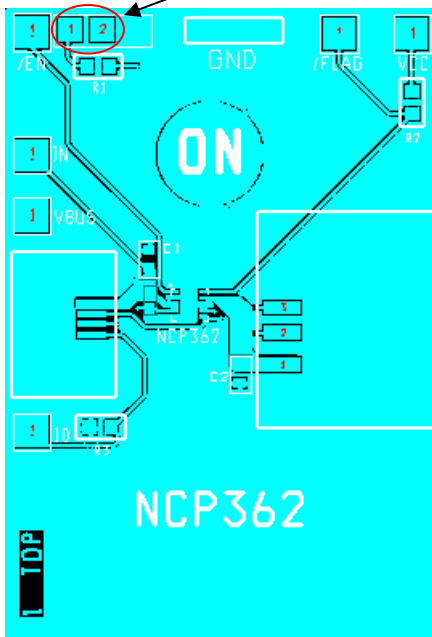
2. Connect a +5 V power supply on INPUT test point.



3. Connect a 2 pin strap on right side EN connector.



4. Measure VBUS OUT = 5V
5. Measure VIN current consumption: Typical 20 μ A, Max 35 μ A
6. Measure FLAG pin > 1.2V.
7. Connect EN strap on left side



8. Check Vout < 0.3V (wait C2 cap discharge, few second)
9. Check is still FLAG pin > 1.2V

Turn Off sequence.

1. Turn off Vin supply. Disconnect.
2. Turn off Vcc supply. Disconnect.

Please contact Application Engineer for further information.
 bernard.remaury@onsemi.com