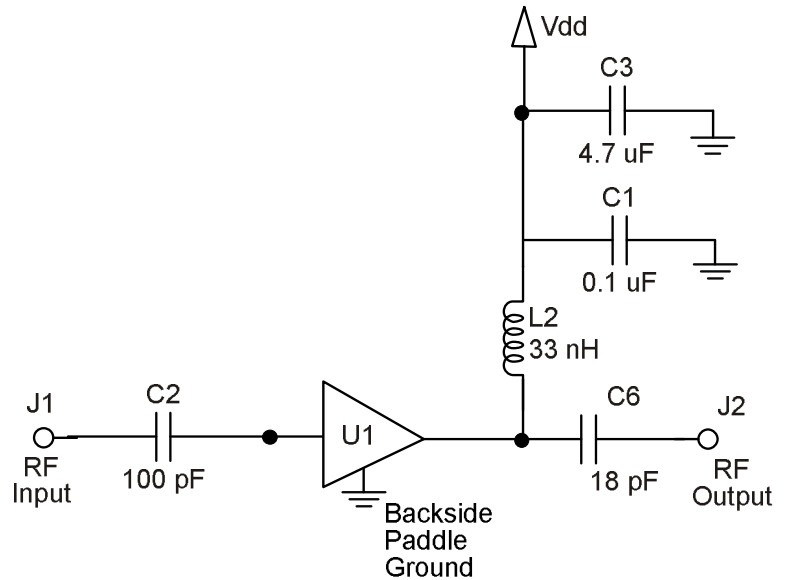
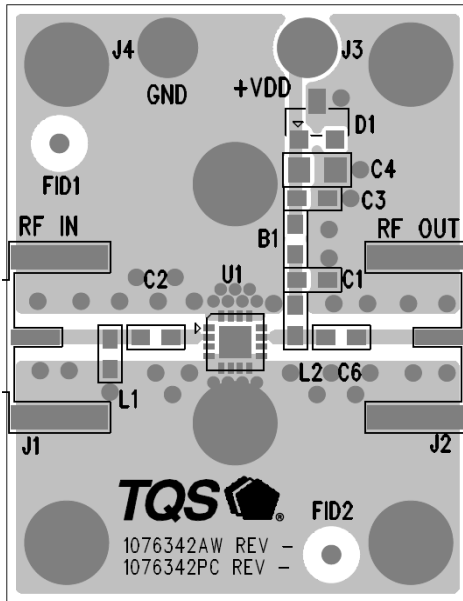


# TQP3M9005

## LNA Gain Block

### Application Circuit Configuration



**Notes:**

1. See PC Board Layout, under Applications information.
2. Components shown on the silkscreen but not on the schematic are not used.
3. B1 (0  $\Omega$  jumper) may be replaced with copper trace in the target application layout.
4. All components are of 0603 size unless stated on the schematic.
5. C6 and L2 value are critical for linearity performance.

### Bill of Material: TQP3M9005-PCB

Reference Desg.	Value	Description	Manufacturer	Part Number
U1		High Linearity LNA Gain Block	TriQuint	TQP3M9005
C2	100 pF	Cap, Chip, 0603, 50V, NPO, 5%	various	
C6	18 pF	Cap, Chip, 0603, 50V, NPO, 5%	various	
C1	0.1 uF	Cap, Chip, 0603, 16V, X7R, 10%	various	
L2	33 nH	Ind, Chip, 0603, 5%	various	
C3	4.7 uF	Cap, Chip, 0603, 6.3V, X5R, 20%	various	
B1	0 $\Omega$	Res, Chip, 0603, 1/16W, 5%	various	
L1, D1, C4	Do Not Place		various	