

NOTES UNLESS OTHERWISE SPECIFIED:

1. FABRICATE IAW IPC-6012, CLASS 2, CURRENT REVISION.
2. BOARD SHALL MEET THE INSPECTION CRITERIA OF IPC-A-600 CLASS 2, CURRENT REVISION.
3. USE ARTWORK 1075825AW CURRENT REV.

4 MATERIAL: NELCO N4000-13.

5 FINISHED WEIGHT PER SQUARE FOOT NOMINAL:
OUTER LAYERS SHALL BE 1 OZ.
INNER LAYERS SHALL BE 1 OZ.

6. DESMEAR HOLES AND VIAS.

7 FINISH: ELECTROLESS NI IMMERSION AU (ENIG).
GOLD PLATING THICKNESS TO BE BETWEEN 3 – 8 MICRONS.

8. SILKSCREEN COMPONENT SIDE ONLY WITH NONCONDUCTIVE EPOXY INK. COLOR SHALL BE A CONTRASTING INK WITH RESPECT TO SOLDERMASK COLOR. DISTORTION OF SILKSCREEN IS ACCEPTABLE OVER TRACES. REMOVE EPOXY INK FROM SOLDER LANDS.

9. APPLY SOLDERMASK OVER BARE COPPER (SMOBC) IAW IPC-SM-840, TOP SIDE ONLY, USING LPI, COLOR CLEAR OR GREEN. SOLDERMASK OVER VIAS IS NOT ACCEPTABLE.

10 SUPPLIER LOGO AND LOT NUMBER/DATE CODE SHALL ONLY BE SILKSCREENED WITH NON-CONDUCTIVE EPOXY INK IN APPROX. LOCATION SHOWN.

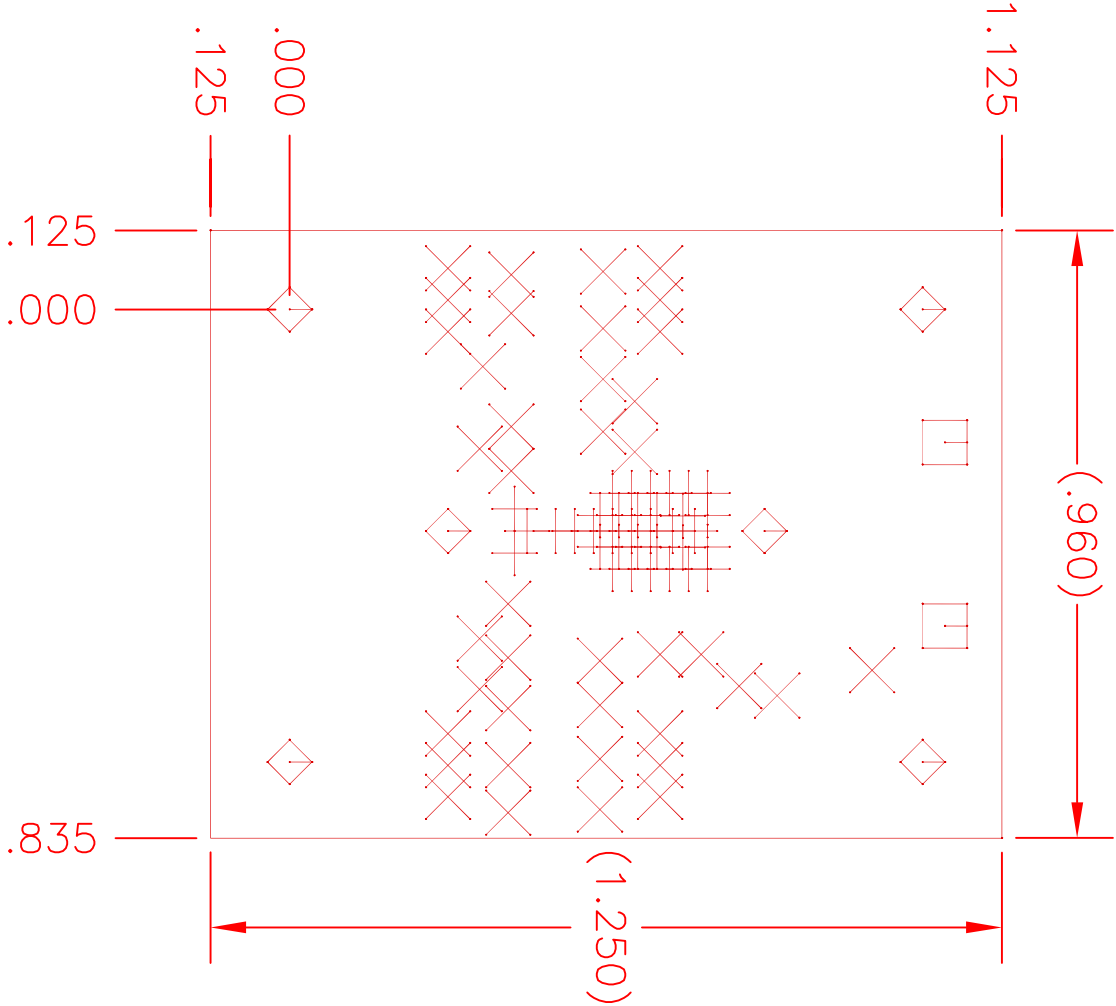
11 MARK ARTWORK NO. 1075825AW, CURRENT REV LEVEL APPROX. WHERE SHOWN.

12 SCORING PROCESS TO FOLLOW DETAIL "A" (SEE SHEET 2).
CIRCUIT FABRICATOR TO BREAK ONE SUB PANEL FROM EACH LOT TO ENSURE PROPER SCORING ACHIEVED.

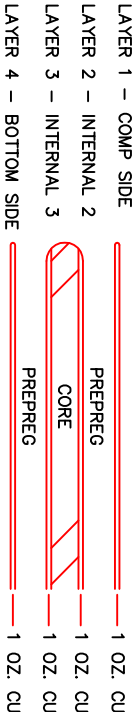
13 A MAXIMUM OF TWO (2) "X"-OUT ARE ALLOWED PER SUB-PANEL.

14. ALL ROUTING INDICATED BY HATCHED AREAS

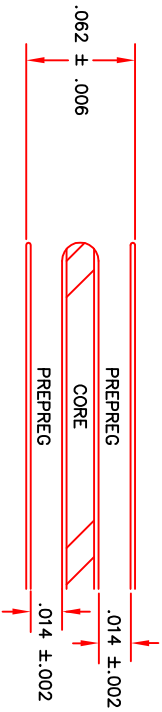
COMPONENT SIDE



4 LAYER
CROSS SECTION
FILM SET



4 LAYER
CROSS SECTION
DIMENSIONAL TOLERANCE



HOLE SCHEDULE (ALL PLATED THRU DIAMETERS ARE AFTER PLATING)

SYM	DESCRIPTION	PLATED THRU	QTY
+	Ø.010 +.003/- .010 THRU	YES	35
X	Ø.020 ±.003 THRU	YES	40
□	Ø.055 ±.003 THRU	YES	2
◇	Ø.102 ±.003 THRU	YES	6

A

B

C

D

A

B

C

D

1075825PC