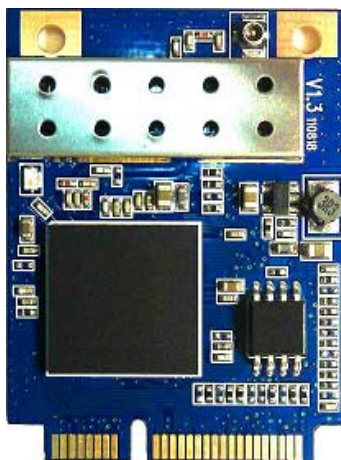


Serial Command Guide For WizFi630 Users

(Version 1.1)



This document describes usages for WizFi630 Wi-Fi AP Module. Descriptions scope and boundary is limited as bellows

- Testing environments
- Networks operation mode
- Serial operation Modem
- Supplied software usages
- Serial command definition



©2012 WIZnet Co., Ltd. All Rights Reserved.

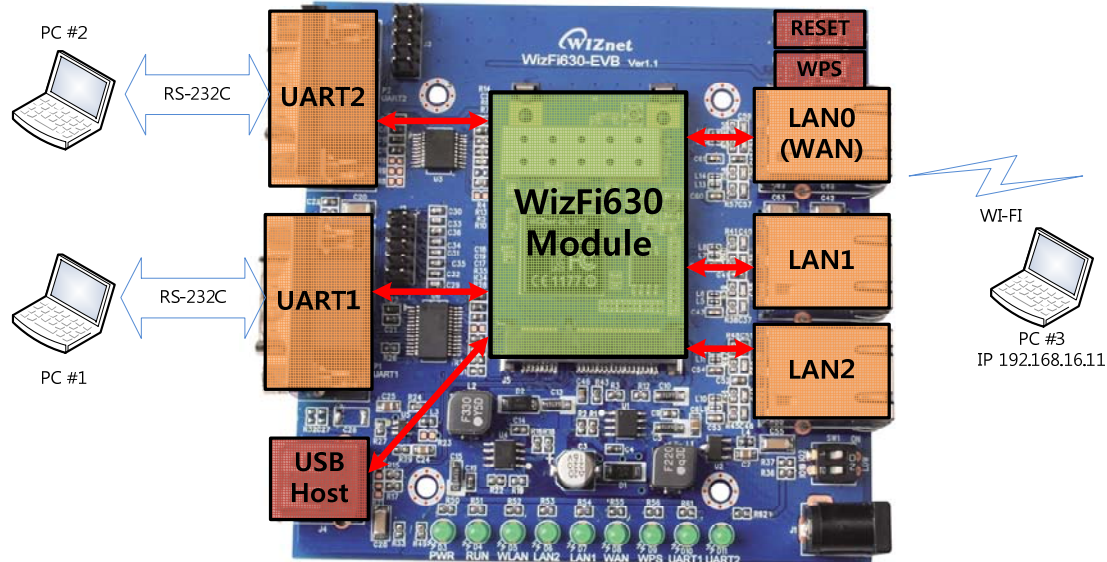
For more information, visit our website at <http://www.wiznet.co.kr>

Table of contents

1. TEST ENVIRONMENT SETUP	1
1.1 System Setup.....	1
1.2 WizFi630's default serial configuration.	1
1.3 PC #3 Setup.....	1
1.4 PC #1 and PC#2 Serial Setup.	1
 2. SIMPLE SERIAL COMMAND AT SERIAL TERMINAL PROGRAM.....	2
 3. WIZSMARTSCRIPT FOR WIZFI630.....	3
3.1 Run Program	3
3.2 Get Basic.....	4
3.3 Functions	10
3.4 Set Operation Mode.....	14
3.5 Set Serial.....	18
 4. SERIAL COMMAND DEFINITIONS	20
 5. ACCESSING MODULE VIA WEB BROWSER	28
 6. MORE INFORMATION.....	28

1. Test Environment Setup

1.1 System Setup



[Factory Default]
 Network Mode : AP Mode
 DHCP Server : Enabled
 IP Address : 192.168.16.254
 Net Mask : 255.255.255.0
 WIFI SSID : WLAN-AP
 Serial config : 38400/8/no/1/no flow ctrl

<WizFi630> 802.11 b/g/n Wi-Fi AP Module

<PC#1> Serial Terminal Program running and connected to WizFi630's Serial Port #1

<PC#2> Serial Terminal Program running and connected to WizFi630's Serial Port #2

<PC#3> TCP Server application is running

1.2 WizFi630's default serial configuration.

- A. WizFi630 Serial Port #1 enabled
- B. Serial configuration : 38400 / 8 data / No Parity / 1 Stop bits / No Flow control
- C. TCP Client Mode / Connection Port 5000
- D. Aux Connection Disabled
- E. WizFi630 Serial Port #2 disabled

1.3 PC #3 Setup.

- F. PC#3's Wi-Fi site survey and connect to SSID named "WLAN-AP"
- G. Check IP address of PC#3
- H. Check IP address at "CMD window", use ipconfig

1.4 PC #1 and PC#2 Serial Setup.

- I. Supplied Serial cable is made with "RJ45 to DIP9"
- J. Connect Serial cable to WizFi630's Serial Port #2
- K. Connect Serial cable to WizFi630's Serial Port #2

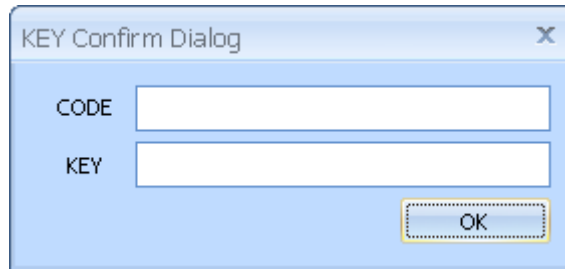
2. Simple serial command at serial terminal program

- ① <RF>
This command gets module's firmware version and normally used to check module is working or not
- ② <ATDT>
This command changes module's "serial working mode" as data mode
This is special command so do not type each character and <ATDT> copy and paste it at terminal program.
- ③ <++++>
This command changes module's serial working mode as "command mode".
In serial command, Incoming serial data is processed as serial command. In data mode, Incoming serial data is processed as data and it is sent remote network hosts. This is special command so do not type each character and <++++> copy and paste it at the terminal program.
- ④ <ATDT?>
This command responses module's current serial working mode
Response "1": serial server is data mode
Response "0": serial server is command mode
This is special command so do not type each character and <ATDT?> copy and paste it at terminal program.
- ⑤ <WP>
This command set network TCP/UDP port number.
As network server mode, it works as network incoming port number
As network client mode, it is remote host network port number to connect server
Ex) <WP5000> // Set port # as 5000
- ⑥ <WX>
This command set remote host IP address.
When set, module connect remote host automatically. Ex) <WX192.168.16.11>
- ⑦ <RQ>
This command responses serial server's network connection status
0: Not Connect
1: Connect as client
2: Connected as server
3: Connected as Client/Server
- ⑧ <WL>
This command saves configured data to flash.
When this command is processed, configuration data is kept even if rebooting.
- ⑨ <abc11>;
This is not command and it is one of sample user data for test

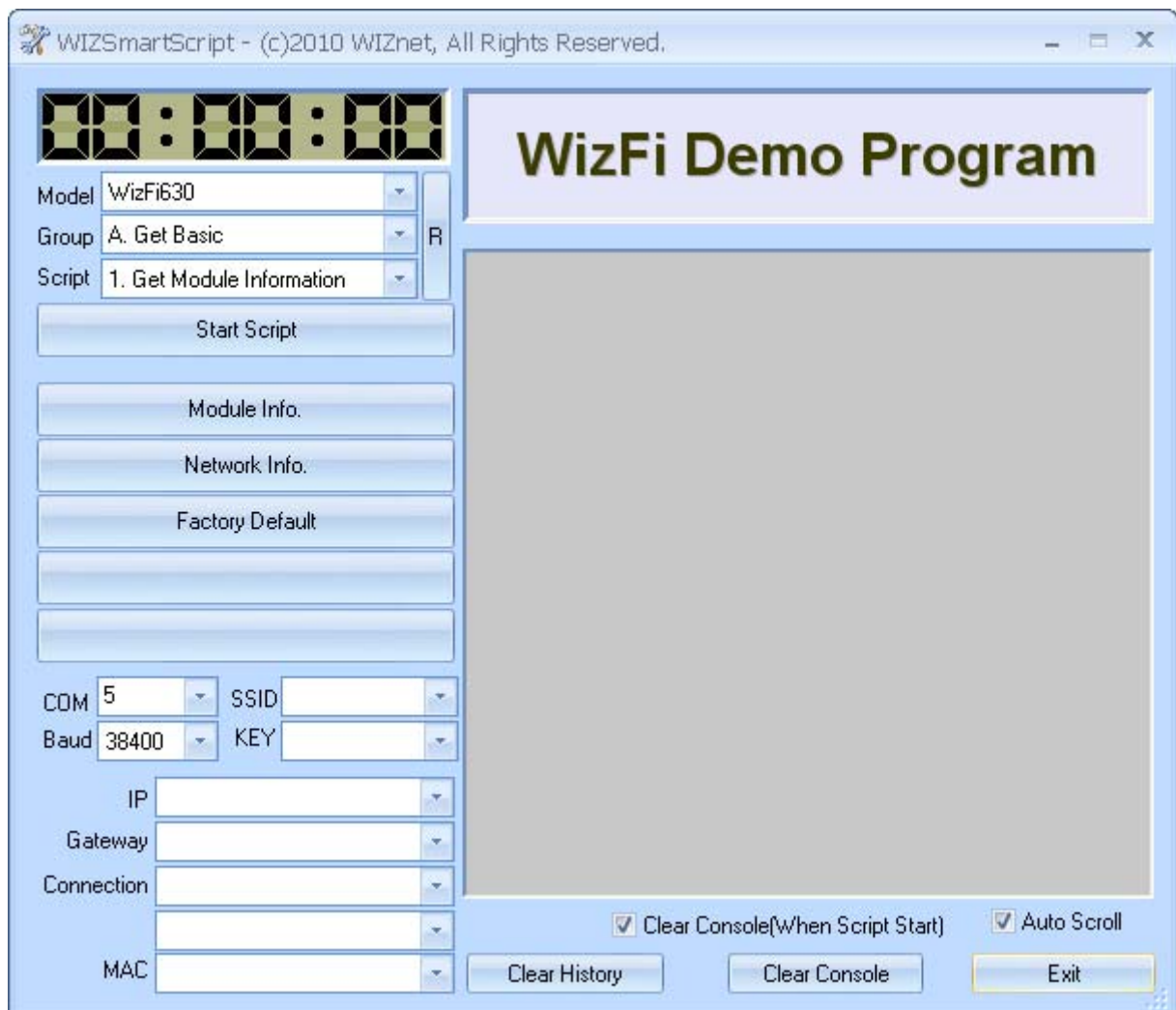
3. WIZSmartScript for WizFi630

3.1 Run Program

- ① Execute the “WIZSmartScript.exe” file.
- ② If you run the WIZSmartScript program, you can see the KEY Confirm Dialog as shown below.
- ③ If you enter the received CODE and KEY, you can operate the program in normal mode.



A small dialog box titled "KEY Confirm Dialog" with a close button (X) in the top right corner. It contains two input fields: "CODE" and "KEY". Below the "KEY" field is an "OK" button.

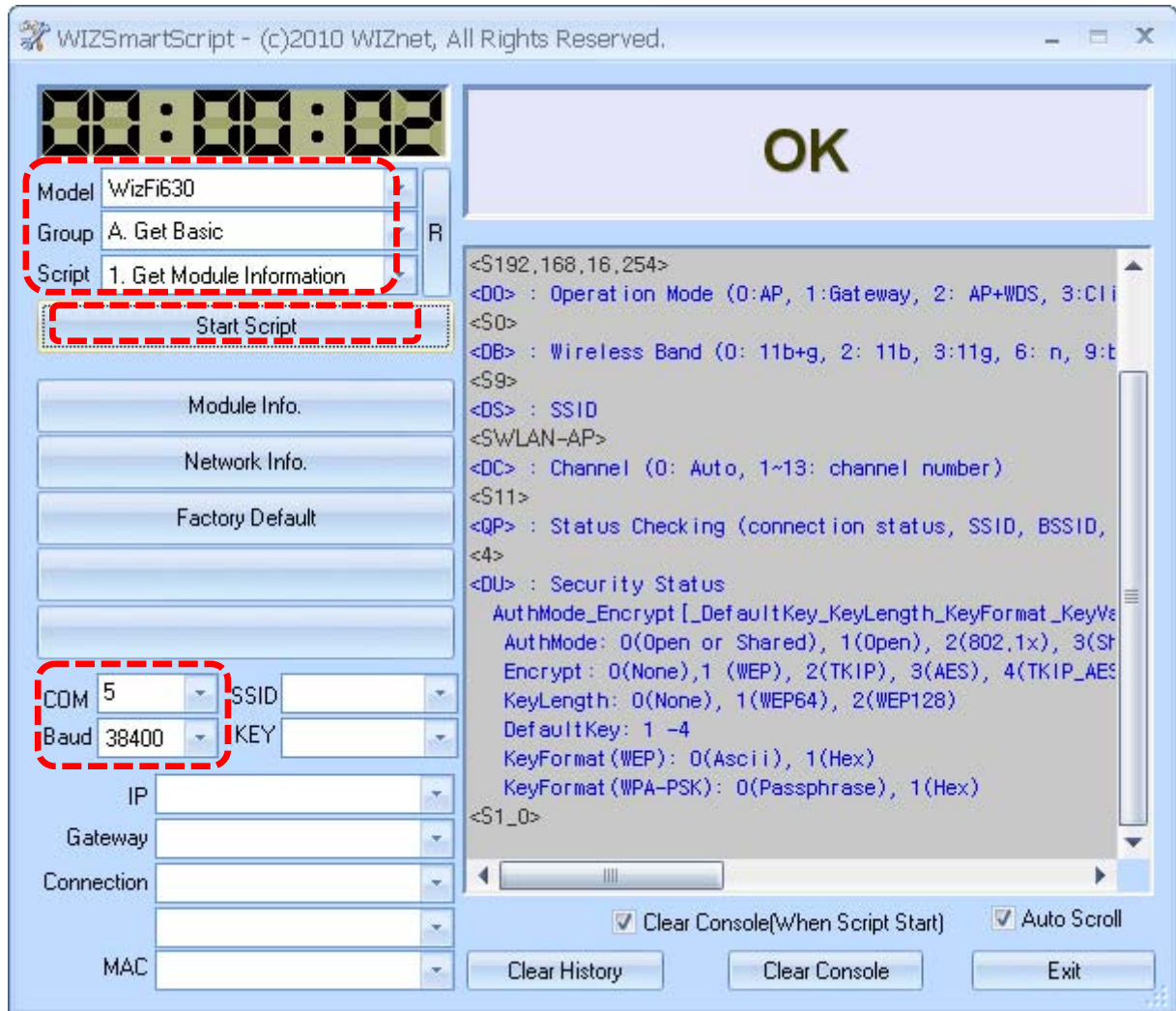


The main application window titled "WIZSmartScript - (c)2010 WIZnet, All Rights Reserved." features a digital display at the top left showing "00:00:00". Below the display are three dropdown menus: "Model" (set to "WizFi630"), "Group" (set to "A. Get Basic"), and "Script" (set to "1. Get Module Information"). To the right of these menus is a small "R" button. Below the menus is a "Start Script" button. Further down are three buttons: "Module Info.", "Network Info.", and "Factory Default". At the bottom left, there are several input fields: "COM" (set to "5"), "Baud" (set to "38400"), "SSID", "KEY", "IP", "Gateway", "Connection", and "MAC". To the right of these fields are checkboxes for "Clear Console(When Script Start)" and "Auto Scroll". At the bottom right are three buttons: "Clear History", "Clear Console", and "Exit". The main area of the window is titled "WizFi Demo Program" and contains a large, empty gray rectangle.

3.2 Get Basic

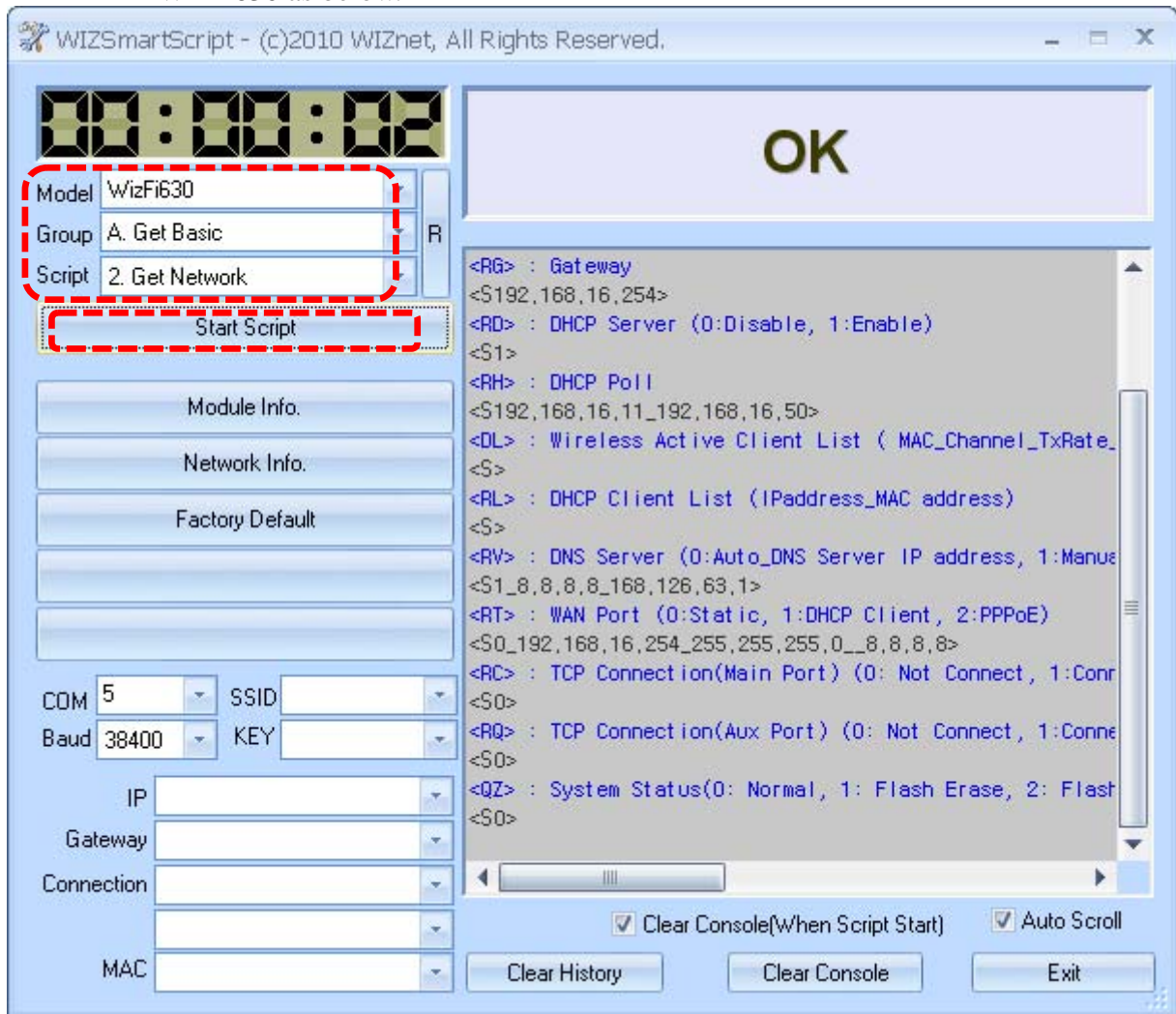
A. Get Module Information

- ① Input the COM port of PC and baud rate. (Default Baud Rate : 38400)
- ② Select “WizFi630” for Model, “A. Get Basic” for Group and “1. Get Module Information” for Script.
- ③ If you click “Start Script”, you can see the basic information of WizFi630 as below.



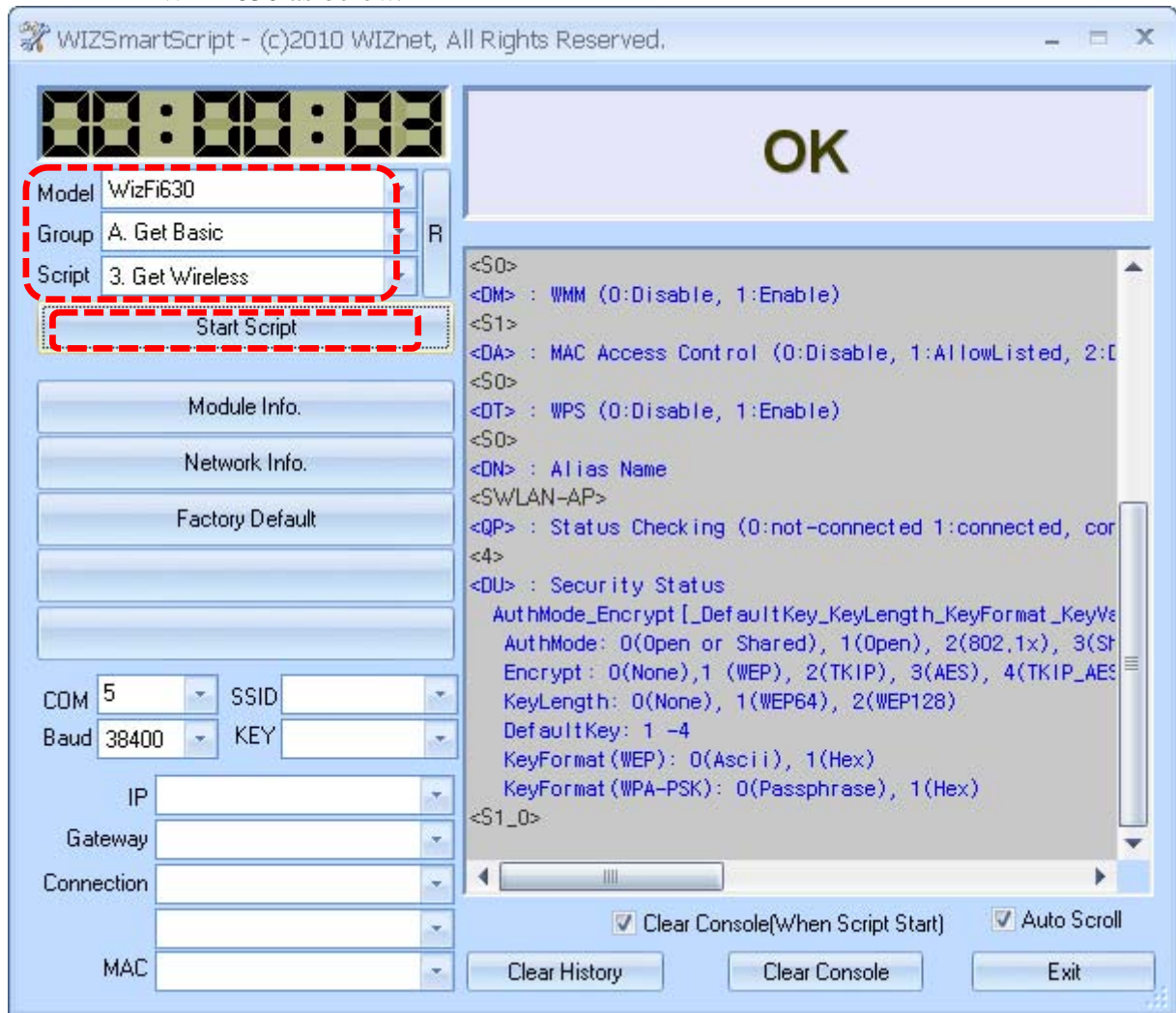
B. Get Network Information

- ① Select “WizFi630” for Model, “A. Get Basic” for Group and “2. Get Network” for Script.
- ② If you click “Start Script”, you can see the network information of WizFi630 as below.



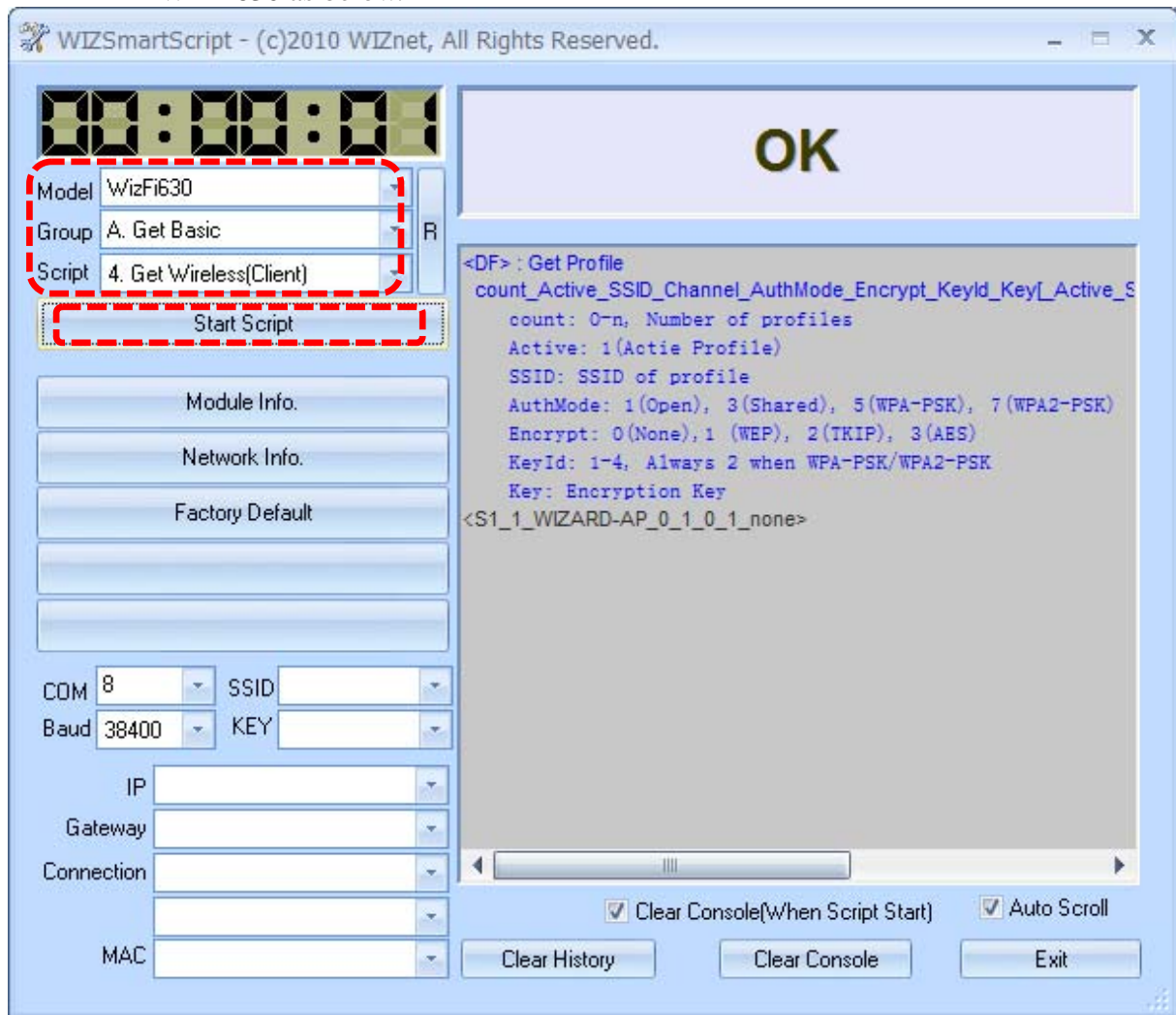
C. Get Wireless Information

- ① Select “WizFi630” for Model, “A. Get Basic” for Group and “3. Get Wireless” for Script.
- ② If you click “Start Script”, you can see the wireless information of WizFi630 as below.



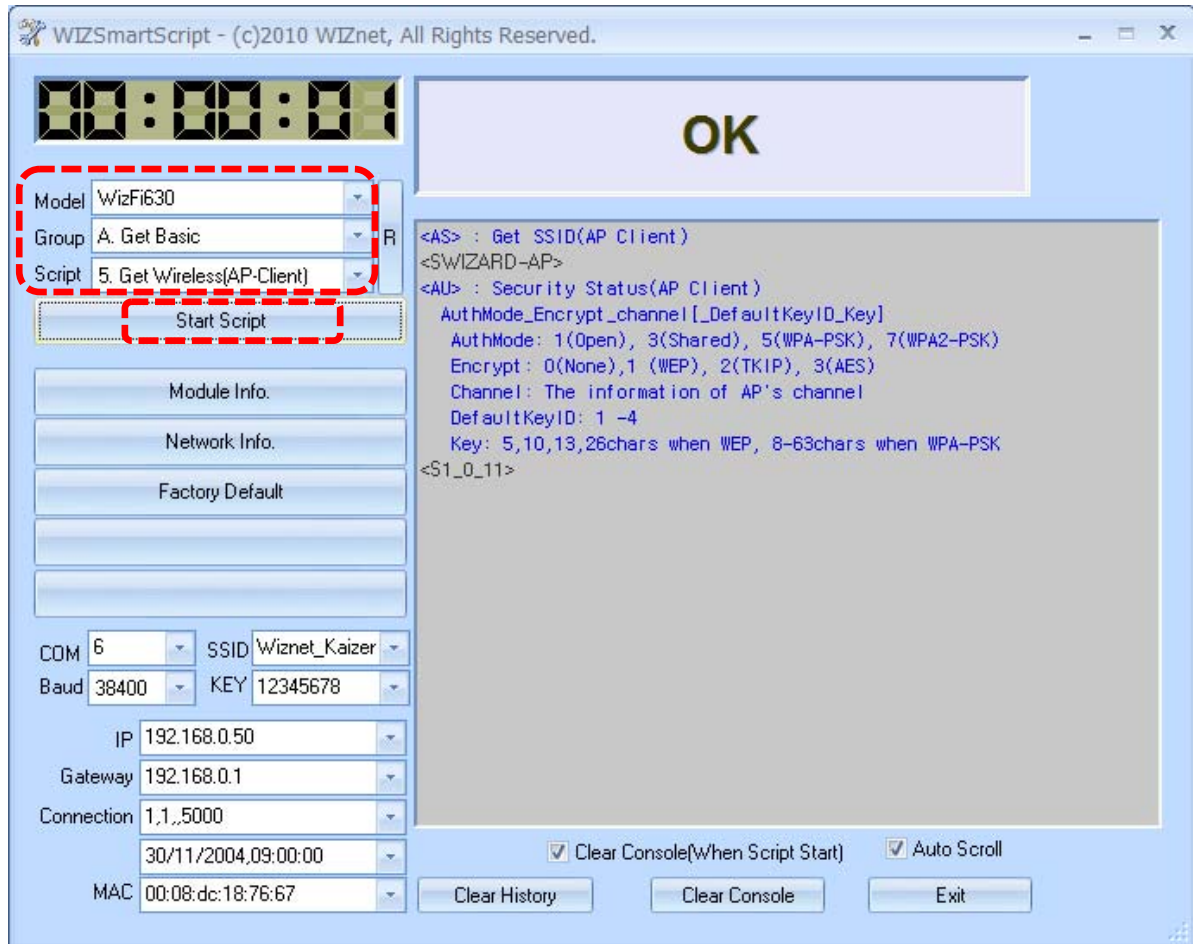
D. Get Wireless(Client) Information

- ① Select “WizFi630” for Model, “A. Get Basic” for Group and “4. Get Wireless (Client)” for Script.
- ② If you click “Start Script”, you can see the wireless(Client) information of WizFi630 as below.



E. Get Wireless(AP-Client) Information

- ① Select “WizFi630” for Model, “A. Get Basic” for Group and “5. Get Wireless (Client-AP)” for Script.
- ② If you click “Start Script”, you can see the wireless (AP-Client) information of WizFi630 as below.



F. Get Serial Information

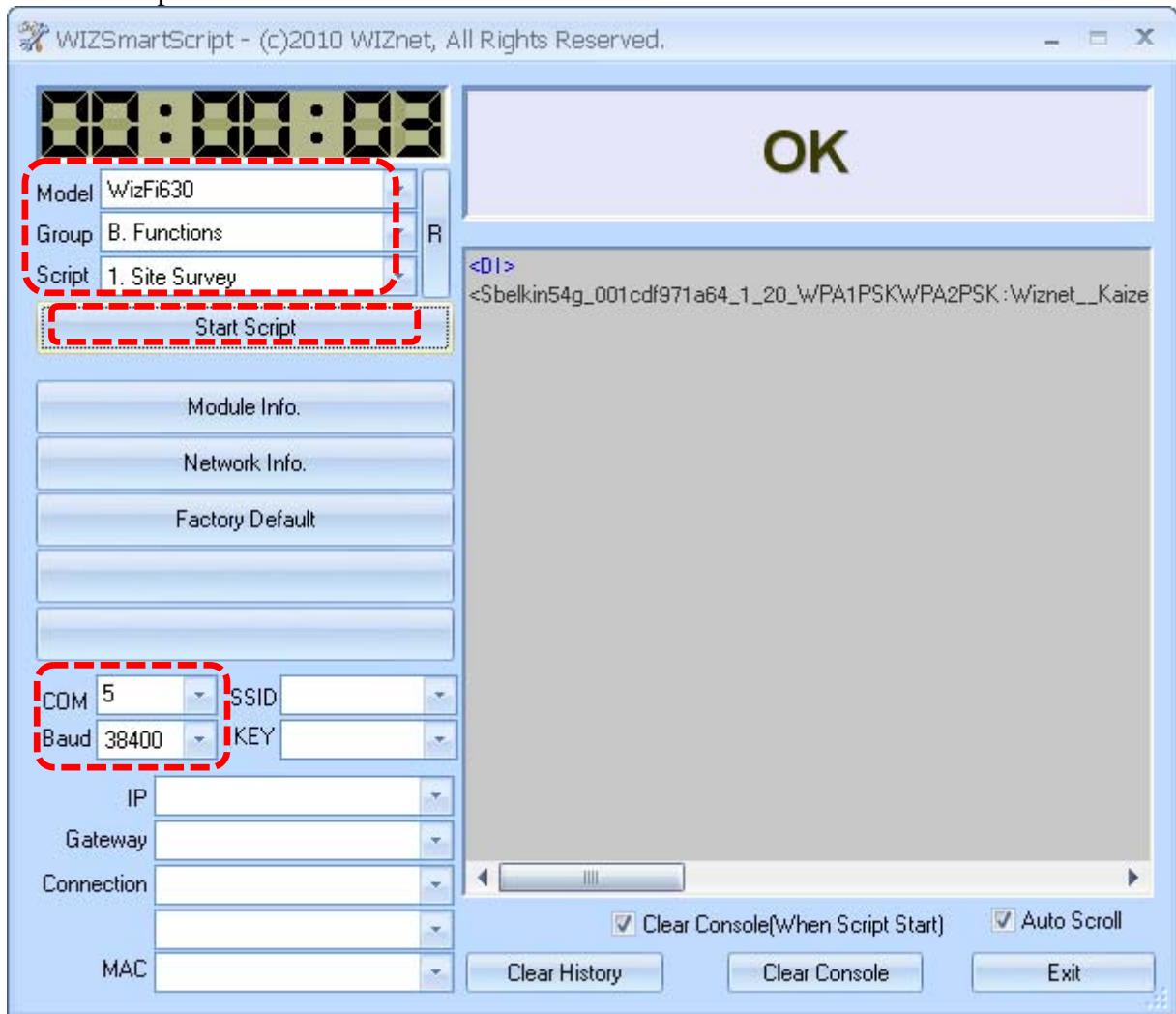
- ① Select “WizFi630” for Model, “A. Get Basic” for Group and “6. Get Serial” for Script.
- ② If you click “Start Script”, you can see the serial information of WizFi630 as below.



3.3 Functions

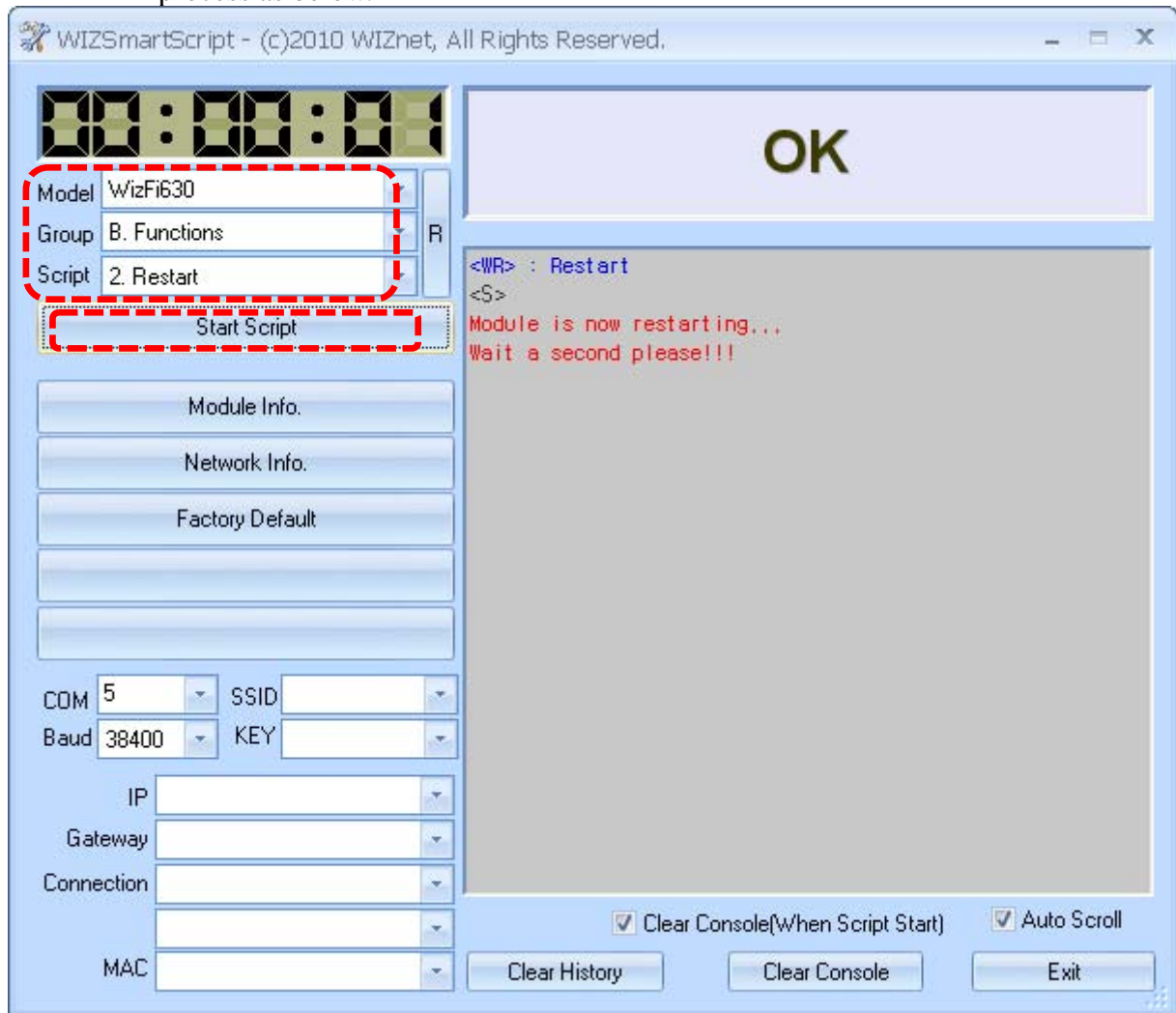
A. Site Survey(AP Scan)

- ① Input the COM port of PC and baud rate. (Default Baud Rate : 38400)
- ② Select “WizFi630” for Model, “B. Functions” for Group and “1. Site Survey” for Script.
- ③ If you click “Start Script”, WizFi630 will find the APs and you can see the process as below.



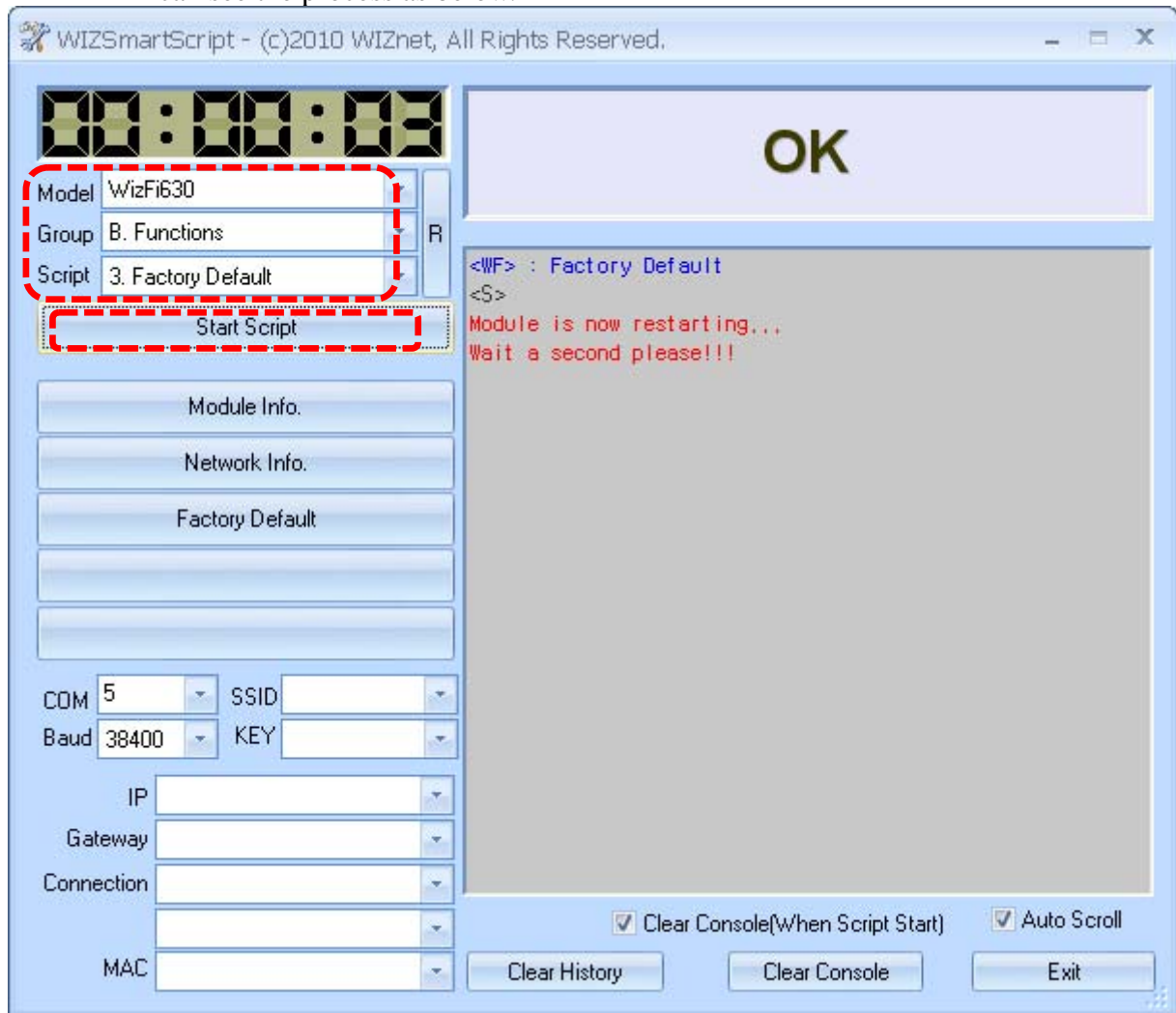
B. Restart

- ① Select “WizFi630” for Model, “B. Functions” for Group and “2. Restart” for Script.
- ② If you click “Start Script”, WizFi630 will reboot and you can see the process as below.



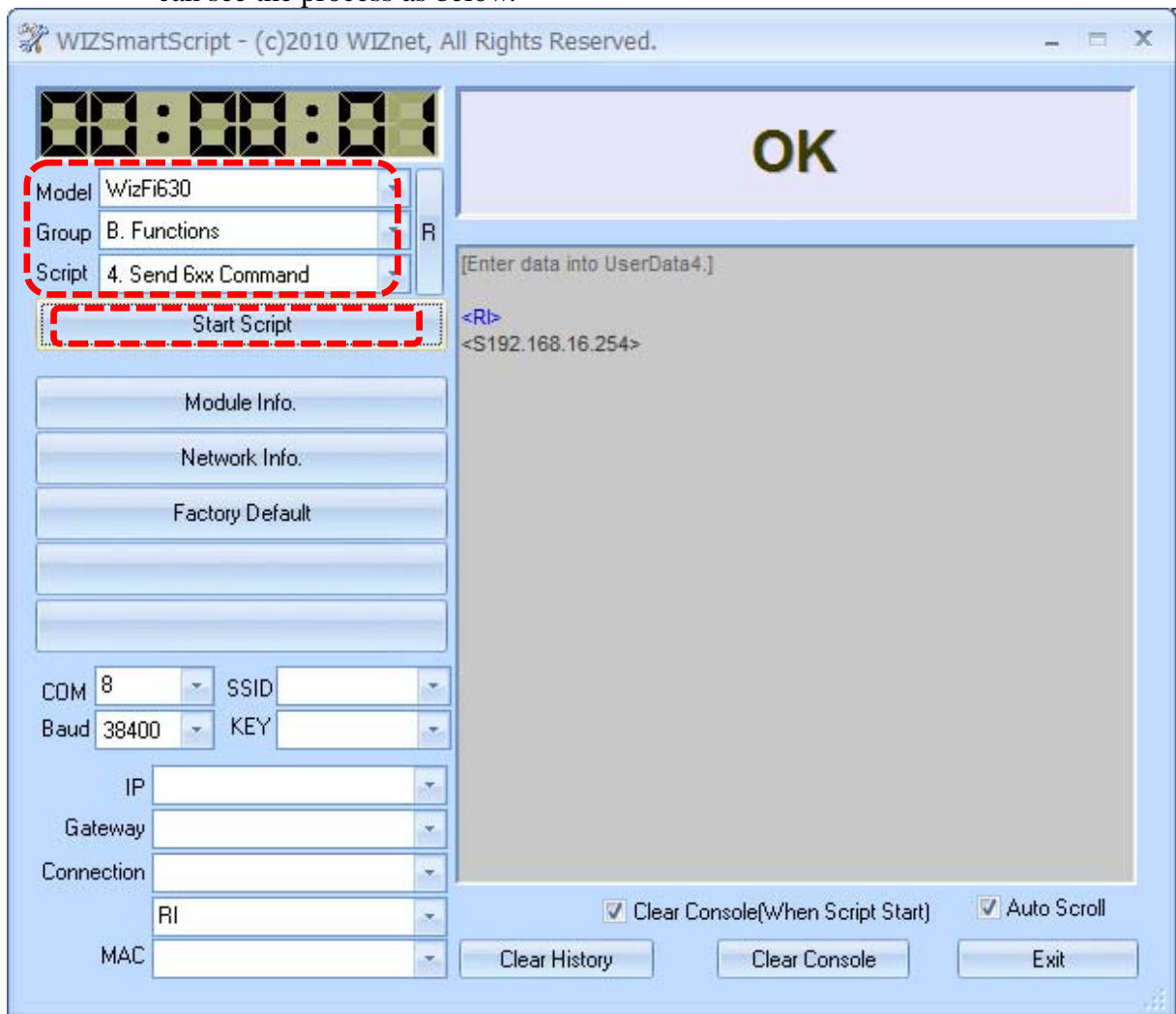
C. Factory Default

- ① Select “WizFi630” for Model, “B. Functions” for Group and “3. Factory Default” for Script.
- ② If you click “Start Script”, WizFi630 will reset to factory default and you can see the process as below.



D. Send 6xx Command

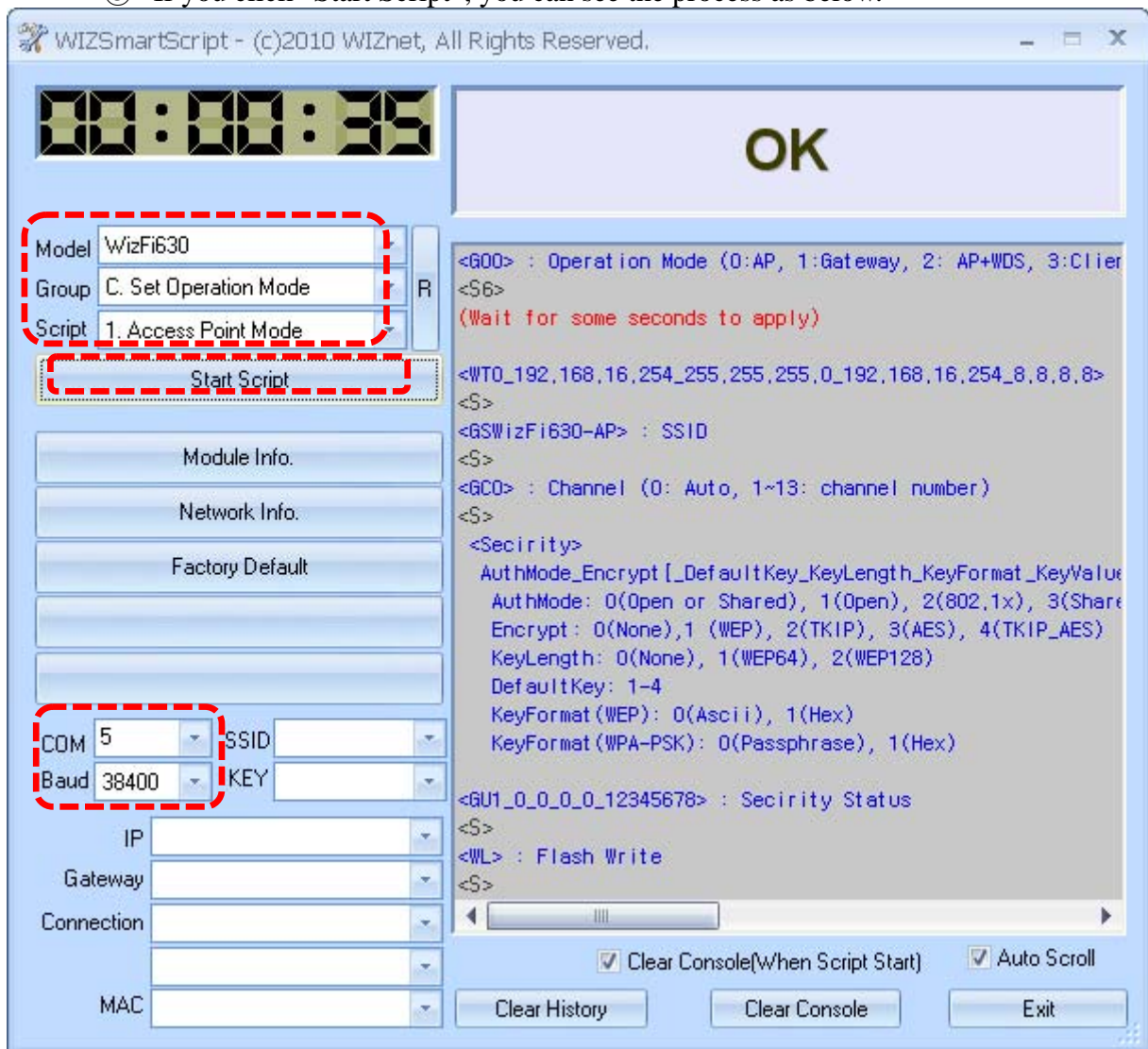
- ① Select “WizFi630” for Model, “B. Functions” for Group and “4. Send 6xx Command” for Script.
- ② Enter the valid value into the blank field.
- ③ If you click “Start Script”, WizFi630 will send the user command and you can see the process as below.



3.4 Set Operation Mode

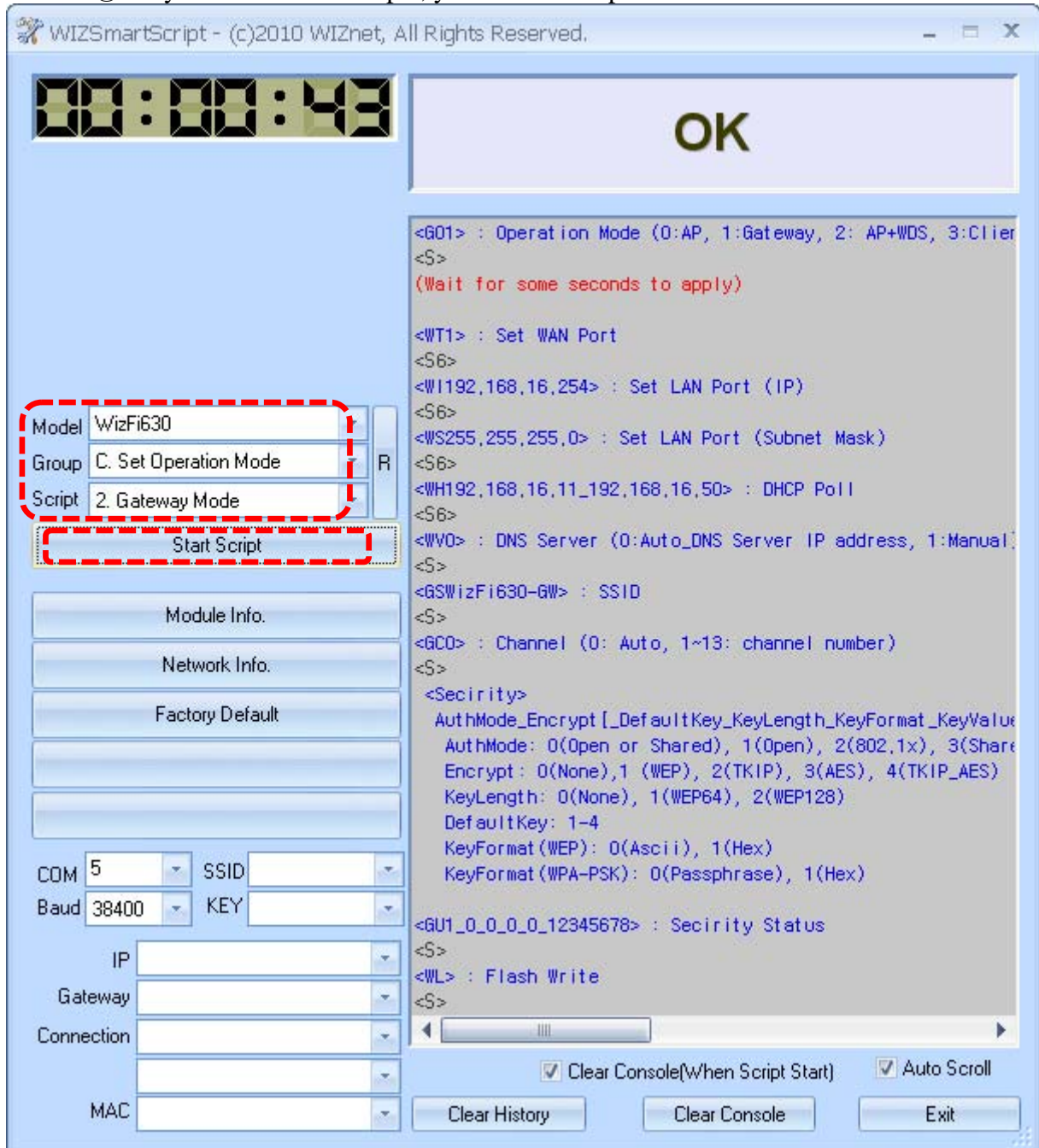
A. Access Point Mode

- ① Input the COM port of PC and baud rate. (Default Baud Rate : 38400)
- ② Select “WizFi630” for Model, “C. Set operation Mode” for Group and “1. Access Point Mode” for Script.
- ③ If you click “Start Script”, you can see the process as below.



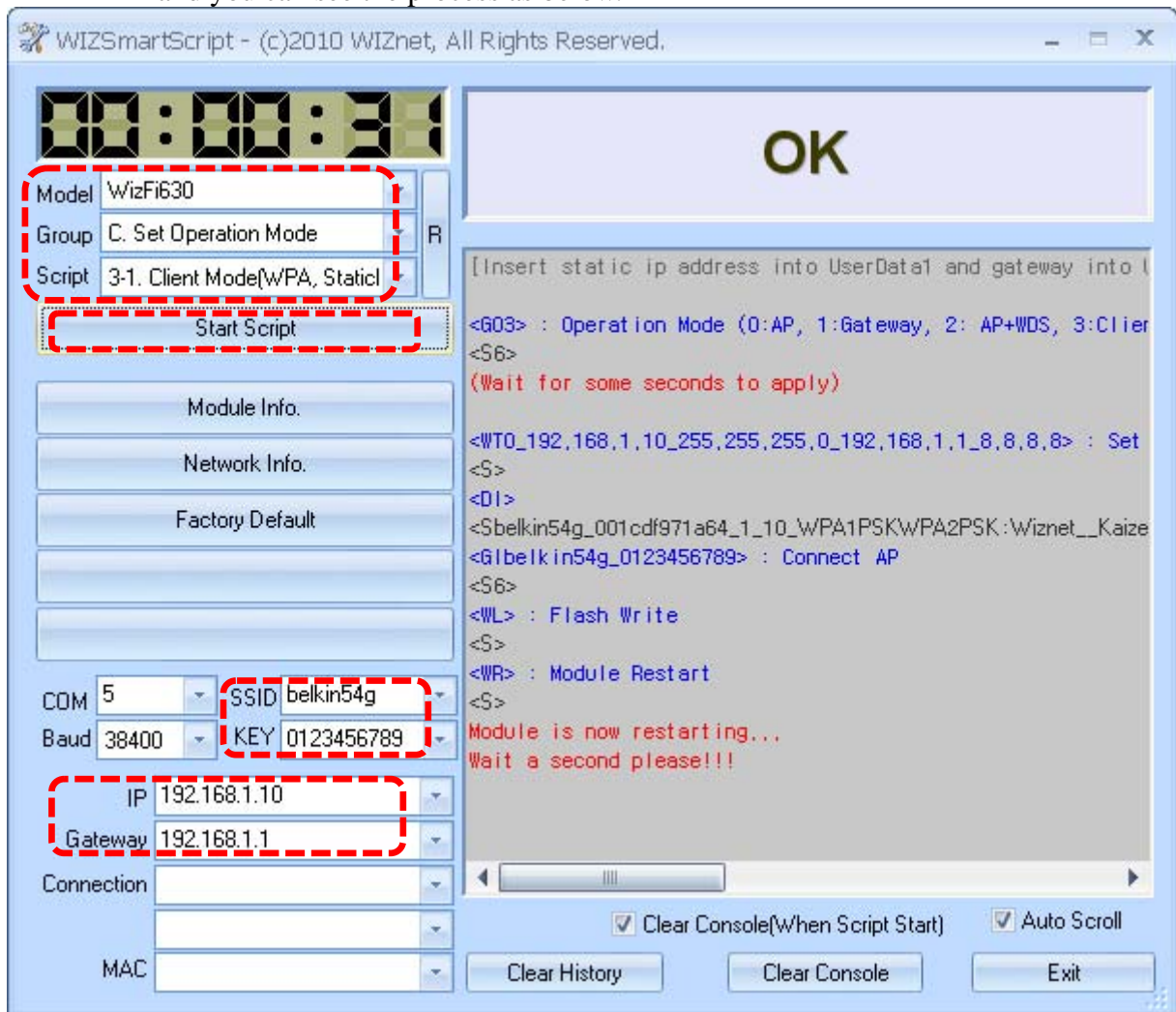
B. Gateway Mode

- ① Select “WizFi630” for Model, “C. Set operation Mode” for Group and “2. Gateway Mode” for Script.
- ② If you click “Start Script”, you can see the process as below.



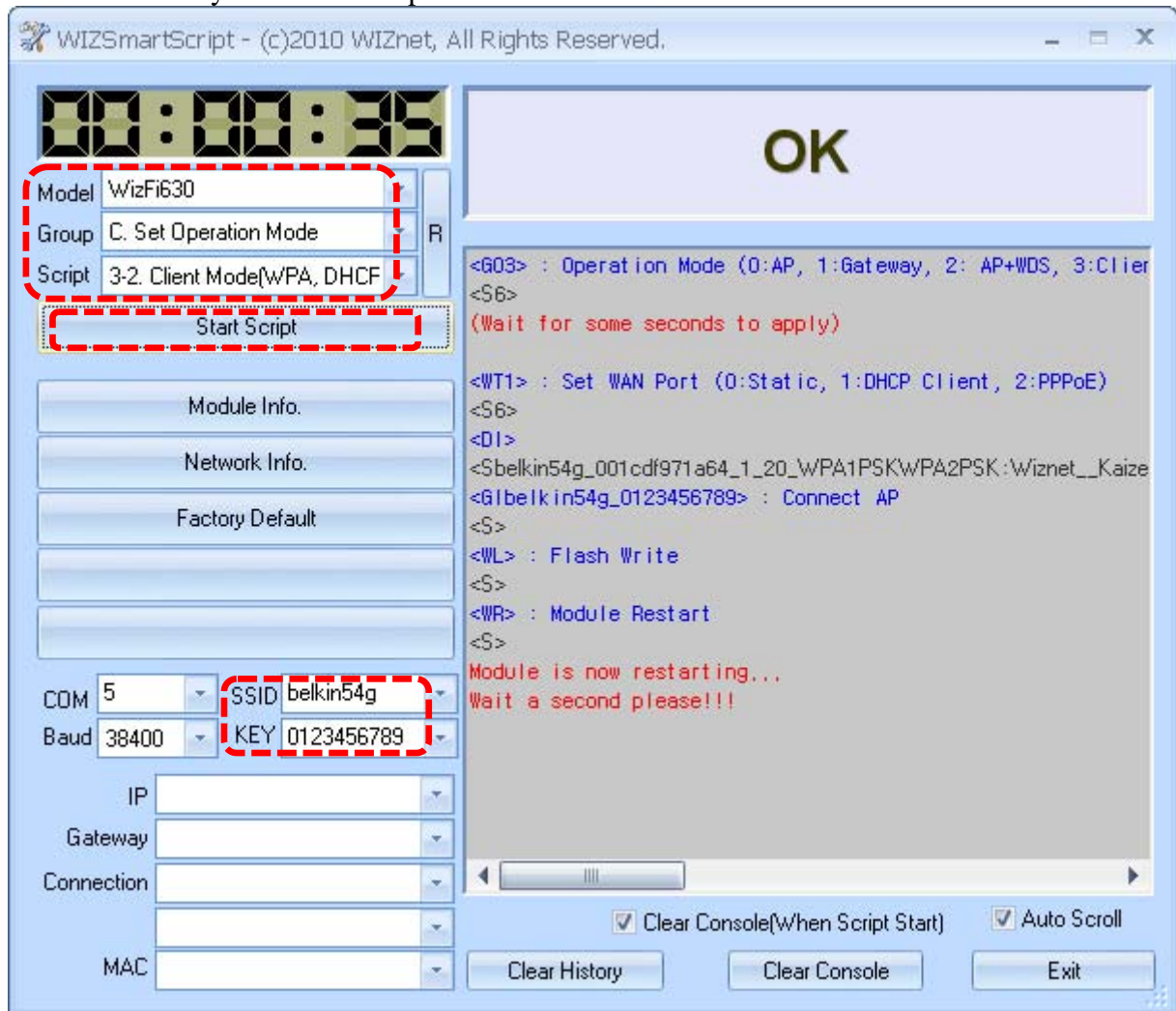
C. Client Mode(WPA, Static IP)

- ① Select “WizFi630” for Model, “C. Set operation Mode” for Group and “3. Client Mode (WPA, Static IP)” for Script.
- ② Enter the valid value into the SSID and Key field.
- ③ Enter the valid value into the IP and Gateway field.
- ④ If you click “Start Script”, WizFi630 will associate to the AP with DHCP and you can see the process as below.



D. Client Mode(WPA, DHCP)

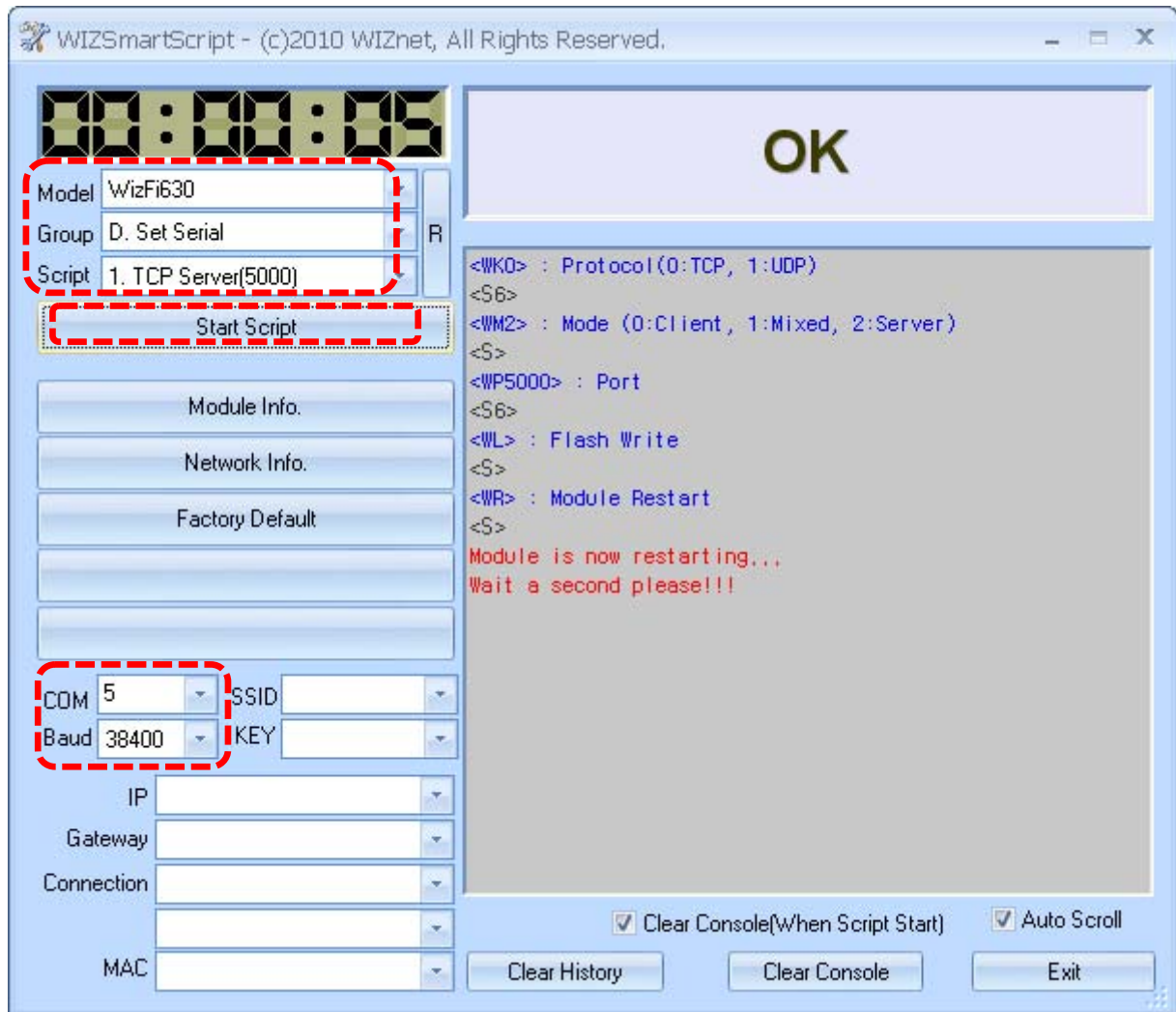
- ① Select “WizFi630” for Model, “C. Set operation Mode” for Group and “4. Client Mode(WPA, DHCP)” for Script
- ② Enter the valid value into the SSID and Key field.
- ③ If you click “Start Script”, WizFi630 will associate to the AP with static IP and you can see the process as below.



3.5 Set Serial

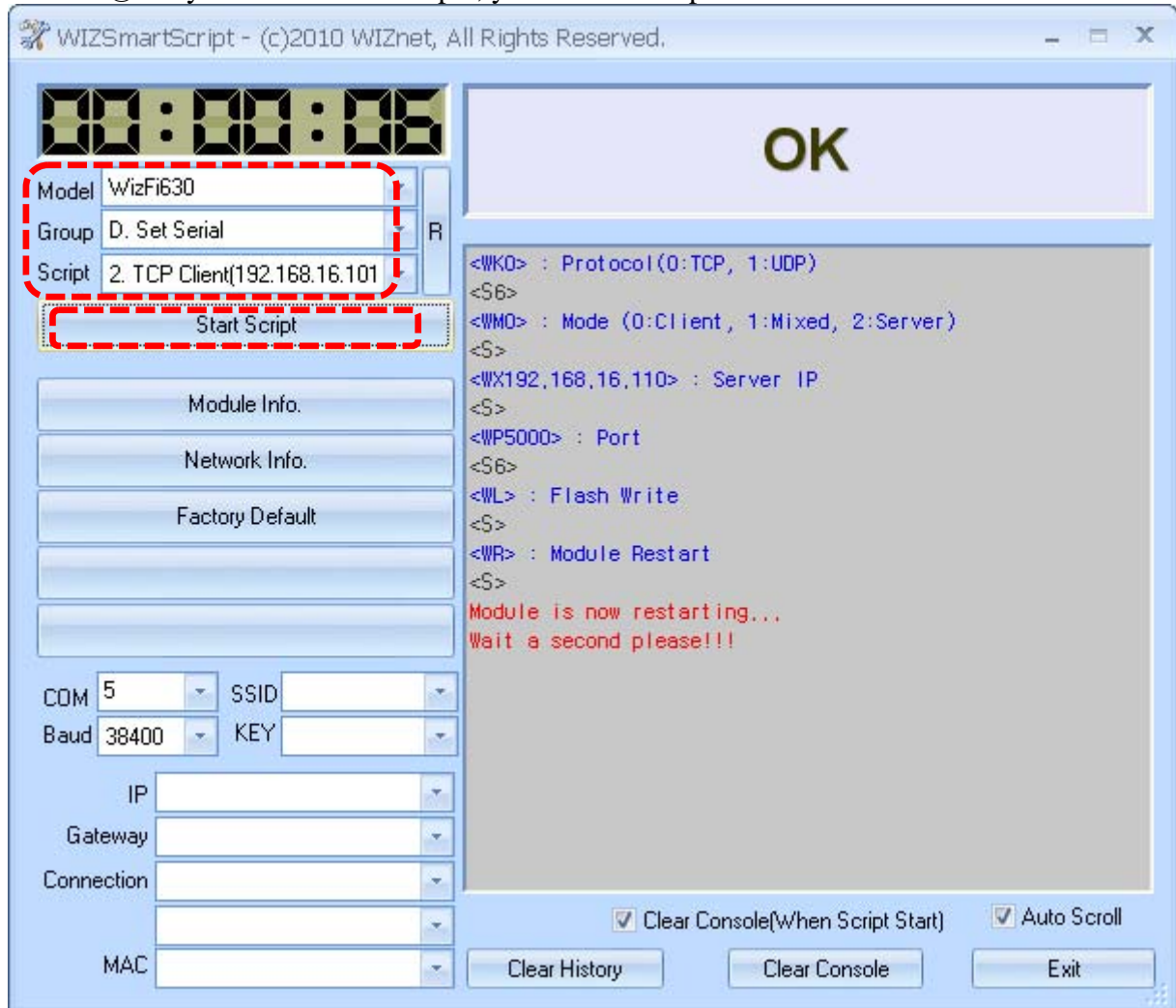
A. TCP Server(5000)

- ① Input the COM port of PC and baud rate. (Default Baud Rate : 38400)
- ② Select “WizFi630” for Model, “D. Set Serial” for Group and “1. TCP Server (5000)” for Script.
- ③ If you click “Start Script”, you can see the process as below.



B. TCP Client(192.168.16.101-5000)

- ① Select “WizFi630” for Model, “D. Set Serial” for Group and “2. TCP Client (192.168.16.101-5000)” for Script.
- ② If you click “Start Script”, you can see the process as below.



4. Serial command definitions

- E. Serial command is fully described at the file named "WizFi630 Serial Command list.xlsx" and "WizFi630 Serial Command list.pdf"

Last Modified : 2012-07-05					
Item	Contents	OP	CM D	Command Syntax	Contents
Network	Version	Get	RF	<RF>	Get Firmware Version
	MAC Address	Get	RA	<RA>	Get MAC address module
	IP Address	Get	RI	<RI>	Get IP address
		Set	WI	<WIxxx.xxx.xxx.xxx>	Change IP address
	Subnet Mask	Get	RS	<RS>	Get subnet mask
		Set	WS	<WSxxx.xxx.xxx.xxx>	Set subnet mask
	Gateway	Get	RG	<RG>	Get gateway
		Set	WG	<WGxxx.xxx.xxx.xxx>	Set gateway
	DHCP Server	Get	RD	<RD>	Get DHCP Server working status
		Set	WD	<WDx> 1:Enable 0:Disable	Set DHCP Server working status
	DHCP Start/End IP	Get	RH	<RH>	Start address, End address
		Set	WH	<WHxxx.xxxx.xxx.xxx_xxx.xxx.xxx.xxx>	
	Wireless Active Client List	Get	DL	<DL>	Return connected clients information Client/Ad-hoc Mode: Not Support
	DHCP Client List	Get	RL	<RL>	Return DHCP clients information
	DNS Server	Set	WV	<WV0> or <WV1_xxx.xxx.xxx.xxx[_xx.xx.xx.xx]> 0:Auto_DNS Server IP address 1:Manual	Set DNS server IP address
		Get	RV	<RV>	Get DNS server IIP address
	WAN Port	Get	RT	<RT>	Get WAN port IP information
		Set	WT	<WT0_xxx.xxx.xxx.xxx_xxx.xxx.xxx.xxx_xxx.xxx.xxx.xxx_xxx.xxx.xxx.xx> Static: 0_Ipaddress_Subnet_Gateway_DNS <WT1> DHCP Client: 1 <WT2_User Name_Password> PPPoE: 2_UserName_Password 0:Static, 1:DHCP Client, 2:PPPoE	Set WAN port information
	TCP Connection	Get	RC	<RC>	when protocol is TCP available (Main/Aux Port connection status)

		Get	RQ	<RQ>	when protocol is TCP available (Main Port connection status)
		Get	RY	<RY>	when protocol is TCP available (Aux Port connection status)
		Set	WC	<WC>	Close TCP connection (Main/Aux Port)
		Set	WQ	<WQ>	Close TCP connection (Main Port)
		Set	WY	<WY>	Close TCP connection (Aux Port)
	System Status	Get	QZ	<QZ>	Current System status for flash access
	NTP Server	Get	QN	<QN>	Get NTP Server information
	NTP Server	Set	ON	<ONserver>	Set NTP Server
	System Time	Get	QM	<QM>	Get current system time
Wireless	Wireless Band	Get	DB	<DB>	Get wireless band Client/Ad-hoc Mode: Not Support
		Set	GB	<GBx> 0: 11b+g, 2: 11b, 3:11g, 6: n, 9:b+g+n	Set wireless band information Client/Ad-hoc Mode: Not Support
	Operation Mode	Get	DO	<DO>	Get operation mode
		Set	GO	<GOx> 0:AP, 1:Gateway, 3:Client, 4: Ad-hoc, 5: AP-Client GW, 6: AP-Client Multi-Bridge	Change operation mode
	SSID	Get	DS	<DS>	Get SSID Client/Ad-hoc Mode: Not Support
		Set	GS	<GSxxxx~> 1~32 chars	Change SSID Client/Ad-hoc Mode: Not Support
	Channel	Get	DC	<DC>	Get Wireless operation channel Client/Ad-hoc Mode: Not Support
		Set	GC	<GCx> 0: Auto 1~13: channel number	Change wireless operation channel Client/Ad-hoc Mode: Not Support
	WDS	Get	DW	<DW>	Get WDS Client/Ad-hoc Mode: Not Support
		Set	GW	<GWx_x_xxxxxxxxxxxx_xxx~> 1:add,2:delete_ 3:disable,5:bridge,6:repeater,7:Lazy_ count_MACaddress_Comment[_MAC address_Comment_..]	Set WDS Client/Ad-hoc Mode: Not Support
	Tx Power	Get	DP	<DP>	Get Tx Power Client/Ad-hoc Mode: Not Support
		Set	GP	<GPxxx> 1-100: power(%)	Set Tx Power Client/Ad-hoc Mode: Not Support
	Data Rate	Get	DR		Get Data Rate Client/Ad-hoc Mode: Not Support

	Set	GR	<GRxx> 20MHz: 7,14.5,21.5,28.5,43.5,57.5,65,72, 40MHz: 15,30,45,60,90,120,135,150, b only: 1, 2, 5, 11 g only, b/g mode: 1, 2, 5, 6, 9, 11, 12, 18, 24, 36, 48, 54	Set Data Rate Client/Ad-hoc Mode: Not Support
Broadcast SSID	Get	DH	<DH>	Get Hidden SSID Client/Ad-hoc Mode: Not Support
	Set	GH	<GHx> 0:Enable, 1:Disable	Set Hidden SSID Client/Ad-hoc Mode: Not Support
WMM	Get	DM	<DM>	Get WMM Status Client/Ad-hoc Mode: Not Support
	Set	GM	<GMx> 1:Enable, 0:Disable	Set WMM Client/Ad-hoc Mode: Not Support
MAC Access Control	Get	DA	<DA>	Get MAC Access Control Client/Ad-hoc Mode: Not Support
	Set	GA	<GAx_x_xxxxxxxxxxxxxxxx~> 0:Disable,1:AllowListed,2:DenyListed ,3:all_delete[_1:add,2:delete_count_M AAddress]	Set MAC Access Control Client/Ad-hoc Mode: Not Support
Site Survey (Sync Command)	Get	DI	<DI>	Do the site survey and send site survey list Get Site Survey
Site Survey Start (Async Command)	Set	GQ	<GQ>	Do the site survey start command.
Site Survey List (Async Command)	Get	DQ	<DQ>	Get the current site(AP) List, This command should be worked together "GQ" command. Call "GQ" command and call DQ command after 2 second.
Connection AP	Set	GI	<ssid_key>	Set Connection AP
WPS	Get	DT	<DT>	Get WPS Status
	Set	GT	<GTx> 0:disable, 1:enable	Set WPS
Alias Name	Get	DN	<DN>	Get Alias Name
	Set	GN	<GNxxx> Maximum 29 characters	Set Alias Name
Status Checking	Get	QP	<QP>	Get Wireless Connection Status
Get Profile	Get	DF	<DF>	Get Profile Available at Client/Ad-hoc Mode

	Set Profile	Set	GF	<Sx_x_x_x_x_x> add/del_SSID_Channel_AuthMode_Encrypt_KeyId_Key add/del: 1(add), 0(delete) SSID: SSID of Profile AuthMode: 1(Open), 3(Shared), 5(WPA-PSK), 7(WPA2-PSK) Encrypt: 0(None), 1(WEP), 2(TKIP), 3(AES) KeyId: 1-4, If WPA-PSK/WPA2-PSK KeyID is "2" Key: Encryption key	Set Wi-Fi Profile Add Wi-Fi profile and make it activate Available at Client/Ad-hoc Mode
	Get SSID (AP-Client)	Get	AS	<AS>	At AP-Client Mode, Set Client side's SSID
	Set SSID (AP-Client)	Set	PS	<PSxxx> 1-32chars	At AP-Client Mode, Set Client side's SSID
	AP Connect (AP-Client)	Set	PI	<ssid_key	At AP-Client Mode, connect to AP
	Security Status (AP-Client)	Get	AU	<AU>	At AP-Client Mode, Client's Security information Channel should be same with AP's Channel.
	Security Status (AP-Client)	Set	PU	<Sx_x_x_x_x_x> AuthMode_Encrypt_Channel[DefaultKeyID_Key] Auth Mode: 1(Open), 3(Shared), 5(WPA-PSK), 7(WPA2-PSK) Encrypt: 0(None), 1(WEP), 2(TKIP), 3(AES) Channel: Channel Information of AP Default Key ID: 1-4 Key: If WEP, Char length is 5,10,13,26 If WPA-PSK, Char length is 8-63	At AP-Client Mode, change Client's Security information. Channel should be same with AP's channel
Security	Security Status	Get	DU	<DU>	Get Security Status Client/Ad-hoc Mode: Not Support
	Security Control	Set	GU	<GUx_x_x_x_x_x_x_x> AuthMode_Encrypt[DefaultKey_KeyLength_KeyFormat_KeyValue_radiusPasswd_radiusIP_radiusPort] Auth Mode: 1(Open), 2(802.1x), 3(Shared), 4(WPA), 5(WPA-PSK), 6(WPA2), 7(WPA2-PSK), 8(WEPAUTO), 9(WPA1WPA2), a(WPAPSKWPA2PSK) Encrypt: 0(None), 1(WEP), 2(TKIP), 3(AES), 4(TKIP_AES) Key Length: 0(None), 1(WEP64), 2(WEP128) Default Key: 1-4 Key Format(WEP): 0(ASCII), 1(Hex) Key Format(WPA-PSK): 0(Passphrase), 1(Hex)	Change Security. It takes time min : 4 , mac 10 seconds Client/Ad-hoc Mode: Not Support

Serial	Protocol	Get	RK	<RK>	Get Protocol
		Set	WK	<WKx> TCP_0, UDP_1	Set Protocol
	Mode	Get	RM	<RM>	Get Mode
		Set	WM	<WMx> 0:Client, 1:Mixed, 2:Server	Set Mode
	Server IP	Get	RX	<RX>	Get Server IP
		Set	WX	<WXXX.xxx.xxx.xxx>	Set Server IP
	Port	Get	RP	<RP>	Get Port
		Set	WP	<WPx> 0~65535	Set Port
	Baudrate_ DataBit_Pa rity_Flow_ Stopbits	Get	RB	<RB>	Get Serial Setting
		Set	WB	<WBxxxx> [Baudrate]1: 115200, 2: 57600, 3: 38400, 4: 19200, 5: 9600, 6: 4800, 7: 2400, 8: 1200, 0: 230400, 9: 460800, a: 921600 [data byte]7: 7bit, 8: 8bit [parity] 0: no parity, 1: Odd, 2: Even [Flow] 0: no, 1: Xon/Xoff, 2: RTS/CTS [Stopbits]: 1: 1stop, 2: 2stop	Set Serial Setting
	Domain Name	Get	RW	<RW>	Get Domain Name
		Set	WW	<Sxxxx> Max 64 characters	Set Domain Name
	Time	Get	QT	<QT>	Get Time
		Set	OT	<OTxxxx> 0~65535	Set Time
	Size	Get	QS	<QS>	Get Size
		Set	OS	<OSxxx> 0~255	Set Size
	Char	Get	QC	<QC>	Get Delimiter
		Set	OC	<OCxx> 00~ff	Set Delimiter
	Inactivity Time	Get	QI	<QI>	Get Inactivity Time
		Set	OI	<OIxx> 00~60	Set Inactivity Time
	TCP Connection Option	Get	QU	<QU>	Get TCP Connection Option
		Set	OU	<OU> <OU> 0: TCP Client Mode, Serial to LAN auto connection 1: TCP Client Mode, Serial to LAN connection made in serial date in	Set TCP Connection Option
	Main Port	Get	RO	<RO>	Get Main Port Status
		Set	WO	<WOx_x_x_a.b.c.d_x> Enable[_Protocol_Mode_ServerIP or Domain_ServerPort] Enable: 0(Disable), 1(Enable), Disable (In disable, other data is ignored Protocol: 0(UDP), 1(TCP) Mode: 0(Server), 1(Client), 2(Mixed) Server IP: a.b.c.d	Set Main Port Status

			Domain: xxx.yyy.zzz Server Port: 0-65535	
Aux Port	Get	RU	<RU>	Get Aux Port Status
	Set	WU	<WUx_x_x_a.b.c.d_x> Enable[_Protocol_Mode_ServerIP or Domain_ServerPort] Enable: 0(Disable), 1(Enable) (In Disable, other data is ignored) Protocol: 0(UDP), 1(TCP) Mode: 0(Server), 1(Client) Server IP: a.b.c.d Domain: xxx.yyy.zzz Server Port: 0-65535	Set Aux Port Status
Data Flow	Get	RE	<RE>	CIMOS specific commands
	Set	WE	<WEx> 0: send incoming serial data to LAN main and aux port 1: send incoming serial data to LAN main 2: send incoming serial data to LAN Aux	CIMOS specific commands
Get Insert Tag	Get	RZ	<RZ>	
Insert Tag	Set	WZ	<WZx_xxx_xxx> enable(0-1)[_main-delimiter1_aux- delimiter] 0: disable(default) 1: enable delimiter mac 16 characters 16 chars	Set serial data tag for main and aux
Client Mode	Set	CC	<CCxxx_xx> IP-address_port, IP-address: a.b.c.d, port: tcp port(0-65535)	set serial main port connection for specific client only
Connection Status	Get	CS	<CS>	get serial main port connection for specific client only same with <RC> but response is different
Connection End	Set	CQ	<CQx> (0-65535)	change serial main as TCP server mode. For specific client only
Data Mode	Set	AT	<ATDT>	change serial server as Data(Normal) Mode
Command Mode	Set	+++	<+++>	change serial server as Command Mode
Mode Status	Get	AT	<ATDT?>	get current serial server mode
Escape Mode	Get	QX	<QX>	get usage of Escape Sequence
Escape Mode	Set	OX	<OXx>	Set mode switch "use_hw_switch_pin". Serial mode switch can be control via GPIO if 0, only <ATDT> and <xxx> command is available for mode switch

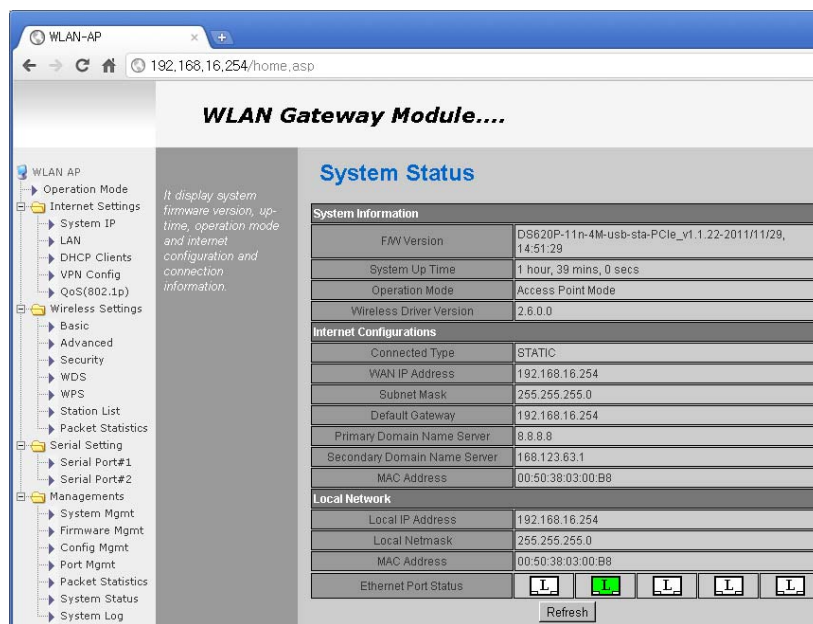
	Flash Write	Set	WL	<WL>	Save committed command to module's flash. Saved data is available after rebooting.
Others	Factory Default	Set	WF	<WF>	Set Factory Default
	Restart	Set	WR	<WR>	Set System Restart

Return code	S	<S> or <Sxx ...>	Command success
	F	<F>	command operation failed
	0	<0>	Command failed because of no '<'
	1	<1>	No supported command is inputted
	2	<2>	Command parameter is mismatch
	3	<3>	Command failed because of no '>'
	4	<4>	Not supported command in current running mode
	5	<5>	No more job is requested In WDS : requested to add more than 4 In Profile: requested to add more than 2 In ACL :requested to add more than 16
	6	<6>	Already configuration with same data

5. Accessing module via Web Browser

F. All of control is done via web

- ① Connect your PC to WizFi630 EVB via LAN or Wi-Fi
- ② Set your PC IP address Auto
- ③ Run Web Browser
- ④ Input `http://192.168.16.254`
- ⑤ User Account : admin / User Passwd : admin
- ⑥ Following is the web access picture



6. More information

- Website : www.wiznet.co.kr
- WizFi630-User Manual (software user manual)
- WizFi630 Data Sheet
- WizFi630 Series Application Notes
- WizFi630 Serial Command Definitions