

REV	DESCRIPTION	APPD BY	DATE

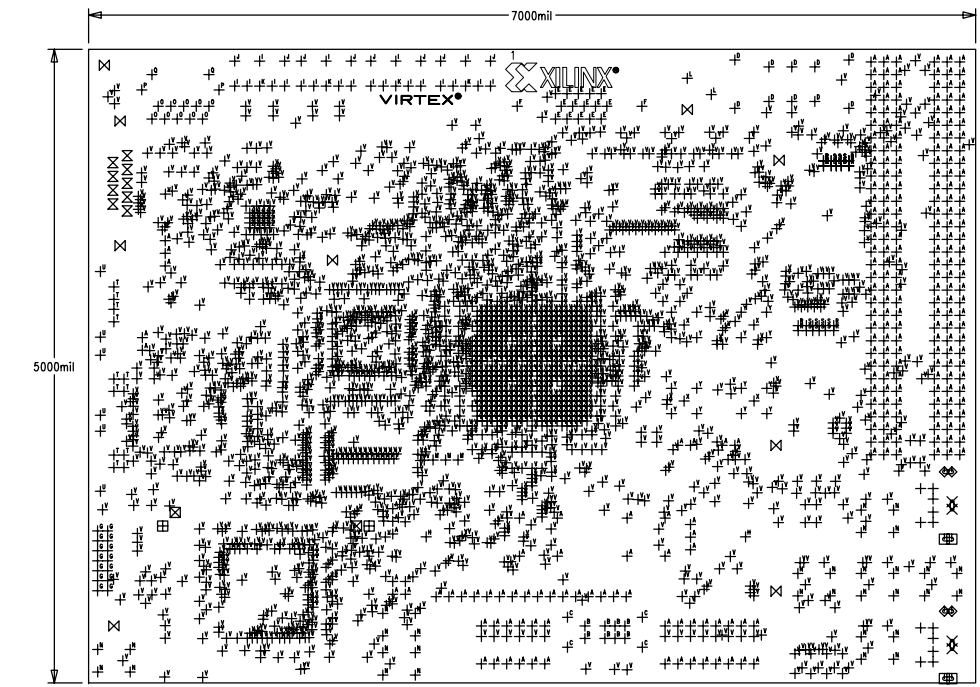
**NOTES: UNLESS OTHERWISE SPECIFIED.**

1. APPLICABLE STANDARDS/SPECIFICATIONS:  
FABRICATE BOARD PER IPC-A-600D STANDARD.
2. PRIMARY SIDE SHOWN.
3. MATERIAL: .093 THK. FR-4, NATURAL GREEN, UL94V-0 COMPLIANT,  
START 1/2 OZ COPPER ALL LAYERS.
4. ALL HOLES TO BE PLATED THRU. PLATING IN HOLES TO BE .001 MIN. THICKNESS.  
HOLE SIZES ARE AFTER PLATING. HOLE TOLERANCE +/--.003 EXCEPT VIAS.  
VIA TOLERANCE +.000/-100% OF HOLE DIAMETER.
5. PLATING: GOLD IMMERSION.
6. USE ARTMASTER # ML401
7. FINISHED THICKNESS TO BE +/--.005 OR 5%, WHICHEVER IS GREATER.
8. SILKSCREEN TOP & BOTTOM SIDE WITH WHITE NON-CONDUCTIVE EPOXY INK.
9. FABRICATE PER DIMENSIONS SHOWN. BOARD DIMENSION  
TOLERANCE'S .XX: +/--.01 .XXX: +/--.003.
10. BREAK ALL SHARP EDGES.
11. CONTROL IMPEDANCE SEE CHART BELOW
12. REMOVE ALL UNUSED PADS ON INTERNAL TRACE LAYERS. LAYERS 5, 6, 8, 9, 11 & 12.

SIZE	QTY	SYM	PLTD	TOL
35.43	12	+	YES	+/-0.0
27.56 x 86.61	2	X	NO	+/-0.0
27.56 x 86.61	2	□	YES	+/-0.0
27.56 x 86.61	2	◇	YES	+/-0.0
45	9	⊗	YES	+/-0.0
125	9	⊗	YES	+/-0.0
37	263	†	YES	+/-0.0
35.43	8	†	YES	+/-0.0
47.24	4	†	YES	+/-0.0
65	10	†	YES	+/-0.0
42.91	15	†	YES	+/-0.0
120.08	2	†	YES	+/-0.0
32	14	†	YES	+/-0.0
157.48	2	†	YES	+/-0.0
51.18	20	†	YES	+/-0.0
59.06	8	†	NO	+/-0.0
59.06	4	†	YES	+/-0.0
105	2	†	YES	+/-0.0
35	3	†	YES	+/-0.0
39.37	32	†	YES	+/-0.0
35.04	10	†	YES	+/-0.0
62.99	2	†	YES	+/-0.0
127.95	2	†	YES	+/-0.0
18	12	†	YES	+/-0.0
13	20	†	YES	+/-0.0
36.22	12	†	YES	+/-0.0
90.55	6	†	YES	+/-0.0
12	2722	†	YES	+/-0.0
40	2	†	YES	+/-0.0
57	4	†	YES	+/-0.0
60	16	†	YES	+/-0.0
10	20	†	YES	+/-0.0
92.91	2	⊞	YES	+/-0.0
61.81	2	⊗	NO	+/-0.0

LAYERS STACK-UP OVER ALL THICKNESS 0.093 +/- 5%										
Lyr#	Type	Gerber file name	Dielectric	Copper Weight	Trace width (INCHES)	Ohms	Trace width (INCHES)	Separation (INCHES)	Ohms	Comments
1	Top Side	COMP SIDE.PHO		1/2 OZ	0.005	50+/-5	0.004	0.005	100+/-5	PRE-PREG
2	VCC PLANE 1	PWR2.PHO	0.005"	1/2 OZ						CORE
3	INNER TRACE 1	INTRC3.PHO	0.005"	1/2 OZ	0.005	50+/-5	0.004	0.007	100+/-5	PRE-PREG
4	GND PLANE 1	GND4.PHO	0.005"	1/2 OZ						CORE
5	INNER TRACE 2	INTRC5.PHO	0.005"	1/2 OZ	0.005	50+/-5	0.004	0.007	100+/-5	PRE-PREG
6	VCC PLANE 2	PWR6.PHO	0.005"	1/2 OZ						CORE
7	GND PLANE 2	GND7.PHO	0.005"	1/2 OZ						PRE-PREG
8	INNER TRACE 3	INTRC8.PHO	0.005"	1/2 OZ	0.005	50+/-5	0.004	0.007	100+/-5	CORE
9	PWR PLANE 3	PWR9.PHO	0.005"	1/2 OZ						PRE-PREG
10	BOTTOM SIDE	SLDRSIDE.PHO	0.005"	1/2 OZ	0.005	50+/-5				

NOTES: FINISHED COPPER THICKNESS ON OUTER LAYERS WILL BE .002" AFTER PLATING.



FABRICATION / DRILL DRAWING					
APPROVALS	DATE	UNLESS OTHERWISE SPECIFIED: ALL DIMS IN INCHES, & INCLUDE CHEM. APPLIED/PLATED FINISH. DO NOT SCALE DRAWING. REMOVE BURRS & SHARP EDGES.		COMPANY: <b>XILINX</b> 2100 LOGIC DRIVE SAN JOSE, CA 95124	
DESIGN Sergio S.	07-06-04	TOL'S: .XX: .XXX: ANGLES:	SURFACES ✓	TITLE: ML401 PCB	
CHECKED		MATL'S		SIZE: C	CORP. NO. PCB P/N: 128XXXX
APPR		FINISH		REV: A	
				SCALE: N/A	SHEET 1 OF 1